

Pro Audio System



Product Catalog V.2024/2025

AEX System Professional Audio Solution

High-quality audio redefined. Elevate your experience to the next level with precision and unparalleled sound. Welcome to a new standard in audio excellence.



Table of Content



Wireless Microphone

MX Series Wireless Microphone System	7
MX 02-H	7
MX 04-H	7
MX 08-H	7
MX 02-B	7
MX 04-B	7
MX 08-B	7
MX 02-L	7
MX 04-L	7
MX 08-L	7
MX 02-D	7
MX 04-D	7
MX 08-D	7
MQ Series True Diversity Wireless Microphone System	14
MQ 01-H	14
MQ 01-B	14
AN 01 Advanced Multi-Channel Antenna System	16
AB 01 Horizontal Bracket	16
AB 02 Vertical Bracket	16
ANF 01 Antenna Fin	16

Conference System

CS 300M Conference System Central Unit with Camera Tracking and Voting	19
CS 301C Chairman Unit	19
CS 301D Delegate Unit	19
CS 200M Conference System Central Unit with Camera Tracking	21
CS 201C Chairman Unit	21
CS 201D Delegate Unit	21
CS 202C Chairman Unit	21
CS 202D Delegate Unit	21
CS 100M Conference System Central Unit	23
CS 101C Chairman Unit	23
CS 101D Delegate Unit	23
CS 102C Chairman Unit	23
CS 102D Delegate Unit	23
CS 700M Wireless Conference System Central Unit	25
CS 701C Wireless Chairman Unit	25
CS 701D Wireless Delegate Unit	25

CS 702C Wireless Chairman Unit.....	25
CS 702D Wireless Delegate Unit.....	25
CS 900M Wired and Wireless Conference System Central Unit with Camera Tracking.....	27
CS 901C Wireless Chairman Unit.....	27
CS 901D Wireless Delegate Unit.....	27
CSC 01 Conference System Camera.....	29
CSC 02 Wired Conference System Expander.....	31
PS 801 Conference System microphone Charger.....	31

Audio Mixing Console

Bobcat series.....	33
M 08A Bobcat Series 8-Channel Mixer.....	33
M 12A Bobcat Series 12-Channel Mixer.....	33
M 16A Bobcat Series 16-Channel Mixer.....	33
M 24A Bobcat Series 24-Channel Mixer.....	33
Lynx series.....	35
M 08AG Lynx Series 8-Channel Mixer, 2 Sub-Group.....	35
M 12AG Lynx Series 12-Channel Mixer, 2 Sub-Group.....	35
M 16AG Lynx Series 16-Channel Mixer, 2 Sub-Group.....	35
M 24AG Lynx Series 24-Channel Mixer, 2 Sub-Group.....	35

Digital Audio Mixing Console

MM 86 Maxx Digital Mixer.....	39
Leopard series.....	40
M 16D Leopard Series 16-Channel Digital Mixer.....	40
M 24D Leopard Series 24-Channel Digital Mixer.....	40
M 32D Leopard Series 32-Channel Digital Mixer.....	40
Jaguar series.....	44
M 20DS Jaguar Series 20-Channel Digital Mixer.....	44
M 24DS Jaguar Series 24-Channel Digital Mixer.....	44
M 32DS Jaguar Series 32-Channel Digital Mixer.....	44

DSP / Matrix Processor

DSP 01 Digital Effect Processor.....	49
DSP 02 Digital Effect Processor.....	50
EQ 231 Advanced Analog 31-Band Dual Channel Equalizer.....	51
EQ 131 Advanced Digital 31-Band Dual Channel Equalizer.....	51
DR 08 Advanced 8-Channel Audio Processor.....	52
DR 16 Advanced 16-Channel Audio Processor.....	52
DMX 88 DSP Matrix 8 Input 8 Output.....	53
DMX 1616 DSP Matrix 16 Input 16 Output.....	53
DMX 88D DSP Matrix 8 Input 8 Output DANTE.....	54
DMX 1616D DSP Matrix 16 Input 16 Output DANTE.....	54
DMX 3232D DSP Matrix 32 Input 32 Output DANTE.....	55
DMX 01CP Advanced Control Wall Panel.....	56
DMX 02CP Interactive Touch Wall Controller.....	56
DMX 03CP Smart Multi-Device Wall Manager.....	57
DMX 04CP Bluetooth Wall Controller.....	57
SMS 24 Loudspeaker Management System.....	58
SMS 36 Loudspeaker Management System.....	58
SMS 48 Loudspeaker Management System.....	58
SMS 36S Enhanced Loudspeaker Management System.....	60
SMS 48S Enhanced Loudspeaker Management System.....	60
AFS 0201 Advanced 2-channel Feedback Destroyer.....	61
AFS 0202 2-channel Feedback Destroyer.....	62
AFS 0802 8-channel Feedback Destroyer.....	63

Premium Audio Power Amplifier

LA 101 2 x 200W Premium Audio Power Amplifier.....	65
LA 102 2 x 400W Premium Audio Power Amplifier.....	65
LA 103 2 x 600W Premium Audio Power Amplifier.....	65
LA 104 2 x 800W Premium Audio Power Amplifier.....	65
LA 105 2 x 1300W Premium Audio Power Amplifier.....	65
LA 106 2 x 1600W Premium Audio Power Amplifier.....	65

Digital Power Amplifier

PD 1060 Digital Power Amplifier - Compact Range	69
PD 1120 Digital Power Amplifier - Compact Range	69
PD 1160 Digital Power Amplifier - Compact Range	69
PD 1230 Digital Power Amplifier - Compact Range	69
PD 1260 Digital Power Amplifier - Compact Range	69
PD 1415 Digital Power Amplifier - Compact Range	69
PD 1430 Digital Power Amplifier - Compact Range	69
LD 101 2 x 300W Digital Power Amplifier	71
LD 102 2 x 500W Digital Power Amplifier	71
LD 103 2 x 800W Digital Power Amplifier	71
LD 201 4 x 300W Digital Amplifier	72
LD 202 4 x 500W Digital Amplifier	72
LD 203 4 x 800W Digital Amplifier	72
DA 8842 4 x 200W DSP Matrix Amplifier	73
DA 8844 4 x 400W DSP Matrix Amplifier	73
DA 8846 4 x 600W DSP Matrix Amplifier	73
DA 8848 4 x 800W DSP Matrix Amplifier	73

Power Sequencer

PSQ 08 Power Sequencer	77
--------------------------------	----

Passive SR Speakers

D 8 8" Dynamo Series	79
D 10 10" Dynamo Series	79
D 12 12" Dynamo Series	79
D 15 15" Dynamo Series	79
S 8 8" Symphony Series	80
S 10 10" Symphony Series	80
S 12 12" Symphony Series	80
S 15 15" Symphony Series	80
W 8 8" TimberVox Series	81
W 10 10" TimberVox Series	81
W 12 12" TimberVox Series	81
W 15 15" TimberVox Series	81

Passive Sub-Woofers

HS 10 10" Sub-woofer	85
HS 12 12" Sub-woofer	85
HS 15 15" Sub-woofer	86
HS 18 18" Sub-woofer	86

Powered SR Speakers

D 12A 12" Dynamo Series Powered SR Speaker	89
D 15A 15" Dynamo Series Powered SR Speaker	89
S 12A 12" Symphony Series Powered SR Speaker	90
S 15A 15" Symphony Series Powered SR Speaker	90

Powered Sub-Woofers

SS 15 15" Powered Sub-woofer	93
SS 18 18" Powered Sub-woofer	93

Line Array Speaker

BL 5 Line Array Speaker System	95
JL 6 6" J-shape Line Array Speaker System	97
JL 8 8" J-shape Line Array Speaker System	97
JL 10 10" J-shape Line Array Speaker System	97

Monitor Speaker

MS 110 10" Monitor Speaker	103
MS 112 12" Monitor Speaker	103

Column Array Speaker

SL 42 Premium Slim Line Array Speaker	105
SL 92 Premium Slim Line Array Speaker	105

SL 122 Premium Slim Line Array Speaker	105
SL 162 Premium Slim Line Array Speaker	105
SLW 43 3" Weatherproof Column Array Speaker	106
SLW 83 3" Weatherproof Column Array Speaker	106
VA 204 Premium Column Speaker	108
VA 404 Premium Column Speaker.....	108
VA 604 Premium Column Speaker.....	108
VA 804 Premium Column Speaker.....	108
VA 204-L Premium Column Speaker	108
VA 404-L Premium Column Speaker.....	108
VA 604-L Premium Column Speaker.....	108
VA 804-L Premium Column Speaker.....	108
Steerable Column Array Speaker	
AL 803 3" Steerable Column Array Speaker	113
AL 804 4" Steerable Column Array Speaker	113
Powered Column Array Loudspeaker	
X 8 HF Array with Sub-woofer	117
X 10 HF Array with Sub-woofer	117
X 10-2 HF Array with Sub-woofer.....	118
X 12 HF Array with Sub-woofer.....	118
X 15 HF Array with Sub-woofer	118
Portable Battery/AC Powered Speaker System	
CS 10 Portable Party Speaker.....	121
MS 12W Portable Battery Speaker	123
JS 100 Portable Musicbox Speaker.....	124
Ceiling Speakers	
HC 631 Music Ceiling Speaker	127
HC 631E Music Ceiling Speaker	127
HC 831 Music Ceiling Speaker	128
HC 831E Music Ceiling Speaker	128
HC 851 Music Ceiling Speaker	129
HC 851E Music Ceiling Speaker.....	129
CX 530-BT 30W Bluetooth Ceiling Coaxial Speaker	130
CX 530 Ceiling Coaxial Speaker (Slave)	130
HiFi In-Ceiling/In-Wall Speaker	
HC 522 2-Way HiFi In-Ceiling Speaker	133
HC 523 2-Way HiFi In-Wall Speaker	133
HC 524 Double 2-Way HiFi In-Wall Speaker	133
HC 632 2-Way HiFi In-Ceiling Speaker.....	134
HC 633 2-Way HiFi In-Wall Speaker	134
HC 852 2-Way HiFi In-Ceiling Speaker.....	135
HC 853 2-Way HiFi In-Wall Speaker.....	135
Foreground Music Speakers	
HB 105B 5" Single Point Source Coaxial Speaker	137
HB 105W 5" Single Point Source Coaxial Speaker	137
FG 421W 2-Way Foreground Music Speaker.....	138
FG 531W 2-Way Foreground Music Speaker	138
FG 641W 2-Way Foreground Music Speaker	138
PRIME series	
HD 420W Premium AV Surface-Mounted Loudspeaker	141
HD 530W Premium AV Surface-Mounted Loudspeaker	141
HD 640W Premium AV Surface-Mounted Loudspeaker.....	141
HD 641W Premium AV Surface-Mounted Loudspeaker	142
HD 851W Premium AV Surface-Mounted Loudspeaker.....	142
Music Horn Speaker	
MH 60 Music Horn Speaker	145
MH 200 200W Music Horn Speaker.....	146



Wireless Microphone

Introducing our Wireless Microphones line-up – experience the ease of ready-to-use, plug-and-play functionality, ensuring high-quality audio without the hassle of numerous cables for a clean and streamlined setup.

MX Series | Wireless Microphone System

- MX 02-H** **MX 02-B** **MX 02-L** **MX 02-D**
- MX 04-H** **MX 04-B** **MX 04-L** **MX 04-D**
- MX 08-H** **MX 08-B** **MX 08-L** **MX 08-D**

The MX Series from AEX System offers a versatile range of wireless microphone solutions, perfect for professional audio applications. This series includes four types of microphones: handheld, headset, lavalier and desktop, each available in models with 2, 4, or 8 microphones. It's designed to meet the needs of conferences, live performances, and broadcasting.

Using UHF frequency bands and advanced DPLL technology, the MX Series ensures automatic noise control and offers up to 200 selectable channels. Transmitters synchronize seamlessly with receivers

through infrared auto-channel tracking and system lock functions. Each unit features a high-resolution LCD screen displaying battery status, frequency signal, signal strength, and audio levels.

The receivers have both 6.3mm unbalanced and XLR balanced outputs for easy integration with audio equipment. The handheld microphones feature a durable full-alloy body and ergonomic grip. The system boasts a working distance of up to 80 meters, ensuring operational flexibility and high-quality audio for various professional applications.



MX 02



MX 04



MX 08



WH 1



WL 1



WB 1



WD 1

Wireless Microphone



MX 02-H



MX 04-H



MX 08-H

Wireless Microphone



MX 02-B



MX 04-B



MX 08-B

Wireless Microphone



MX 02-L



MX 04-L



MX 08-L

Wireless Microphone



MX 02-D



MX 04-D



MX 08-D

Wireless Microphone

MX Series Receiver

	MX 02-H / MX 02-B / MX 02-D	MX 04-H / MX 04-B / MX 04-D	MX 08-H / MX 08-B / MX 08-D
Operating Frequency	UHF 640.250MHz-690MHz (usable frequencies depend on local regulations e.g 800-850MHz)	UHF 640.250MHz-690MHz (usable frequencies depend on local regulations e.g 800-850MHz)	UHF 640.250MHz-690MHz (usable frequencies depend on local regulations e.g 800-850MHz)
Modulation Mode	Wideband FM	Wideband FM	Wideband FM
Channel Count	200	200	200
Frequency Stability	±0.005%	±0.005%	±0.005%
Dynamic Range	100dB	100dB	100dB
Deviation	±45kHz	±45kHz	±45kHz
Signal-to-Noise Ratio	>105dB	>105dB	>105dB
Total Harmonic Distortion	≤0.5%	≤0.5%	≤0.5%
Operating Distance	80m (ideal conditions)	80m (ideal conditions)	80m (ideal conditions)
Operating Temperature	-10°C~+50°C	-10°C~+50°C	-10°C~+50°C
Receiver Type	Dual Conversion Superheterodyne	Dual Conversion Superheterodyne	Dual Conversion Superheterodyne
Intermediate Frequency	1st IF: 110MHz, 2nd IF: 10.7MHz	1st IF: 110MHz, 2nd IF: 10.7MHz	1st IF: 110MHz, 2nd IF: 10.7MHz
Antenna Input	2 x BNC / 50Ω	4 x BNC / 50Ω	8 x BNC / 50Ω
Sensitivity	12dB V (80dB S/N)	12dB V (80dB S/N)	12dB V (80dB S/N)
Sensitivity Adjustment Range	12-32dB V	12-32dB V	12-32dB V
Spurious Suppression	≥75dB	≥75dB	≥75dB
Audio Output Level	+10dBV	+10dBV	+10dBV
Audio Output Connectors	2 x XLR balanced, 6.3mm unbalanced	4 x XLR balanced, 6.3mm unbalanced	8 x XLR balanced, 6.3mm unbalanced
Power Supply	220VAC/50-60Hz, 12VDC/1A	220VAC/50-60Hz, 12VDC/1A	220VAC/50-60Hz, 12VDC/2A
Operating Current	DC 12V, 330mA	DC 12V, 330mA	DC 12V, 330mA
Net Weight	Approx. 1.4Kg	Approx. 1.8Kg	Approx. 2.3Kg

MX Series Handheld Microphone

	MX 02-H / MX 04-H / MX 08-H
Microphone Type	Dynamic
Directional Pattern	Unidirectional
Output Impedance	600Ω ±30%
Sensitivity	-53dB ±3dB (0dB=1V/Pa at 1kHz)
Frequency Response	80Hz-10kHz
Carrier Frequency Range	UHF 640.250MHz-690MHz (usable frequencies depend on local regulations e.g 800-850MHz)
Oscillation Mode	PLL phase-locked frequency synthesis
Transmission Power	3mW/30mW
Carrier Deviation	0.5kHz
Harmonic Radiation	More than 45dB below the main wave
Modulation Mode	FM modulation
Maximum Input Sound Pressure	-11dBV
Frequency Setting	IR Sync
Power Supply	2 x AA 1.5V alkaline batteries
Battery Life	>10 hours at 30mW, >15 hours at 3mW
Net Weight	Approx. 280g (excluding batteries)

Wireless Microphone

MX Series Lavalier and Headset Microphone

	MX 02-L / MX 04-L / MX 08-L	MX 02-B / MX 04-B / MX 08-B
Microphone Type	Lavalier Microphone	Headset Microphone
Color	Black	Black
Pickup Pattern	Unidirectional	Unidirectional
Sensitivity	-40.5dB±2dB	-47dB±2dB
Output Impedance	≤2.2K Ω	≤2.2K Ω
Signal-to-Noise Ratio	≥59dB	≥58dB
Microphone Size	φ4.0 X 1.5mm	φ6.0 X 5.0mm
Frequency Response	20Hz~18KHz	45Hz~18KHz
Supply Voltage	2~10V.DC	2~10V.DC
Cable Length	1m	1m
Body Pack Transmitter		
Carrier Frequency Range	UHF 640.250MHz~690MHz	
Oscillation Mode	PLL Frequency Synthesis Technology	
Harmonic Radiation	Less than 45dBm above main wave	
Maximum Deviation	±45KHz	
Input Socket	3-pin mini XLR socket	
RF Power Output	10MW/40MW	
Battery	AAx2	
Current Consumption	110mA (typical)	
Battery Life	Approx. 11 hours	
Dimensions (mm)	84 (H) x 66 (W) x 23 (D)	
Weight (without battery)	Approx. 155g	

MX Series Desktop Microphone

	MX 02-D / MX 04-D / MX 08-D
Microphone Type	Supercardioid Condenser
Frequency Response	80Hz-16kHz
Microphone Input Impedance	1KΩ
Sensitivity	-46dBV/Pa
Maximum SPL	100dB (THD>3%)
Signal-to-Noise Ratio	>80dB (A)
Crosstalk	>70dB
Dynamic Range	>80dB
THD	<0.1%
Maximum Power Consumption	4W
Pickup Distance	1.5 meters
Compliance	IEC60914
Power Supply	Battery powered / Type-C charging port direct power supply
Display Screen	2-inch color screen
Mounting Method	Desktop
Dimensions (W, D, H)	160 x 110 x 60mm (excluding mic rod)
Mic Rod Length	420mm replaceable mic rod (black)
Battery	3 x 1.5V batteries, 1200mAh capacity, continuous 10-hour speaking time or 12-hour continuous use

Wireless Microphone

MQ Series | True Diversity Wireless Microphone System

MQ 01-H MQ 01-B

The MQ Series, known as the True Diversity Wireless Microphone System, is designed to meet the demands of high-fidelity audio performance with reliable signal reception. This series comes in two variations: the MQ 01-H Handheld and the MQ 01-B headset microphone. Both models operate within an ultra-wide UHF frequency range of 645MHz to 685MHz (usable frequencies depend on local regulations e.g 800-850MHz), ensuring robust and interference-free performance. The system supports an impressive effective working distance of up to 200 meters in ideal conditions, making it suitable for large venues and professional applications.

The True Diversity reception system in the MQ Series utilizes dual-channel reception circuits to minimize noise and signal dropouts caused by RF interference. With features like automatic frequency search within a 1km range and infrared (IR) synchronization, users can quickly and easily lock onto a clean, interference-free frequency. Additionally, the system includes both 6.3mm unbalanced and XLR balanced outputs for seamless integration with various audio processing equipment. The independent 2-inch LCD display provides clear information on battery status, signal strength, and audio levels, ensuring users can monitor the system effortlessly.



MQ 01-H



MQ 01-B

Wireless Microphone

MQ Series Receiver

MQ 01-H / MQ 01-B

RF Carrier Frequency Range	645MHz~685MHz (usable frequencies depend on local regulations e.g 800-850MHz)
Frequency Stability	±0.005%
Effective Working Distance	200 meters (ideal conditions)
Audio Compression	AVA classic audio compression circuit
Audio Frequency Response	50Hz~18KHz / ±3dB
Dynamic Range	>105dB
Signal-to-Noise Ratio (A-weighted)	>105dB
Total Harmonic Distortion	<0.6% @ 1KHz
Operating Temperature Range	-10°C~+50°C
Chassis Specifications	EIA standard 1U
Reception Bandwidth	645MHz~685MHz (usable frequencies depend on local regulations e.g 800-850MHz)
Reception Channels	Dual channel
Reception Mode	FM superheterodyne true diversity reception
RF Sensitivity	S/N ≥60dB at 25KHz deviation and 5dBv input
Squelch Adjustment	10dB~30dB, adjustable in 5dB steps
Frequency Synchronization	IR Sync
Maximum Output Level	+9dBV
Output Level Adjustment Range	-3dB~+18dB, adjustable in 3dB steps
Audio Output Connectors	2 XLR balanced outputs and 6.3mm unbalanced outputs
Power Supply	220VAC/50-60Hz, 12VDC/1A
Operating Current	DC 12V, 330mA
Dimensions (mm)	420mm (W) x 47mm (H) x 184mm (D)
Net Weight	Approx. 1.8Kg

MQ Series Handheld Microphone

MQ 01-H

Microphone Type	Wireless handheld microphone
Appearance	Innovative design, full alloy body, ergonomic grip
Carrier Frequency Range	645MHz~685MHz (usable frequencies depend on local regulations e.g 800-850MHz)
Oscillation Mode	PLL phase-locked frequency synthesis
Transmission Power	5mW/25mW
Carrier Error	0.5kHz
Harmonic Radiation	More than 45dB below the main wave
Modulation Mode	FM modulation
Nominal/Maximum Frequency Deviation	±45kHz
Maximum Input Sound Pressure	-11dBV
Frequency Setting	IR Sync
Power Supply	2 x AA 1.5V batteries
Battery Life	>8 hours
Dimensions (mm)	55mm (φ) x 290mm (L)
Net Weight (excluding batteries)	Approx. 340g

MQ Series Headset Microphone

MQ 01-B

Microphone Type	Headset Microphone
Color	Flesh-colored
Pickup Pattern	Unidirectional
Sensitivity	-47dB±2dB
Output Impedance	≤2.2K Ω
Signal-to-Noise Ratio	≥58dB
Microphone Size	φ6.0 X 5.0mm
Frequency Response	45Hz~18KHz
Supply Voltage	2~10V.DC
Cable Length	1m
Body Pack Transmitter	
Carrier Frequency Range	UHF 640.250MHz~690MHz (usable frequencies depend on local regulations e.g 800-850MHz)
Oscillation Mode	PLL Frequency Synthesis Technology
Harmonic Radiation	Less than 45dBm above main wave
Maximum Deviation	±45KHz
Input Socket	3-pin mini XLR socket
RF Power Output	10MW/40MW
Battery	AAx2
Current Consumption	110mA (typical)
Battery Life	Approx. 11 hours
Dimensions (mm)	84 (H) x 66 (W) x 23 (D)
Weight (without battery)	Approx. 155g

Wireless Microphone

AN 01 | Advanced Multi-Channel Antenna System

The AN 01 Advanced Multi-Channel Antenna System is designed to enhance the performance of wireless microphone systems by providing reliable signal distribution and amplification. This 10-channel UHF antenna distribution system can guide antenna signals from a pair of antennas to multiple receivers, effectively supporting up to 10 antenna channel ports. It amplifies RF signals to compensate for any attenuation that occurs during distribution, ensuring clear and distortion-free signal reception. With an effective range of up to 150 meters, the AN 01 is ideal for large venues and complex wireless setups. Additionally, it features an external 12V5A switching power supply that can provide four sets of 12V DC power outputs to wireless receivers, making it a versatile and powerful solution for professional audio applications.

The AN 01 is compatible with all wireless microphone receivers operating within the 450-970MHz frequency range. It includes two cascade ports for connecting an additional antenna distributor, making it suitable for extensive wireless systems. The system utilizes low-noise, high-quality components to maintain signal integrity with minimal distortion. The directional antennas, designed with a logarithmic periodic dipole array, offer optimal reception when oriented towards the desired coverage area. Integrated amplifiers with adjustable gain settings help compensate for signal losses over various lengths of coaxial cables. These antennas can be mounted on microphone stands, suspended from ceilings, or fixed to walls using the integrated rotatable adapter, providing flexible installation options to meet diverse operational needs.



AB 01 | Horizontal Bracket



ANF 01 | Antenna Fin



AB 02 | Vertical Bracket



AN 01

AN 01

Antenna Distributor	
Frequency Range	450~970MHz
Impedance	50Ω
Input Voltage	DC 12V 5A
Output DC Voltage	12V (four sets of DC output terminals)
Antenna Amplification Voltage	12V 150mA
Dimensions (mm)	480 x 200 x 45 (L x W x H)
Directional Antenna	
Frequency Range	470~960MHz
Gain	3dB/12dB (2-level adjustable)
Interface	BNC
Impedance	50Ω
Reception Angle	70°
Voltage	9~12V

Wireless Microphone





Conference System

Enhance your meetings with our Conference Systems, offering superior clarity and intuitive controls for seamless communication and efficient management.

CS 300M | Conference System Central Unit with Camera Tracking and Voting

CS 301C | Chairman Unit

CS 301D | Delegate Unit

The CS 300M Conference System Central Unit with Camera Tracking and Voting enhances conference management with a 5.0-inch color IPS touchscreen supporting English and Chinese menus. Featuring built-in WIFI for real-time date and time display, the system integrates an Android APP for easy local network control, configuration, and microphone tracking. It supports fast voting with results displayed on both the host and microphone screens and offers multiple audio outputs for various systems. The unit can manage up to 60 conference units directly or 300 units with extensions and supports third-party control via RS232 protocol. Its robust aluminum alloy construction ensures durability, while built-in volume controls and seamless HDMI switching enhance functionality. The CS 300M comes with a 10m cable for flexible installation.

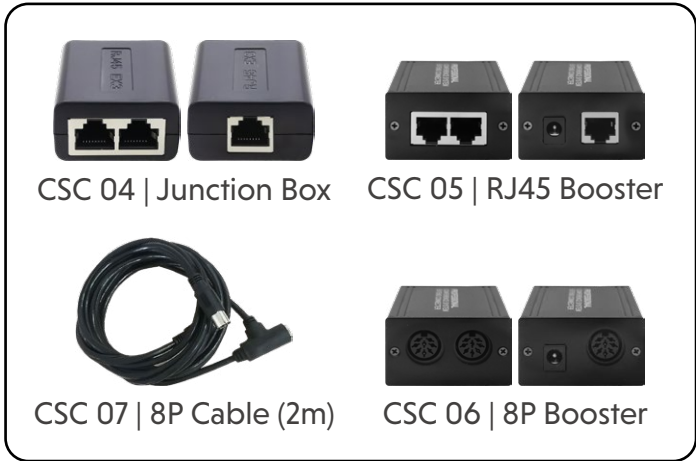
The CS 301C and CS 301D Microphone units, available in Chairman and Delegate versions, feature unidirectional condenser microphones with red ring indicator LEDs and durable aluminum alloy construction. Each unit includes a 4.0-inch color IPS touch display showing meeting mode, microphone ID, and speech status. The dual switch design ensures silent operation, and high-fidelity condenser microphones capture clear voice over 10 to 40 cm, with noise suppression extending to 50 cm to 80 cm. The units support third-party control, are powered by the main unit, and include a 3.5mm headphone jack, RJ45 and 8P conference ports, and fast voting capabilities. The CS 301C and CS 301D come with a 2m cable, ensuring ease of use and setup.



CS 300M



Compatible with dedicated Android App



CS 301C

CS 301D

Conference System

CS 300M

Display	5.0 Inch color IPS touchscreen
Network Timer	Built-in WIFI module
Mobile App	Android APP for local network control
Password Protection	Yes, with password reset option
Voting	Fast voting with results displayed on host and microphones, VGA output
Teleconferencing	Yes
Frequency Shifting	Built-in, suppresses screaming
Rack Mounting	19-inch standard rack (2U size)
Connection Ports	4x 8P conference ports, 4x RJ45 ports
Maximum Units Supported	60 units directly, 300 units with extension
Third-party Control	RS232 communication protocol
Audio Controls	Built-in volume control, microphone mute, and speaker management
HDMI Switcher	4 IN 1 OUT, seamless, supports up to 4 cameras, 1080P@60Hz
Camera Control Protocols	PELCO-D, PELCO-P, VISCA via RS-485
Recording	Built-in MP3 recorder, supports max 32G USB (approx. 14 days recording)
Conference Modes	Intelligent limit, FIFO, Intelligent apply, Open mode, Speech time, Chairman only, Voice control, Auto test
Input/Output Ports	8P-DIN x4, RJ45 x4, RCA x1, XLRM x1 (balanced), RCA x1, 6.35mm x1
Video Input/Output	4 HDMI IN / 1 HDMI OUT (1080P@60Hz)
Power Supply	AC220V-50HZ
Power Consumption	120W (MAX)
Frequency Response	20Hz-20KHz
Signal-to-Noise Ratio	78dB (1KHz THD1%)
Main Unit Cable Length	10M
Dimensions (mm)	480 x 325 x 88 (W x D x H)
Weight	8.5kg
Audio Impedance	LINE IN: 50KΩ, LINE OUT: 200Ω, BALANCE: 300Ω, MAX OUT: 400Ω
Colors	Black

CS 301C / CS 301D

Microphone Type	Unidirectional condenser
Display	4.0 inch 800x480 color IPS touchscreen
Service Call	Drink, pen, paper, other
Voting	Fast voting with display on host and microphones
Switch Type	Inductive touch switch, backup rubber physical switch
Speaking Distance	10 to 40 cm, up to 50 cm to 80 cm with noise suppression
Third-party Control	RS232 communication protocol
Power Supply	DC24V (from main unit)
Headphone Jack	3.5mm, with volume control knob
Connection Ports	RJ45 or 8P conference port
Chairman Controls	Shut down delegate, priority key for temporary silence
Sensitivity	-47dB
Signal-to-Noise Ratio	65dB
Frequency Response	100Hz-10KHz
Microphone Unit Cable Length	2M
Dimensions (mm)	160 x 110 x 60 (W x D x H) (excluding mic rod)
Weight	1.5kg
Colors	Black
Installation	Desktop
Mic Stem Length	220mm fixed square short rod

Conference System

CS 200M | Conference System Central Unit with Camera Tracking

CS 201C | Chairman Unit

CS 201D | Delegate Unit

CS 202C | Chairman Unit

CS 202D | Delegate Unit

The CS 200M Conference System Central Unit with Camera Tracking is a versatile and robust conference system designed to streamline and enhance meeting management. Featuring a 3.5-inch color display with support for both English and Chinese menus, CS200M offers a range of intelligent functions such as voice-activated microphones, adjustable thresholds, and automatic memory settings that retain configurations even after power interruptions. The unit supports central control via RS232, enabling integration with other conference equipment for seamless operation. Its durable aluminum alloy construction, enhanced with CNC precision machining and hard anodized surface treatment, ensures long-lasting performance. The CS 200M comes with a 10m cable and can manage up to 60 conference units directly or up to 300 units with extensions. It includes multiple audio outputs for various systems, built-in MP3 recording capabilities, and support for up to four HD cameras with seamless HDMI switching.

The CS 201C, CS 201D, CS 202C, and CS 202D Microphone units are designed for high-fidelity audio capture and user-friendly operation. The CS 201C and CS 201D features a 2.4-inch color display showing meeting mode, microphone ID, and speech status. The CS 202C and CS 202D, with their anodized brushed aluminum surface, provide clear voice capture over a range of 10 to 40 cm, with noise suppression extending to 50 cm to 80 cm. Both units support third-party central control via RS232, are powered by the main unit with safe low-voltage DC24V, and feature dual switch designs for silent operation. The microphones come with a 2m cable, a 3.5mm headphone jack for monitoring, and various connectivity options through RJ45 or 8P conference ports.



CS 200M



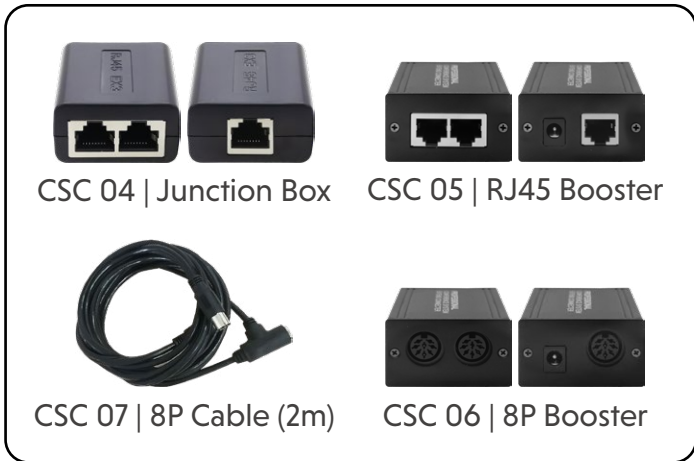
CS 202C

CS 202D



CS 201C

CS 201D



CSC 04 | Junction Box

CSC 05 | RJ45 Booster

CSC 07 | 8P Cable (2m)

CSC 06 | 8P Booster

Conference System

CS 200M

Display	3.5 Inch color display
Memory	Automatic memory function on power failure
Voice Control	Adjustable voice-activated microphone
Central Control	RS232 interface for central control
Built-in Equalizer	High, mid, bass adjustment, microphone volume control
Real-time Status	Microphone status indicators
Connection Ports	4x 8P conference ports, 4x RJ45 ports
Maximum Units Supported	60 units directly, 300 units with extension
Material	Aluminum alloy, hard anodized surface
Recording	Built-in MP3 recording, supports max 32G USB
Camera Support	4 HDMI IN/1 HDMI OUT (1080P@60Hz), supports 4 cameras
Control Protocols	PELCO-D, PELCO-P, VISCA via RS-485
Conference Modes	Intelligent limit, FIFO, Intelligent apply, Free, Speech time, Chairman only, Voice control, Auto test
Input/Output Ports	8P-DIN x4, RJ45 x4, RCA x1, XLRM x1 (balanced), RCA x1, 6.35mm x1
Power Supply	AC220V-50HZ
Power Consumption	120W (MAX)
Frequency Response	20Hz-20KHz
Signal-to-Noise Ratio	78dB (1KHz THD1%)
Main Unit Cable Length	10M
Dimensions (mm)	480 x 325 x 88 (W x D x H)
Weight	8.5kg
Colors	Dark gray
Audio Impedance	LINE IN: 50KΩ, LINE OUT: 200Ω, BALANCE: 300Ω, MAX OUT: 400Ω

CS 201C / CS 201D

CS 202C / CS 202D

Microphone Type	Unidirectional condenser	Unidirectional condenser
Display	2.4 inch color display	N/A
Material	High-strength anodized aluminum alloy	Anodized brushed aluminum alloy
Switch Type	Automotive-grade rubber switch	Automotive-grade rubber switch
Speaking Distance	10 to 40 cm, up to 50 cm to 80 cm with noise suppression	10 to 40 cm, up to 50 cm to 80 cm with noise suppression
Third-party Control	RS232 communication protocol	RS232 communication protocol
Power Supply	DC24V (from main unit)	DC24V (from main unit)
Headphone Jack	3.5mm, with volume control knob	3.5mm, with volume control knob
Connection Ports	RJ45 or 8P conference port	2.1m 8P cable, RJ45 optional
Chairman Controls	Priority key for temporary silence	Priority key for temporary silence
Sensitivity	-47dB	-47dB
Signal-to-Noise Ratio	65dB	65dB
Frequency Response	100Hz-10KHz	100Hz-10KHz
Microphone Unit Cable Length	2M	2M
Dimensions (mm)	160 x 110 x 60 (W x D x H) (excluding mic rod)	144 x 128 x 60 (W x D x H) (excluding mic rod)
Weight	1.4kg	1kg
Colors	Black	Silver/Black
Installation	Desktop	Desktop
Mic Stem Length	200mm fixed square short rod, 420mm long rod, 220mm adjustable (fixed square rod)	420mm gooseneck with red ring indicator, 200mm fixed square short rod optional

Conference System

CS 100M | Conference System Central Unit

CS 101C | Chairman Unit

CS 101D | Delegate Unit

CS 102C | Chairman Unit

CS 102D | Delegate Unit

The CS 100M Conference System Central Unit is designed to provide seamless and reliable performance for professional conference environments. Featuring an international standard 1.5U panel size, this unit can be easily installed in a 19-inch standard rack. With memory retention after power loss, adjustable voice-activated microphone functionality, and third-party control via RS232 communication protocol, it offers flexibility and ease of use. The 1.3-inch OLED display with English and Chinese menu options, combined with comprehensive audio output options, makes it a versatile choice for various applications. The CS 100M comes with a 10m cable and supports up to 60 conference system units, expandable to accommodate 300 units with additional power and extension modules. Its durable aluminum alloy construction ensures longevity and resilience.

The CS 101C and CS 101D Microphone Units complement the main unit with their professional-grade features, including a detachable gooseneck

microphone with a red indicator light and high-fidelity, unidirectional condenser performance. Each unit features a built-in speaker in the microphone, a 3.5mm headphone jack for monitoring, an LCD display for real-time updates, and supports third-party control for video tracking and microphone management. Powered by a 24V DC supply from the main unit, they come with a 2m cable and a durable ABS plastic shell with an organic glass finish.

The CS 102C and CS 102D models also feature a built-in speaker in the microphone, along with a 2.1M connection cable and an 8PIN female connector for hand-in-hand connections. They include a 1.3-inch blue OLED display for meeting information, a durable tact switch button with an LED indicator, and support for the RS232 communication protocol for central control. These models allow the Chairman unit to manage delegate microphones and control priority settings.



CS 100M



CS 101C

CS 101D



CS 102C

CS 102D

Conference System

CS 100M

Input/Output	8P-DIN×4, RJ45×4
Input	RCA×1
Output	XLRM×1 (Balanced), RCA×1, 6.35mm×1
Power Supply	AC220V-50HZ
Power Consumption	80W (MAX)
Frequency Response	20Hz-20KHz
Signal-to-Noise Ratio	78dB (1KHz THD1%)
Maximum Units Supported	60 units directly, 300 units with extension
Main Unit Cable Length	10M
Dimensions (W x D x H)	480×325×66mm
Weight	6.5kg
Colors	Black
Audio Impedance	LINE IN: 50KΩ, LINE OUT: 200Ω, BALANCE OUT: 300Ω, MAX OUT: 400Ω

CS 101C / CS 101D

CS 102C / CS 102D

Input/Output	8P-DIN×1 (Microphone line: 2M)	8P-DIN×1 (2M)
Input	Unidirectional Condenser Microphone	Unidirectional Condenser Microphone
Power Supply	DC24V (Provided by main unit)	DC24V (Provided by main unit)
Power Consumption	35mA	35mA
Sensitivity	-47dB	-47dB
Signal-to-Noise Ratio	65dB	65dB
Frequency Response	100-10KHz	100-10KHz
Microphone Unit Cable Length	2M	2M
Special Features	Built-in speaker	-
Weight	1.3kg	1kg
Dimensions (W x D x H)	200×112×55mm	144×128×60mm
Colors	Gray Black	Gray Black
Installation	Desktop	Desktop
MIC Stem Length	420mm (Adjustable)	420mm

Conference System

CS 700M | Wireless Conference System Central Unit

CS 701C | Wireless Chairman Unit

CS 701D | Wireless Delegate Unit

CS 702C | Wireless Chairman Unit

CS 702D | Wireless Delegate Unit

The CS 700M Wireless Conference System Central Unit is engineered to deliver exceptional performance and reliability for professional conference settings. Featuring a robust aluminum alloy panel with an anodized finish, this unit is designed for durability and aesthetic appeal, fitting into a 19-inch standard rack with a 2U size. It supports up to 300 wireless microphones and multiple chairpersons, offering various speaking modes such as chairman mode, FIFO, LIFO, and limit mode. The unit features a 4.3-inch high-definition capacitive touch screen with bilingual menu options and intuitive video tracking settings. With comprehensive connectivity options including RS-485 and RS-232 for camera control, UHF frequency auto-tracking, and built-in MP3 recording, the CS 700M ensures seamless operation and high-quality audio for any conference.

The CS 701C, CS 701D, CS 702C and CS 702D microphone complement the CS 700M with advanced features tailored for professional use. Both models include high-fidelity cardioid condenser microphones with anti-interference design to block mobile signal noise. The CS 701C and CS 701D model features a 4.0-inch IPS touch screen display for real-time conference status, while the CS 702C and CS 702D model offers a 2.0-inch IPS display. Both units support third-party control for video tracking and are equipped with large capacity rechargeable lithium batteries for extended use. With features such as priority function, touch-sensitive switches, and robust build quality, these microphone units ensure clear and reliable communication during conferences.



CS 700M



CSC 03 | Wireless Conference System Antenna



CS 701C



CS 701D



CS 702C



CS 702D

Conference System

CS 700M

Output	XLRM×1 (Balanced), 6.35mm×1, RS232×2, USB×1, RJ45×1, RS485×1
Input	USB-PC×1
Antenna Box	ANT-A, ANT-B, ANT-DATA
Power Supply	AC220V 50Hz
Power Consumption	600mA
Receive Sensitivity	-105dB
Signal-to-Noise Ratio	>85dB
Frequency Response	50Hz—15KHz
Maximum Units Supported	300 units
Total Harmonic Distortion (THD)	<0.01%
Carrier Frequency Range	UHF 600MHz-700MHz, 433MHz (usable frequencies depend on local regulations e.g 800-850MHz)
Effective Distance	40 meters (line of sight)
Weight	8kg
Dimensions (W x D x H)	480×325×88mm
Colors	Black

CS 701C / CS 701D

CS 702C / CS 702D

Battery Capacity	3000mAh Li	1500mAh Li
Input	Cardioid Condenser Microphone	Cardioid Condenser Microphone
Adjacent Frequency Interference	>60dB	>60dB
Power Consumption	280mA	220mA
Sensitivity	-47dB	-47dB
Signal-to-Noise Ratio	65dB	65dB
Frequency Response	100-10KHz	100-10KHz
UHF Frequency Range	UHF 600MHz-690MHz, 433MHz (usable frequencies depend on local regulations e.g 800-850MHz)	UHF 600MHz-690MHz, 433MHz (usable frequencies depend on local regulations e.g 800-850MHz)
Weight	1.5kg	1.2kg
Dimensions (W x D x H)	160×110×60mm (excluding mic stem)	153×153×47mm (excluding mic stem)
Colors	Black	Black
Installation	Desktop	Desktop
Mic Stem Length	220mm (Fixed)	220mm (Fixed)
Display Screen	4.0-inch IPS color touch screen	2.0-inch IPS color touch screen

Conference System

CS 900M | Wired and Wireless Conference System Central Unit with Camera Tracking

CS 901C | Wireless Chairman Unit

CS 901D | Wireless Delegate Unit

The CS900M Wired and Wireless Conference System Central Unit with Camera Tracking is a robust solution for modern conference environments, featuring a sleek aluminum alloy panel with a black brushed finish. This 2U 19-inch rack-mountable unit supports up to 300 wireless and 300 wired microphones. It offers chairman mode and FIFO mode, allowing up to four wired and four wireless microphones to speak simultaneously. The unit is compatible with previous CS version microphones, CS 201C and CS 201D. Equipped with a 4.3-inch capacitive touch screen, it provides intuitive menu navigation. Advanced features include real-time monitoring, automatic power-off for wireless units, high-intensity anti-mobile phone interference, digital password protection, and high-quality MP3 recording with up to 32GB USB storage. It supports video tracking with HDMI seamless switching matrices and multiple camera control protocols.

The CS 901C and CS 901D units feature rechargeable 1600mAh lithium batteries, providing up to 7 hours of operation on a single charge and 20 hours of standby. The chairman unit includes priority speaking functions and the ability to shut down all delegate units. Both models are equipped with unidirectional condenser gooseneck microphones with red ring indicator LEDs and a 2.4-inch color TFT display showing meeting information, equipment status, channel, ID number, and speaking time. The durable tact switch button with LED indicator and high-fidelity condenser microphones ensure clear voice capture over 10 to 40 cm, with noise suppression extending to 50 cm to 80 cm. The microphones are designed with high-strength anti-electromagnetic interference to prevent mobile phone interference noise.

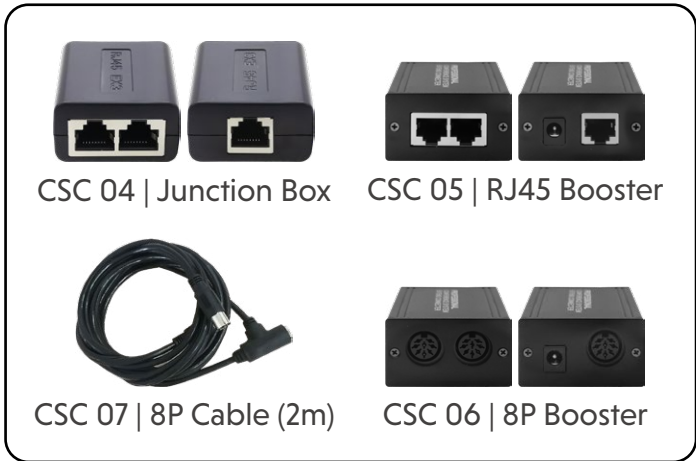


CS 900M



CS 901C

CS 901D



CSC 04 | Junction Box

CSC 05 | RJ45 Booster

CSC 07 | 8P Cable (2m)

CSC 06 | 8P Booster



Compatible with



CS 201C



CS 201D

Conference System

CS 900M

Output	XLRM×1 (Balanced), 6.35mm×1, USB×1
Power Supply	AC220V, Max 100W
Wireless Input	ANT-A, ANT-B, ANT-DATA
Receive Sensitivity	-105dB
Wireless Carrier Frequency	UHF 600MHz-700MHz (usable frequencies depend on local regulations e.g 800-850MHz)
Effective Wireless Range	40 meters (line of sight)
Signal-to-Noise Ratio (S/N)	>85dB
Frequency Response	50Hz—15KHz
Maximum Units Supported	300 units
Total Harmonic Distortion (THD)	<0.01%
Wired Input/Output	8P-DIN×4, RJ45×4
Weight	9kg
Dimensions (W×D×H)	480×325×88mm
Color	Black

CS 901C / CS 901D

Battery Capacity	1600mAh Li
Adjacent Frequency Interference	>60dB
Core Directivity	Cardioid
Sensitivity	-47dB
Transmission Power	>+10dBm(10mW)
Current Drain	230mAh
UHF Frequency Range	UHF600MHz-690MHz, 433MHz (usable frequencies depend on local regulations e.g 800-850MHz)
Frequency Response	100-10KHz
Signal-to-Noise Ratio (S/N)	65dB
Size	160×110×60mm (without mic stem)
Weight	1.4kg

Conference System

CSC 01 | Conference System Camera

The CSC 01 is a high-performance camera designed for professional applications such as remote education, conferencing, and telemedicine. It features advanced ISP processing technology and algorithms that deliver vivid, true-to-life images with excellent brightness uniformity, high clarity, and superior color reproduction. Equipped with a 1/2.8-inch high-quality image sensor, it supports full HD 1080p resolution at up to 60 frames per second, ensuring smooth and clear video output. The camera offers 20x optical zoom and 10x digital zoom, enhanced by leading auto-focus technology for rapid, accurate, and stable focusing. Its low-noise CMOS sensor and 2D/3D noise reduction technology guarantee high signal-to-noise ratio, producing clear images even in low-light conditions.

This versatile camera supports multiple video output interfaces, including HDMI, 3G-SDI, USB, and LAN, along with audio input interfaces that support various sampling rates and audio codecs. It offers robust pan-tilt performance with a super-silent mechanism for smooth and noiseless operation. The camera also supports multiple control protocols, including VISCA, PELCO-D, and PELCO-P, with RS232 and RS485 interfaces for seamless integration into existing systems. Additional features include support for H.265/H.264 video compression, multiple network protocols, remote control options, and low power consumption with a sleep/wake function.



Conference System

CSC 01

Camera & Lens	
Image Sensor	1/2.8-inch high-quality CMOS sensor
Effective Pixels	2.07 million, 16:9
Video Signal	1080P60/50/30/25; 1080I60/50; 720P30/25
Optical Zoom	20x optical zoom f=5.5–110mm
Viewing Angle	3.3° (tele) to 54.7° (wide)
Aperture	F1.6 – F3.5
Digital Zoom	10x
Minimum Illumination	0.5Lux (F1.8, AGC ON)
Digital Noise Reduction	2D & 3D digital noise reduction
White Balance	Auto/Manual/One-Push/3000K/4000K/5000K/6500K
Focus	Auto/Manual
Iris	Auto/Manual
Electronic Shutter	Auto/Manual
Backlight Compensation	On/Off
Wide Dynamic Range	Off/Dynamic Level Adjustment
Video Adjustment	Brightness, Color, Saturation, Contrast, Sharpness, B/W Mode, Gamma Curve
Signal-to-Noise Ratio	>55dB
Input/Output Interfaces & Supported Protocols	
Video Interfaces	HDMI, 3G-SDI, LAN
Dual Stream Output	Yes
Video Compression Formats	H.265, H.264
Control Signal Interfaces	RS-232 (with loop-through RS232 output), RS-485
Control Protocols	VISCA, Pelco-D, Pelco-P
Baud Rates	115200/9600/4800/2400bps
Audio Input Interfaces	Dual-channel 3.5mm line-in
Audio Compression Formats	AAC, MP3, PCM
Network Interface	100M LAN (10/100BASE-TX), 5G WiFi (optional), network VISCA control protocol
Network Protocols	RTSP, RTMP, ONVIF, GB/T28181
Power Interface	HEC3800 power socket (DC12V)
Pan/Tilt Parameters	
Pan Range	-170° to +170°
Tilt Range	-30° to +90°
Pan Speed	0.1 to 60°/sec
Tilt Speed	0.1 to 30°/sec
Preset Speed	Pan: 60°/sec, Tilt: 30°/sec
Preset Positions	Up to 255 (10 via remote)
Other Parameters	
Power Adapter	Input AC110V-AC220V, Output DC12V/1.5A
Input Voltage	DC12V±10%
Input Current	1A (max)
Power Consumption	12W (max)
Storage Temperature	-10°C to +60°C
Storage Humidity	20% to 95%
Operating Temperature	-10°C to +50°C
Operating Humidity	20% to 80%
Dimensions (W x H x D)	150mm x 150mm x 167.5mm
Weight	1.4kg
Environment	Indoor
Remote Maintenance	Remote upgrade, reboot, reset
Included Accessories	12V/1.5A power adapter, RS232 control cable, USB 3.0 cable (U3 model), USB 2.0 cable (U2 model), remote control, manual, warranty card
Optional Accessories	Mounting bracket

Conference System

CSC 02 | Wired Conference System Expander

The CSC 02 is a durable and aesthetically pleasing expansion power unit designed for conference systems, featuring a robust aluminum alloy construction and a 19-inch standard rack design. It includes three unit ports and two expansion ports, capable of connecting up to 60 conference units, providing additional power supply to the main unit. The expansion unit automatically powers on when the main conference unit is activated, ensuring synchronized operation across multiple expansion units.



CSC 02

Input/Output	8P-DIN×5
Power Supply	AC220V-50HZ
Power Consumption	120W (MAX)
Dimensions (W x D x H)	480×325×88mm
Weight	8.5kg
Colors	Dark Gray

PS 801 | Conference System microphone Charger

The PS 801 is a robust 28-port USB charger designed to simultaneously charge up to 28 devices. It features multiple short-circuit protections that automatically cut off the output in case of a short circuit, as well as input and output overcurrent and undervoltage protection. The charger intelligently identifies connected devices to provide a maximum output current of 1A. Additionally, it includes leakage protection that automatically cuts off output in case of leakage. The PS 801 is equipped with a power switch with a status indicator light and a digital display for real-time visualization of charging voltage, ensuring clear and safe operation.



PS 801

Output	5V 1A
Dimensions (W x D x H)	420 x 180 x 61 mm
Power	90W



Audio Mixing Console

Unlock sonic precision with our Audio Mixing Consoles. Seamlessly blend and shape your sound, whether in live events, banquets, meeting rooms, multipurpose halls and etc. Elevate your audio experience to new heights.



Bobcat series**M 08A | Bobcat Series 8-Channel Mixer****M 16A | Bobcat Series 16-Channel Mixer****M 12A | Bobcat Series 12-Channel Mixer****M 24A | Bobcat Series 24-Channel Mixer**

The AEX Bobcat Series analog mixer is the ideal choice for both portable setups and permanent installations, offering a wide range of advanced features and exceptional sound quality. With the Bobcat Series' high-quality op-amp, your mix will maintain its transparency and clarity. Capture the true essence of your microphones with the crystal clear preamps of the M-Series, delivering natural bass tones and seamless highs.



M 08A



M 12A



M 16A



M 24A

Audio Mixing Console

M 08A

M 12A

Frequency Response	20Hz-20KHz \pm 3dB	20Hz-20KHz \pm 3dB
Signal-to-Noise Ratio	>80dB	>80dB
Input Sensivity/Impedance	Mic: 0.7mV/200 Ω to 600 Ω balanced Line: 400mV/47 Ω Phono: 2.5mV/47 Ω Aux: 300mV	Mic: 0.7mV/200 Ω to 600 Ω balanced Line: 400mV/47 Ω Phono: 2.5mV/47 Ω Aux: 300mV
Mixed Output Voltage	4V Max	4V Max
Total Harmonic Distortion + Noise	Less than 0.03% (at 1KHz)	Less than 0.03% (at 1KHz)
Common Mode Rejection Ratio	-70dB	-70dB
Power Consumption	30W	30W
Equalization	High: \pm 15dB at 12KHz Mid: \pm 15dB at 2.5KHz Low: \pm 15dB at 80KHz	High: \pm 15dB at 12KHz Mid: \pm 15dB at 2.5KHz Low: \pm 15dB at 80KHz
Input Power	AC220-240V/50-60Hz	AC220-240V/50-60Hz
Features	<ul style="list-style-type: none"> • 8-Channel Professional Mixer • Blue LCD Display • Durable and Precise Straight Slider Faders • +48V Phantom Power • Wireless Bluetooth Connection • Plug-and-Play USB • Professional Three-Band EQ 	<ul style="list-style-type: none"> • 12-Channel Professional Mixer • Blue LCD Display • Durable and Precise Straight Slider Faders • +48V Phantom Power • Wireless Bluetooth Connection • Plug-and-Play USB • Professional Three-Band EQ
Crosstalk between channels	Better than -70db at 1KHz	Better than -70db at 1KHz

M 16A

M 24A

Frequency Response	20Hz-20KHz \pm 3dB	20Hz-20KHz \pm 3dB
Signal-to-Noise Ratio	>80dB	>80dB
Input Sensivity/Impedance	Mic: 0.7mV/200 Ω to 600 Ω balanced Line: 400mV/47 Ω Phono: 2.5mV/47 Ω Aux: 300mV	Mic: 0.7mV/200 Ω to 600 Ω balanced Line: 400mV/47 Ω Phono: 2.5mV/47 Ω Aux: 300mV
Mixed Output Voltage	4V Max	4V Max
Total Harmonic Distortion + Noise	Less than 0.03% (at 1KHz)	Less than 0.03% (at 1KHz)
Common Mode Rejection Ratio	-70dB	-70dB
Power Consumption	30W	30W
Equalization	High: \pm 15dB at 12KHz Mid: \pm 15dB at 2.5KHz Low: \pm 15dB at 80KHz	High: \pm 15dB at 12KHz Mid: \pm 15dB at 2.5KHz Low: \pm 15dB at 80KHz
Input Power	AC220-240V/50-60Hz	AC220-240V/50-60Hz
Features	<ul style="list-style-type: none"> • 16-Channel Professional Mixer • Blue LCD Display • Durable and Precise Straight Slider Faders • +48V Phantom Power • Wireless Bluetooth Connection • Plug-and-Play USB • Professional Three-Band EQ 	<ul style="list-style-type: none"> • 24-Channel Professional Mixer • Blue LCD Display • Durable and Precise Straight Slider Faders • +48V Phantom Power • Wireless Bluetooth Connection • Plug-and-Play USB • Professional Three-Band EQ
Crosstalk between channels	Better than -70db at 1KHz	Better than -70db at 1KHz

Audio Mixing Console

Lynx series

M 08AG | Lynx Series 8-Channel Mixer, 2 Sub-Group

M 12AG | Lynx Series 12-Channel Mixer, 2 Sub-Group

M 16AG | Lynx Series 16-Channel Mixer, 2 Sub-Group

M 24AG | Lynx Series 24-Channel Mixer, 2 Sub-Group

Introducing the AEX Lynx series mixing consoles, with sub-group function setting a new standard for refinement. Experience accessible mixing like never before, with unparalleled sonic purity and unrivaled sound shaping capabilities that empower engineers with unprecedented creative freedom. The Lynx series embodies the pinnacle of live sound standards, showcasing the most advanced and expressive form. These consoles boast extensive capabilities to handle any application with ease. Elevate your audio experience with the AEX Lynx series, where innovation meets excellence.



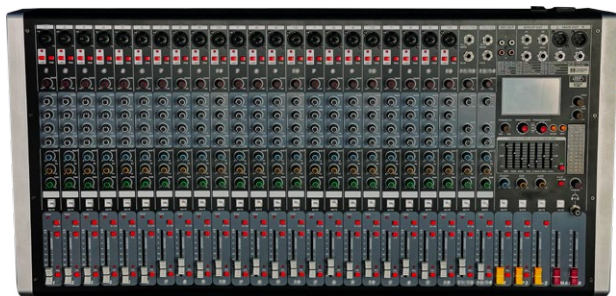
M 08AG



M 12AG



M 16AG

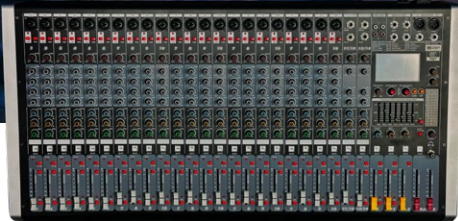


M 24AG

Audio Mixing Console

	M 08AG	M 12AG	M 16AG	M 24AG
Channels	6 mono, 2 stereo	10 mono, 2 stereo	14 mono, 2 stereo	22 mono, 2 stereo
EQ Equalizer	3-band EQ on each channel	3-band EQ on each channel	3-band EQ on each channel	3-band EQ on each channel
Mid-Frequency Sweep	Yes	Yes	Yes	Yes
Woofers	60mm	60mm	60mm	60mm
Equalization	Dual 7-band	Dual 7-band	Dual 7-band	Dual 7-band
Aux Outputs	2	2	2	2
Group Returns	1	1	1	1
Grouping	2	2	2	2
Stereophonic Outputs	2 groups	2 groups	2 groups	2 groups
DSP Effects	99 types	99 types	99 types	99 types
Low-Pass Filtering XLR Output	Yes	Yes	Yes	Yes
MP3 Player	Built-in, high-quality	Built-in, high-quality	Built-in, high-quality	Built-in, high-quality
Bluetooth Playback	Yes, with display	Yes, with display	Yes, with display	Yes, with display
USB Recording	Yes	Yes	Yes	Yes
Phantom Power	+48V	+48V	+48V	+48V
Input Sensitivity	Microphone: -60dB	Microphone: -60dB	Microphone: -60dB	Microphone: -60dB
Stereo Channel Input Sensitivity	-40dB	-40dB	-40dB	-40dB
Effect Send Sensitivity	-20dB	-20dB	-20dB	-20dB
Effect Return Sensitivity	-20dB	-20dB	-20dB	-20dB
Low-Frequency Equalization	±15dB/60Hz	±15dB/60Hz	±15dB/60Hz	±15dB/60Hz
Max Output Level	20dBm	20dBm	20dBm	20dBm
Total Harmonic Distortion	0.02% @ 0dB 1KHz	0.02% @ 0dB 1KHz	0.02% @ 0dB 1KHz	0.02% @ 0dB 1KHz
Frequency Response	20Hz~20KHz	20Hz~20KHz	20Hz~20KHz	20Hz~20KHz
Power Output	30W	30W	350W*2	350W*2
Power Voltage	100V-240V/50Hz	100V-240V/50Hz	100V-240V/50Hz	100V-240V/50Hz

Audio Mixing Console





Digital Audio Mixing Console

Step into the future of sound control with our Digital Audio Mixing Consoles. Harness cutting-edge technology for precise, versatile mixing in any environment. Redefine your audio possibilities effortlessly.

MM 86 | Maxx Digital Mixer

Introducing the MM 86 Digital Mixer, a versatile solution featuring 8 inputs and 6 outputs, designed to meet the demands of various audio environments. This advanced mixer comes with built-in digital audio processing capabilities, including effects, EQ, and compression, ensuring professional-quality sound. The USB interface allows seamless audio transmission to mobile phones and computers. With 16 customizable digital reverb effects, easily adjustable via the intuitive encoder, the MIXX8.6 is perfect for small-scale performances, conferences, speeches, KTVs, live streaming, and more. Its sleek, user-friendly design and well-organized function buttons make it an ideal choice for any audio setup.



MM 86

Sample Rate	24bit, 48kHz
Frequency Response	20 Hz to 20 kHz +0/-1 dB
T.H.D.	<0.1%
Signal to Noise Ratio	90 dB Single channel max fader (A weighted)
Dynamic Range	100 dB Single channel max fader (A weighted)
Common Mode Rejection Ratio	>70 dB @1 kHz
MIC Input Impedance	3.3k Ω (XLR Balance); 1.8 k Ω (1/4")
LINE Input Impedance	10K Ω (1/4")
Output Impedance	150 Ω
Gain	0 to 60 dB (XLR)
FOOT SW	REVERB ON/OFF
Phantom Power Supply	+48V
USB Audio	2IN/2OUT compliant with USB audio class 2.0
Power Supply	DC 5V (1A)
Power Consumption	Up to 5W
Dimensions (mm)	260(L) x 230(H) x 89(D)

Digital Audio Mixing Console

Leopard series

M 16D | Leopard Series 16-Channel Digital Mixer

M 24D | Leopard Series 24-Channel Digital Mixer

M 32D | Leopard Series 32-Channel Digital Mixer

The Leopard Series, comprising the M16D, M24D, and M32D digital audio mixers, represents a cutting-edge leap in sound engineering technology. Developed on a robust multi-OS platform that includes iOS, Android, and Windows, these mixers are immune to viruses, ensuring stable and secure operations. Each model features a powerful quad-core processor, rapid boot-up times of 17 seconds, and intuitive controls with Chinese display options for ease of use. From seamless wired to wireless transitions within network areas, the series offers flexibility allowing sound technicians to move freely and adjust settings remotely, enhancing the user experience.

Distinguished by their sophisticated channel configurations, the M16D, M24D, and M32D are equipped with numerous professional-grade features. These include multiple MIC inputs with digital gain adjustment, +48V phantom power, built-in noise gates, compressors, and a comprehensive array of output options. High-resolution touch displays, extensive parametric equalization, and dual DSP effects per channel enrich the sound customization capabilities. Moreover, each model supports quick scene recalls and user-specific parameter storage, which can be managed remotely, offering unparalleled control for live performances and studio settings.



M 16D



M 24D



M 32D

Digital Audio Mixing Console

M 16D

Input	Mic/Line Inputs: 1-12	Balanced, XLR and 1/4" TRS jack,
	Input Sensitivity (XLR/ TRS)	XTR1.5mv,TRS change to 7mv
	Analogue Gain	-32db To 10db , 0.6~0.7 Steps
	Maximum Input Level (XLR / TRS)	+19dBu/+29dBu
	Input Impedance (XLR / TRS)	MIC>5K, LINE>10K
	Mic Stereo Line Inputs	Yes
	Parameters linked	EQ, dynamics, insert, delay, assignments, sends, Ducker
	Polarity	Normal/Reverse
	Stereo Line Inputs	
	ST1/ST2	Balanced, 1/4 TRS Jack
	ST3 connector	USB B Streaming, U Disk, S/PDIF
	Input Sensitivity	Nominal 4dB
	Analogue Gain	-32db To 10db , 0.6~0.7 Steps
	Maximum Input Level	+29dB
	Input Impedance	>7KΩ
	Stereo linked	Yes
	Parameters linked	EQ, dynamics, insert, delay, assignments, sends, Ducker
Polarity	Normal/Reverse	
Output	Mix1-10 and LR Out	Balanced, XLR, L/R,4SUB,6AUX
	Output Impedance	<75Ω
	Nominal Output	+4dbu=0db meter reading
	Residual Output Noise	=-91dbu
	Mix insertion	Assign FX to the mix channel
	Dynamic Range	112dB
	S/N Ratio	XLR≥ 92db,TRS≥82db
	Maximum Output Level	4VAC MAX
	THD	<0.0003% (1KHzFull Power)
	Frequency Response	20HZ-20KHZ+/-0.5db
	Sampling Rate	48KHz ±100PPM
	ADC/DCA	24 bit Delta-sigma
	FX	Internal FX
Types		Reverbs, Delays, Gated Reverb, ADT
2 dedicated Stereo FX returns		Fader, Pan, Mute, Routing to Mix/LR, 5-Band PEQ
System	Linux system	Chinese or English

Control	Faders	ALPS 100mm motorised
	Touch Screen	4.3" TFT, 480×272 resolution
	Output Groups	Yes
	Mute Groups	No
	Network	TCP/IP Ethernet for PC and iOS apps
	System Update	USB disk
	Wire connected	Windows PC software connected
	Wireless connected	Windows PC/iPad/android
Input Processing	Source	Local CH1-CH12, ST1 Local ST2 digital
	EQ	5-Band EQ, (20HZ--20KHZ)±12dB, Q 0.3~15 available
	High and low pass	12db/24db,(BT/BS/LRK),20-20K
	Noise gate	Self key Sidechain
	Gate threshold	-135db To-40db
	Attack /release	50us-300ms/10ms-5s
	Compressor	Self key Sidechain
	Threshold / Ratio	-40db-+6db/1:1 infinity
Delay	MAX 20ms	
Output Processing	Output channels	L/R,2SUB,4AUX
	EQ	12 Bands EQ, (20HZ--20KHZ)±12dB,Q0.3~15 available
	High and low pass	12db/24db,(BT/BS/LRK),20-20KHZ
	Compressor	Self key Sidechain
	Threshold / Ratio	-40db-+6db/1:1 infinity
	Delay	MAX 30ms
USB	Driver	CH340(USB A)
	USB A	USB disk
	Stereo Record	2channels(wav/mp3)48KHz 24
	Stereo Playback	2channels(WAV/MP3)32-96KHz,16-24bit
USB Audio	USB Audio Streaming	USB B
	Send (upstream)	2channels WAV,32KHz-96KHz 24bit
	Return (downstream)	2Channels WAV, MP3,48KHz,24Bit
Power		100-240VAC,50-60H,150W

Digital Audio Mixing Console

M 24D

Input	Mic/Line Inputs: 1-24	Balanced, XLR and 1/4" TRS jack,
	Input Sensitivity (XLR/ TRS)	XTR1.5mv,TRS change to 7mv
	Analogue Gain	-32db To 10db , 0.6~0.7 Steps
	Maximum Input Level (XLR / TRS)	+19dBu/+29dBu
	Input Impedance (XLR / TRS)	MIC > 5K, LINE > 10K
	Mic Stereo Line Inputs	Yes
	Parameters linked	EQ, dynamics, insert, delay, assignments, sends, Ducker
	Polarity	Normal/Reverse
	Stereo Line Inputs	
	ST1/ST2	Balanced, 1/4 TRS Jack
	ST3 connector	USB B Streaming, U Disk, S/PDIF
	Input Sensitivity	Nominal 4dB
	Analogue Gain	-32db To 10db, 0.6 ~ 0.7 Steps
	Maximum Input Level	+29dB
	Input Impedance	>7KΩ
	Stereo linked	Yes
	Parameters linked	EQ, dynamics, insert, delay, assignments, sends, Ducker
Polarity	Normal/Reverse	
Output	Mix1-10 and LR Out	Balanced, XLR, L/R,4SUB,6AUX
	Output Impedance	<75Ω
	Nominal Output	+4dbu=0db meter reading
	Residual Output Noise	=-91dbu
	Mix insertion	Assign FX to the mix channel
	Dynamic Range	112dB
	S/N Ratio	XLR≥ 92db,TRS≥82db
	Maximum Output Level	4VAC MAX
	THD	<0.0003% (1KHzFull Power)
	Frequency Response	20HZ-20KHZ+/-0.5db
	Sampling Rate	48KHz ±100PPM
	ADC/DCA	24 bit Delta-sigma
	FX	Internal FX
Types		Reverbs, Delays, Gated Reverb, ADT
4 dedicated Stereo FX returns		Fader, Pan, Mute, Routing to Mix/LR, 5-Band PEQ
System	Linux system	Chinese or English

Control	Faders	ALPS 100mm motorised
	Touch Screen	7" TFT, 800 x 480 resolution
	Output Groups	Yes
	Mute Groups	No
	Network	TCP/IP Ethernet for PC and iOS apps
	System Update	USB disk
	Wire connected	Windows PC software connected
	Wireless connected	Windows PC/iPad/android
Input Processing	Source	Local CH1-CH24, ST1 Local ST2 digital
	EQ	5-Band EQ, (20HZ--20KHZ)±12dB, Q 0.3-15 available
	High and low pass	12db/24db,(BT/BS/LRK),20-20K
	Noise gate	Self key Sidechain
	Gate threshold	-135db To-40db
	Attack /release	50us-300ms/10ms-5s
	Compressor	Self key Sidechain
	Threshold / Ratio	-40db-+6db/1:1 infinity
	Delay	MAX 20ms
	Output Processing	Output channels
EQ		15 Bands EQ, (20HZ--20KHZ)±12dB,Q0.3-15 available
High and low pass		12db/24db,(BT/BS/LRK),20-20KHZ
Compressor		Self key Sidechain
Threshold / Ratio		-40db-+6db/1:1 infinity
Delay		MAX 30ms
USB	Driver	CH340(USB A)
	USB A	USB disk
	Stereo Record	2channels(wav/mp3)48KHz 24
	Stereo Playback	2channels(WAV/MP3)32-96KHz,16-24bit
USB Audio	USB Audio Streaming	USB B
	Send (upstream)	2channels WAV,32KHz-96KHz 24bit
	Return (downstream)	2Channels WAV, MP3,48KHz,24Bit
Power	100-240VAC,50-60H,150W	

Digital Audio Mixing Console

M 32D

Input	Mic/Line Inputs: 1-32	Balanced, XLR and 1/4" TRS jack,
	Input Sensitivity (XLR/ TRS)	XTR1.5mv,TRS change to 7mv
	Analogue Gain	-32db To 10db , 0.6~0.7 Steps
	Maximum Input Level (XLR / TRS)	+19dBu/+29dBu
	Input Impedance (XLR / TRS)	MIC > 5K, LINE > 10K
	Mic Stereo Line Inputs	Yes
	Parameters linked	EQ, dynamics, insert, delay, assignments, sends, Ducker
	Polarity	Normal/Reverse
	Stereo Line Inputs	
	ST1/ST2	Balanced, 1/4 TRS Jack
	ST3 connector	USB B Streaming, U Disk, S/PDIF
	Input Sensitivity	Nominal 4dB
	Analogue Gain	-32db To 10db, 0.6 ~ 0.7 Steps
	Maximum Input Level	+29dB
	Input Impedance	>7KΩ
	Stereo linked	Yes
Parameters linked	EQ, dynamics, insert, delay, assignments, sends, Ducker	
Polarity	Normal/Reverse	
Output	Mix1-10 and LR Out	Balanced, XLR, L/R, 4SUB, 6AUX
	Output Impedance	<75Ω
	Nominal Output	+4dbu=0db meter reading
	Residual Output Noise	=-91dbu
	Mix insertion	Assign FX to the mix channel
	Dynamic Range	112dB
	S/N Ratio	XLR≥ 92db,TRS≥82db
	Maximum Output Level	4VAC MAX
	THD	<0.0003% (1KHzFull Power)
	Frequency Response	20HZ-20KHZ+/-0.5db
	Sampling Rate	48KHz ±100PPM
	ADC/DCA	24 bit Delta-sigma
	FX	Internal FX
Types		Reverbs, Delays, Gated Reverb, ADT
4 dedicated Stereo FX returns		Fader, Pan, Mute, Routing to Mix/LR, 5-Band PEQ
System	Linux system	Chinese or English

Control	Faders	ALPS 100mm motorised
	Touch Screen	7" TFT, 800×480 resolution
	Output Groups	Yes
	Mute Groups	No
	Network	TCP/IP Ethernet for PC and iOS apps
	System Update	USB disk
	Wire connected	Windows PC software connected
	Wireless connected	Windows PC/iPad/android
Input Processing	Source	Local CH1-CH32, ST1 Local ST2 digital
	EQ	5-Band EQ, (20HZ--20KHZ)±12dB, Q 0.3-15 available
	High and low pass	12db/24db,(BT/BS/LRK),20-20K
	Noise gate	Self key Sidechain
	Gate threshold	-135db To-40db
	Attack /release	50us-300ms/10ms-5s
	Compressor	Self key Sidechain
	Threshold / Ratio	-40db-+6db/1:1 infinity
	Delay	MAX 20ms
	Output Processing	Output channels
EQ		15 Bands EQ, (20HZ--20KHZ)±12dB,Q0.3-15 available
High and low pass		12db/24db,(BT/BS/LRK),20-20KHZ
Compressor		Self key Sidechain
Threshold / Ratio		-40db-+6db/1:1 infinity
Delay		MAX 30ms
USB	Driver	CH340(USB A)
	USB A	USB disk
	Stereo Record	2channels(wav/mp3)48KHz 24
	Stereo Playback	2channels(WAV/MP3)32-96KHz,16-24bit
USB Audio	USB Audio Streaming	USB B
	Send (upstream)	2channels WAV,32KHz-96KHz 24bit
	Return (downstream)	2Channels WAV, MP3,48KHz,24Bit
Power		100-240VAC,50-60H,150W

Digital Audio Mixing Console

Jaguar series

M 20DS | Jaguar Series 20-Channel Digital Mixer

M 24DS | Jaguar Series 24-Channel Digital Mixer

M 32DS | Jaguar Series 32-Channel Digital Mixer

The Jaguar digital audio mixing consoles, including the M 20DS, M 24DS, and M 32DS, offer versatile solutions for audio production with key features tailored for professional use. Built on a stable Linux operating system, the series ranges from 12 to 32 MIC/Line inputs to accommodate various input types, including stereo and digital AES inputs. The higher models (M 20DS, M 24DS, M 32DS) feature a 10.1-inch 1280x800 HD touchscreen.

These consoles are equipped with professional effect DSP chips, customizable TFT LCD displays for each channel, and a built-in RTA real-time spectrum display function. Unique to the series are the high-precision ALPS electric push faders and the option for remote control via PC, iPad, or Android devices, ensuring data safety with automatic shutdown parameter saving and facilitating ease of use with RS232 central control.

Moreover, the Jaguar Series is enhanced with an onboard signal generator producing pink noise, sine waves, and white noise, customizable user buttons for tailored control, and an integrated sound card for direct music playback from a PC or MP3. It also features four quick recall scene modes and storage for up to 100 scenes, allowing extensive I/O expansion, particularly in the M20DS, M 24DS, and M 32DS models through DANTE protocol compatibility, connection with two 16 in/8 out stage interface boxes, and support for multi-channel playback and recording alongside Bluetooth 5.0 for digital playback. This comprehensive suite of features positions the Jaguar series as a versatile and reliable choice for professional audio mixing, catering to a wide range of professional environments and requirements.



M 20DS



M 24DS



M 32DS

Digital Audio Mixing Console

M 20DS

Input	Mic/Line Inputs: 1-16(Local)	Balanced, XLR and 1/4" TRS Jack
	Input Sensitivity (XLR/ TRS)	XLR:6mv TRS:7mv
	Input electron gain	-32db To 10db, 0.6-0.7 Steps
	Maximum Input Level (XLR / TRS)	+23dBu
	Input Impedance (XLR / TRS)	MIC>10KΩ, LINE>5KΩ
	Mic Stereo Line Inputs	YES
	Parameters linked	EQ, Dynamics, insert, delay, assignments, sends, Ducker
	Polarity	Normal/Reverse
	Stereo Line Inputs	
	ST1/ST2	Lotus socket
	ST3 connector	USB B Streaming, U Disk, S/PDIF
	Input Sensitivity	Nominal 4dB
	Analog Gain	-32db To 10db, 0.6-0.7 Steps
	Maximum Input Level	+29dB
	Input Impedance	>7KΩ
	Stereo linked	Yes
Outputs	Mix1-14 and LR Out(Local)	Balanced, XLR, L/R, 4SUB, 10AUX
	Output Impedance	<75 Ω
	Nominal Output	=+4dbu=0db meter reading
	Residual Output Noise	=-91dbu
	Mix insertion	Assign FX to the mix channel
	Dynamic Range	<=115dB
	S/N Ratio	XLR=> 92db, TRS=> 82dB
	Maximum Output Level	4VAC MAX
	THD	<0.018% (1Khz Full Power)
	Frequency Response	20HZ-20KHZ +/- 0.5db
	Sampling Rate	48KHz ± 100PPM
	ADC/DCA	24bit Delta-sigma
	FX	Internal FX
Types		Reverbs, Delays, Gated Reverb, ADT
4dedicated Stereo FX returns		Fader, Pan, Mute, Routing to Mix/LR, 5-Band PEQ
System	Linux system	Chinese or English

Control	Faders	ALPS 100mm motorised
	Touch Screen	10.1" TFT, 1280x800 resolution
	DCA Groups	Eight
	Mute Groups	Eight
	Network	TCP/IP Ethernet for PC and iOS apps
	System Update	USB disk
	Wire connected	Windows PC software connected
	Wireless connected	Windows PC/iPad/android
Input Processing	Source	Local CH1-CH16, ST1ST2 Local ST3 digital
	EQ	5-Band EQ, (20HZ-20KHZ) ±12dB, Q 0.3~15 available
	High and low pass	12db/24db, (BT/BS/LRK), 20HZ-20KHZ
	Noise gate	Through the switch
	Gate threshold	-135db to -40db
	Attack /release	50us-30ms/10ms-5s
	Compressor	Through the switch
	Threshold / Ratio	-40db to +6db/1:1 infinity
	Delay	MAX40ms
	Remote Extension	Input 1-16, output 1-8. FX1/2
Output Processing	Output channels	LR, 4SUB, 10AUX
	EQ	15 Bands EQ, (20HZ-20KHZ) +12dB, Q0.3~15 available
	High and low pass	12db/24db, (BT/BS/LRK), 20HZ-20KHZ
	Compressor	Through the switch
	Threshold / Ratio	-40db to +6db/1:1 infinity
	Delay	MAX300ms
USB	Driver	CH340 (USB A)
	USBA	USB Disk
	Stereo Record	2 channels (wav/mp3) 48KHz 24
	Stereo Playback	2 channels (WAV/MP3) 32-96KHz, 16-24bit
USB Audio	USB Audio Streaming	USB B
	Send (upstream)	8 channels WAV, 32KHz-96KHz 24bit
	Return (downstream)	8 Channels WAV, MP3, 48KHz, 24Bit
Power	100-240VAC,50-60HZ, 150W	

Digital Audio Mixing Console

M 24DS

Input	Mic/Line Inputs: 1-24(Local)	Balanced, XLR and 1/4" TRS Jack
	Input Sensitivity (XLR/ TRS)	XLR:6mv TRS:7mv
	Input electron gain	-32db To 10db, 0.6-0.7 Steps
	Maximum Input Level (XLR / TRS)	+23dBu
	Input Impedance (XLR / TRS)	MIC>10KΩ, LINE>5KΩ
	Mic Stereo Line Inputs	YES
	Parameters linked	EQ, Dynamics, insert, delay, assignments, sends, Ducker
	Polarity	Normal/Reverse
	Stereo Line Inputs	
	ST1/ST2	Lotus socket
	ST3 connector	USB B Streaming, U Disk, S/PDIF
	Input Sensitivity	Nominal 4dB
	Analog Gain	-32db To 10db, 0.6-0.7 Steps
	Maximum Input Level	+29dB
	Input Impedance	>7KΩ
	Stereo linked	Yes
Outputs	Mix1-14 and LR Out(Local)	Balanced, XLR, L/R, 4SUB, 10AUX
	Output Impedance	<75 Ω
	Nominal Output	=+4dbu=0db meter reading
	Residual Output Noise	=-91dbu
	Mix insertion	Assign FX to the mix channel
	Dynamic Range	<=115dB
	S/N Ratio	XLR=> 92db, TRS=> 82dB
	Maximum Output Level	4VAC MAX
	THD	<0.018% (1Khz Full Power)
	Frequency Response	20HZ-20KHZ +/- 0.5db
	Sampling Rate	48KHz ± 100PPM
	ADC/DCA	24bit Delta-sigma
	FX	Internal FX
Types		Reverbs, Delays, Gated Reverb, ADT
4dedicated Stereo FX returns		Fader, Pan, Mute, Routing to Mix/LR, 5-Band PEQ
System	Linux system	Chinese or English

Control	Faders	ALPS 100mm motorised
	Touch Screen	10.1" TFT, 1280x800 resolution
	DCA Groups	Eight
	Mute Groups	Eight
	Network	TCP/IP Ethernet for PC and iOS apps
	System Update	USB disk
	Wire connected	Windows PC software connected
	Wireless connected	Windows PC/iPad/android
Input Processing	Source	Local CH1-CH24, ST1ST2 Local ST3 digital
	EQ	5-Band EQ, (20HZ-20KHZ) ±12dB, Q 0.3~15 available
	High and low pass	12db/24db, (BT/BS/LRK), 20HZ-20KHZ
	Noise gate	Through the switch
	Gate threshold	-135db to -40db
	Attack /release	50us-30ms/10ms-5s
	Compressor	Through the switch
	Threshold / Ratio	-40db to +6db/1:1 infinity
	Delay	MAX40ms
	Remote Extension	Input 1-16, output 1-8. FX1/2
Output Processing	Output channels	LR, 4SUB, 10AUX
	EQ	15 Bands EQ, (20HZ-20KHZ) +12dB, Q0.3~15 available
	High and low pass	12db/24db, (BT/BS/LRK), 20HZ-20KHZ
	Compressor	Through the switch
	Threshold / Ratio	-40db to +6db/1:1 infinity
	Delay	MAX300ms
USB	Driver	CH340 (USB A)
	USBA	USB Disk
	Stereo Record	2 channels (wav/mp3) 48KHz 24
	Stereo Playback	2 channels (WAV/MP3) 32-96KHz, 16-24bit
USB Audio	USB Audio Streaming	USB B
	Send (upstream)	8 channels WAV, 32KHz-96KHz 24bit
	Return (downstream)	8 Channels WAV, MP3, 48KHz, 24Bit
Power	100-240VAC,50-60HZ, 150W	

Digital Audio Mixing Console

M 32DS

Input	Mic/Line Inputs: 1-32(Local)	Balanced, XLR and 1/4" TRS Jack
	Input Sensitivity (XLR/ TRS)	XLR:6mv TRS:7mv
	Input electron gain	-32db To 10db, 0.6-0.7 Steps
	Maximum Input Level (XLR / TRS)	+23dBu
	Input Impedance (XLR / TRS)	MIC>10KΩ, LINE>5KΩ
	Mic Stereo Line Inputs	YES
	Parameters linked	EQ, Dynamics, insert, delay, assignments, sends, Ducker
	Polarity	Normal/Reverse
	Stereo Line Inputs	
	ST1/ST2	Lotus socket
	ST3 connector	USB B Streaming, U Disk, S/PDIF
	Input Sensitivity	Nominal 4dB
	Analog Gain	-32db To 10db, 0.6-0.7 Steps
	Maximum Input Level	+29dB
	Input Impedance	>7KΩ
	Stereo linked	Yes
Outputs	Mix1-14 and LR Out(Local)	Balanced, XLR, L/R, 4SUB, 10AUX
	Output Impedance	<75 Ω
	Nominal Output	=+4dbu=0db meter reading
	Residual Output Noise	=-91dbu
	Mix insertion	Assign FX to the mix channel
	Dynamic Range	<=115dB
	S/N Ratio	XLR=> 92db, TRS=> 82dB
	Maximum Output Level	4VAC MAX
	THD	<0.018% (1Khz Full Power)
	Frequency Response	20HZ-20KHZ +/- 0.5db
	Sampling Rate	48KHz ± 100PPM
	ADC/DCA	24bit Delta-sigma
	FX	Internal FX
Types		Reverbs, Delays, Gated Reverb, ADT
4dedicated Stereo FX returns		Fader, Pan, Mute, Routing to Mix/LR, 5-Band PEQ
System	Linux system	Chinese or English

Control	Faders	ALPS 100mm motorised
	Touch Screen	10.1" TFT, 1280x800 resolution
	DCA Groups	Eight
	Mute Groups	Eight
	Network	TCP/IP Ethernet for PC and iOS apps
	System Update	USB disk
	Wire connected	Windows PC software connected
	Wireless connected	Windows PC/iPad/android
Input Processing	Source	Local CH1-CH32, ST1ST2 Local ST3 digital
	EQ	5-Band EQ, (20HZ-20KHZ) ±12dB, Q 0.3~15 available
	High and low pass	12db/24db, (BT/BS/LRK), 20HZ-20KHZ
	Noise gate	Through the switch
	Gate threshold	-135db to -40db
	Attack /release	50us-30ms/10ms-5s
	Compressor	Through the switch
	Threshold / Ratio	-40db to +6db/1:1 infinity
	Delay	MAX40ms
	Remote Extension	Input 1-16, output 1-8. FX1/2
Output Processing	Output channels	LR,14SUB, 10AUX
	EQ	15 Bands EQ, (20HZ-20KHZ) +12dB, Q0.3~15 available
	High and low pass	12db/24db, (BT/BS/LRK), 20HZ-20KHZ
	Compressor	Through the switch
	Threshold / Ratio	-40db to +6db/1:1 infinity
	Delay	MAX300ms
USB	Driver	CH340 (USB A)
	USBA	USB Disk
	Stereo Record	2 channels (wav/mp3) 48KHz 24
	Stereo Playback	2 channels (WAV/MP3) 32-96KHz, 16-24bit
USB Audio	USB Audio Streaming	USB B
	Send (upstream)	8 channels WAV, 32KHz-96KHz 24bit
	Return (downstream)	8 Channels WAV, MP3, 48KHz, 24Bit
Power	100-240VAC,50-60HZ, 150W	



DSP / Matrix Processor

Transform your audio landscape with our DSP/Matrix Processors. Elevate sound customization with advanced digital signal processing, ensuring unparalleled clarity and control. Redefine your sonic experience effortlessly.

DSP 01 | Digital Effect Processor

The DSP 01 is a cutting-edge audio processor equipped with an ADI 28-/56-bit DSP algorithm chip, providing a 192K sampling rate and supporting 5.1 channel audio (main stereo, subwoofer, center, and rear stereo). The front panel features a 2.0-inch TFT color screen with dual-language support (English and Chinese), allowing users to visualize volume parameters, microphone inputs, and music levels. This device offers 8 built-in factory effect modes, with customization options to suit specific needs. Its advanced audio decoding chip supports USB playback, optical and coaxial input, and Bluetooth 5.1 protocol, delivering high-quality, low-latency Hi-Res audio processing. Additionally, the DSP 01 includes professional reverb echo algorithms compatible with various microphones, ensuring high vocal resolution and low distortion. The device also features feedback suppression, noise gate, power on/off protection, and panel lock functions.



DSP 01



Software Included

DSP 01

DSP Algorithm Chip	ADI 28-/56-bit
Sampling Rate	192K
Supported Channels	5.1 (main stereo, subwoofer, center, rear stereo)
Parameter Adjustments	PEQ, HPF, LPF, Phase
Display	2.0-inch TFT color screen, English and Chinese
Built-in Effect Modes	8 factory modes, customizable
Audio Decoding Chip	Supports USB playback, optical, coaxial input, Bluetooth 5.1
Audio Processing Quality	Hi-Res, low latency
Reverb Echo Algorithm	Professional, supports various microphones
Feedback Suppression	Yes
Noise Gate	Yes
Power On/Off Protection	Yes
Panel Lock	Yes
Frequency Response	20Hz-20kHz @ +4dBu: +0/-0.3dB
Total Harmonic Distortion	<0.08% (20Hz-20kHz @ +4dBu)
Signal-to-Noise Ratio	98dB @ +4dBu A-weighted
Noise Level	90uV
Channel Separation	<-101dB @ +4dBu
EQ Gain Range	±18dB
Input Impedance (Balanced/Unbalanced)	Bal: 20K / Unbal: 10K
Output Impedance (Balanced/Unbalanced)	Bal: 100ohm / Unbal: 50ohm
Max Microphone Input Level	200mVrms / Peak 70mVrms
Max RCA Input Level	1.7Vrms / Peak 450mVrms
Max Output Level	2.5Vrms
Power Consumption	220V - 10 watts

DSP / Matrix Processor

DSP 02 | Digital Effect Processor

DSP 02 provides two microphone inputs with independent volume and sensitivity adjustment, and an infrared receiver for remote control. It has an LCD HD display for detailed parameter adjustments and status. The panel includes a MUTE button for one-click muting of output channels and a UV level light for visualizing the audio level of the main output's left and right channels. Equipped with Bluetooth 3.0 for connecting to mobile devices, it supports fiber optic input with a 32-bit high sampling rate decoding chip for low latency, lossless playback. Other features include USB drive MP3 playback, PC-LINK for online debugging, RS-232 serial port for central control, and programming with a robust construction weighing 4.5kg.



DSP 02



Software Included

DSP 02

Music Part	
Signal to Noise Ratio (SNR)	≥80dB
Distortion (THD)	≤0.6% (Output XLR 1Vrms @ 1kHz)
Frequency Response	10Hz - 20kHz ±3.0dB
Input Sensitivity/Impedance	350 ± 10% mV / 20kΩ
Maximum Output	≥ 2.5Vrms XLR Out / ≥ 6.0Vpp XLR Out
Microphone Part	
Signal to Noise Ratio (SNR)	≥80dB
Distortion (THD)	≤0.8% (Output XLR 1Vrms @ 1kHz)
Frequency Response	100Hz - 20kHz ±3.0dB
Input Sensitivity/Impedance	50 ± 10% mV / 20kΩ
Maximum Output	≥ 2.5Vrms XLR Out / ≥ 6.0Vpp XLR Out
Other Function Description	
Microphone Input Interface	6.35mm (5 Mic Sockets)
Computer Control Interface	RS232/USB
Power Supply	AC 220V/50Hz
Total Weight	4.5kg
Product Size	485 (L) x 230 (W) x 44.5 (H) mm
Additional Features	5.1 Decoding, Dual Mic Adjustment, EQ

EQ 231 | Advanced Analog 31-Band Dual Channel Equalizer

EQ 131 | Advanced Digital 31-Band Dual Channel Equalizer

The EQ 231 is an analog equalizer featuring TRS or XLR differential balancing input and output, with the option for stereo or subwoofer synthesis by adding left and right channels. Both channels have a x10 range selection switch and a 40Hz high pass filter. Each output includes a phase reversal switch. The device offers independent adjustment of average output power across all frequency bands and employs a 24dB/Linkwitz Reiley filter. It includes a stereo/mono status indicator LED to display the selected working mode.

The EQ 131, featuring advanced 31 bands DSP digital processor technology, excels in high-quality audio input and output processing, significantly outperforming traditional manually adjustable

equalizers. Ideal for professional settings such as radio stations, recording studios, and home theaters, this unit boasts a sleek 1U standard slim rack design. It offers dual-channel synchronous control with precise 31-band EQ equalization and LED spectrum indicators, ensuring clear pitch visualization during use. The EQ 131's standout feature is its real-time 31-band frequency point hopping, achieving 99% spectral accuracy. This, coupled with an efficient noise gate for superior noise reduction and various input/output interfaces like TRS6.35/RCA Lotus/XLR Cannon balanced interface, makes it a robust tool for audio enhancement. The device also includes an EQ bypass option, can store up to 10 user-defined modes, and is powered by a 220V supply.



EQ 231



EQ 131

	EQ 231	EQ 131
Type	Analog Equalizer	Digital Equalizer
Input/Output Interface	TRS, XLR	TRS6.35/RCA Lotus/XLR Cannon
Channels	Stereo/Subwoofer Synthesis	Dual Channel Synchronous Control
Frequency Bands	2x31 1/3rd Octave	2 x 31 band 1/3 Octave
High Pass Filter	40Hz	N/A
Phase Reversal Switch	Yes	N/A
Filter Type	24dB/Linkwitz Reiley	DSP Digital Analog Integration
Status Indicator	Stereo/Mono LED	LED Spectrum Indicator
Input Impedance	20k Unbalanced, 40k Balanced	15K Ω (Line)
Output Impedance	330Ω Typical	300 Ω (Line)
Frequency Response	20kHz~200kHz	20Hz~20kHz
Signal to Noise Ratio	-102 dB	82dB
Harmonic Distortion	<0.005%	N/A
Channel Isolation	>50dB	N/A
Adjustment Range	+/-12 dB	N/A
Maximum Output Level	+21 dB	N/A
Power Supply	100 ~ 120/60Hz or 200 ~ 240/50Hz	220V
Size	482x150x132mm	482x45x132mm
Power Consumption	N/A	30W
Special Features	N/A	99% Spectral Accuracy, Noise Gate

DSP / Matrix Processor

DR 08 | Advanced 8-Channel Audio Processor

DR 16 | Advanced 16-Channel Audio Processor

Introducing the DR 88 and DR 1616, advanced intelligent mixing media matrix devices designed to offer unparalleled audio management for various applications. The DR 88 features 8 inputs and 8 outputs, while the DR 1616 provides 16 inputs and 16 outputs. Both models come equipped with USB sound cards for easy recording and playback via PC software. With features like 48V phantom power, auto gain control, noise suppression, and extensive EQ settings on each input and output channel, these devices ensure superior audio quality and flexibility. The Ethernet network control interface allows for easy configuration and real-time monitoring of up to 30 devices simultaneously, making system management seamless and efficient.



 Software Included



DR 08



DR 16

	DR 08	DR 16
Sampling Rate	48kHz, ±100ppm	48kHz, ±100ppm
Quantization Number	24 bits	24 bits
Frequency Response	(20~20kHz): ±0.5dB	(20~20kHz): ±0.5dB
System Delay	Phantom Power Supply: +48V/10mAmax	Phantom Power Supply: +48V/10mAmax
Maximum Level	+18dBu	+18dBu
Input Gain	0/6/12/18/24/30/36/42/48 dB	0/6/12/18/24/30/36/42/48 dB
Input Channels	8 balanced Phoenix ports	16 balanced Phoenix ports
Output Channels	8 balanced Phoenix ports	16 balanced Phoenix ports
Input Dynamic Range	110dB	110dB
Output Dynamic Range	110dB	110dB
Input Impedance (Balanced)	5.4KΩ	5.4KΩ
Output Impedance (Balanced)	600Ω	600Ω
Channel Isolation	@1kHz: 108dB	@1kHz: 108dB
Total Harmonic Distortion + Noise	0.002%@+4dBu	0.002%@+4dBu
Working Power Supply	AC220V, 50Hz	AC220V, 50Hz

DSP / Matrix Processor

DMX 88 | DSP Matrix 8 Input 8 Output

DMX 1616 | DSP Matrix 16 Input 16 Output

The DMX 88 and DMX 1616 are versatile audio matrix processors that offer robust audio management with 8 and 16 analog inputs and outputs, respectively. These models are equipped with advanced features such as built-in USB sound cards for playback and recording, comprehensive AEC and AFC for echo and feedback suppression, and noise reduction. The devices support up to 8 devices online simultaneously and come with 12-band parametric EQ, GPIO, and extensive control options via RS232, RS485, and UDP protocols. The intuitive PC software interface allows for easy configuration and real-time monitoring, ensuring efficient and effective audio management in various environments.



 Software Included



DMX 88



DMX 1616

	DMX 88	DMX 1616
Processor	ADI SHARC 21489	ADI SHARC 21489
Sampling Rate	48kHz, 24bit	48kHz, 24bit
DSP Floating-Point Arithmetic Engine	40bit	40bit
Input Channels	8 analog	16 analog
Output Channels	8 analog	16 analog
Input Gain	0/3/6/9/12/15/18/21/24/27/30/33/36/39/42/45/48 dBu	0/3/6/9/12/15/18/21/24/27/30/33/36/39/42/45/48 dBu
Phantom Power Supply	+48V/10mA max	+48V/10mA max
Frequency Response	(20~20kHz): ±0.3dB	(20~20kHz): ±0.3dB
Maximum Level	+18dBu	+18dBu
THD+N	-94dB @17dBu	-94dB @17dBu
Input Dynamic Range	110dB	110dB
Output Dynamic Range	112dB	112dB
Channel Isolation	@1kHz: -108dB	@1kHz: -108dB
Input Impedance (Balanced)	5.4KΩ	5.4KΩ
Output Impedance (Balanced)	600Ω	600Ω
System Delay	<3ms	<3ms
Working Power Supply	AC110~240V, 50Hz/60Hz	AC110~240V, 50Hz/60Hz
Dimensions (W x D x H)	482 x 260 x 45mm	482 x 260 x 45mm
Shipping Weight	4KG	4KG

DSP / Matrix Processor

DMX 88D | DSP Matrix 8 Input 8 Output DANTE

DMX 1616D | DSP Matrix 16 Input 16 Output DANTE

The DMX 88D and DMX 1616D extend the capabilities of the DMX series with the addition of Dante networking capabilities, offering 8 and 16 Dante inputs and outputs alongside their analog counterparts. These models feature advanced DSP processing, including comprehensive AEC, AFC, and noise suppression, along with 12-band parametric EQ and automatic gain sharing. With robust control options via RS232, RS485, and UDP, as well as support for up to 8 devices online, the DMX 88D and DMX 1616D are ideal for complex audio setups requiring high-quality, low-latency networked audio.



 Software Included



DMX 88D



DMX 1616D

	DMX 88D	DMX 1616D
Processor	ADI SHARC 21489	ADI SHARC 21489 x2
Sampling Rate	48kHz, 24bit	48kHz, 24bit
DSP Floating-Point Arithmetic Engine	40bit	40bit
Analog Input Channels	8	16
Analog Output Channels	8	16
Dante Input Channels	8	16
Dante Output Channels	8	16
Input Gain	0/3/6/9/12/15/18/21/24/27/30/33/36/39/42/45/48 dBu	0/3/6/9/12/15/18/21/24/27/30/33/36/39/42/45/48 dBu
Phantom Power Supply	+48V/10mA max	+48V/10mA max
Frequency Response	(20~20kHz): ±0.3dB	(20~20kHz): ±0.3dB
Maximum Level	+18dBu	+18dBu
THD+N	-94dB @17dBu	-94dB @17dBu
Input Dynamic Range	110dB	110dB
Output Dynamic Range	112dB	112dB
Channel Isolation	@1kHz: -108dB	@1kHz: -108dB
Input Impedance (Balanced)	5.4KΩ	5.4KΩ
Output Impedance (Balanced)	600Ω	600Ω
System Delay	<3ms	<6ms
Working Power Supply	AC110~240V, 50Hz/60Hz	AC110~240V, 50Hz/60Hz
Dimensions (W x D x H)	482 x 260 x 45mm	482 x 260 x 45mm
Shipping Weight	4KG	4KG

DSP / Matrix Processor

DMX 3232D | DSP Matrix 32 Input 32 Output DANTE

Navigate diverse audio landscapes effortlessly, from boardrooms to concert halls. Tailor your sonic masterpiece with 32 inputs and 32 outputs, utilizing Dante's robust network audio capabilities. This version transforms venues into immersive audio experiences. Equipped with advanced ADI SHARC 21489 processors, the DSP Matrix series offers unparalleled audio processing with a 40-bit DSP floating-point engine. Key features include configurable processing modules, 12-band parametric EQ with multiple filters, adaptive echo cancellation, and a built-in USB sound card for music playback, recording, and soft video conferencing. Experience high-resolution, low-latency audio that enhances every sound detail.



 Software Included



DMX 3232D

DMX 3232D

Dante Input Channels	32
Dante Output Channels	32
Processor	ADI SHARC 21489 @ 450 MHz SIMD
DSP Processing Capability	400 MIPS, 1.6 GFLOPS
Sampling Rate	48 kHz, ± 100 ppm
THD+N	< -94dB @17dBu
Input Dynamic Range	110dB
Output Dynamic Range	112dB
Configurable Processing Modules	Yes, can be freely modified / altered according to requirements
Simultaneous Online Operation	Up to 8 devices simultaneously
Built-in USB Sound Card	Yes, supports music playback, recording, and software video conferencing (e.g., ZOOM, Tencent Meeting, DingTalk Meeting, etc.)
Bus AEC	Tail time: 512ms, Convergence rate: 60dB/s, Echo cancellation depth: 60dB
Independent Channel AFC	Trap wave algorithm, Gain enhancement: 10dB
Noise Suppression (ANS)	Signal-to-noise ratio improvement: 18dB
Ducker	Yes
Noise Gain Compensation (ANC)	Yes
Gain-Shared Automatic Mixing (AMC)	Yes
Gate Mixer	Yes
12-Band British Parametric EQ	Yes, with 5 filter type selections: Parametric, Lowshelf, Highshelf, Lowpass, Highpass
Customizable User Interface	Yes, supports up to 30 devices with the same interface management
Camera Tracking	Yes
GPIO Channels	8
Central Control	Yes, supports RS232, RS485, UDP for overall control of power, signal switching, environmental control, audio, etc. with one-button system activation
Input/Output Quantity	Dante: 32x32
A/D Dynamic Range	Not less than 110dBu
D/A Dynamic Range	Not less than 110dBu
Total Harmonic Distortion (THD+N)	Not less than 0.001% @1kHz, +4dBu
Dimensions	482 x 260 x 45mm
Weight	4KG

DMX 01CP | Advanced Control Wall Panel

DMX 02CP | Interactive Touch Wall Controller

The DMX 01CP and DMX 02CP are advanced control panels designed to integrate seamlessly with DSP systems of the same brand. The DMX 01CP features a 1.13-inch control panel with a minimum of 32 customizable menu functions and a rotary knob, utilizing the UDP communication protocol and powered by PoE. The DMX 02CP boasts a 4-inch touch screen with a resolution of 480x480, supporting a minimum of 32 control functions including volume control, mute, scene recall, matrix switching, and central control functionalities. It uses the RS-485 communication protocol and is powered by +12VDC. Both panels support user customization and offer versatile installation options, either in-wall or surface-mounted.



DMX 01CP



DMX 02CP

	DMX 01CP	DMX 02CP
Screen Size	1.13 inches	4 inches
Resolution	N/A	480x480
Control Functions	=>32, with rotary knob	=>32, touch screen
Communication Protocol	UDP	RS-485
Address Setting	TCP/IP	N/A
Signal Cable Length	100 meters	100 meters
Power Supply	PoE	+12VDC
Connection Port	RJ-45	4-pin Phoenix connector
Power Consumption	<100mW	<100mW
Compatible with	All series processors	NLP series processors
Color	White	Grey
Material	Aluminum alloy, sandblasted	N/A
Mounting Options	In-wall or surface-mounted	In-wall or surface-mounted
Display Type	OLED, capacitive touch	TFT, capacitive touch
Password Protection	N/A	Yes

DMX 03CP | Smart Multi-Device Wall Manager

The DMX 03CP is an 8-inch Android touchscreen controller designed for centralized control of up to 32 devices. It offers comprehensive management of DSP functionalities such as volume, mute, presets, matrix mixing, and device status detection, with user-customizable functions. Utilizing the UDP communication protocol and featuring a high-resolution IPS display, this controller ensures clear visuals and reliable performance. It is powered via PoE or DC 12V, making it versatile and easy to integrate with DSP systems of the same brand.



DMX 03CP

DMX 03CP

Screen Size	8 inches
Color	Black
Screen Type	IPS
Resolution	1280x800
Brightness	250cd/m ²
System	Android 8.1
Main Chip	Quad-core Cortex-A17, RockChip RK3288
Memory	2GB
Storage	16GB
Contrast Ratio	33.334
Aspect Ratio	0.673
Power Input	DC 12V 1.5A & PoE IEEE802.3AT
Product Dimensions	212.2 x 147.6 x 31mm
Product Weight	0.7kg

DMX 04CP | Bluetooth Wall Controller

The DMX 04CP is a versatile wall panel that supports the conversion of Bluetooth or stereo signals to Dante/AES67 network digital signals, with Bluetooth signals given the highest priority. It is powered by PoE and is designed for installation in a standard 86 mounting box. The panel connects to devices like smartphones and iPads via Bluetooth, converting the received audio into network digital signals for transmission. With PoE power and audio transmission over a single Ethernet cable, the DMX 04CP ensures easy wiring and stable transmission. A touch button on the panel controls Bluetooth pairing and displays the connection status. The device also supports changing the Bluetooth name.



DMX 04CP

DMX 04CP

Bluetooth Channels	2
Dante Channels	2
Stereo Channels	2
Sampling Rate	48kHz
Bit Depth	24bit
Power Supply	Class 1 802.3af PoE
Device Latency	<2ms

DSP / Matrix Processor

SMS 24 | Loudspeaker Management System

SMS 36 | Loudspeaker Management System

SMS 48 | Loudspeaker Management System

The SMS Series Loudspeaker Management System is a high-performance DSP processor supporting multi-channel analog signal routing. Easily controlled via USB or IP, the user-friendly PC interface provides intuitive control. Input channels feature 5-band DEQ, 31-band GEQ, and 15-band PEQ, while output channels include 15-band PEQ with FIR functionality, limiters, and noise gates. With 30 factory presets and customizable configurations, it caters to diverse audio systems. Powered by the ADSP-21571 DSP processor and AK5552 A/D converter, it ensures high-resolution signal processing with a 118dB SNR. The AD1955 DAC provides 24-bit, 192kHz output with a 120dB SNR, meeting the demands of mainstream audio playback.



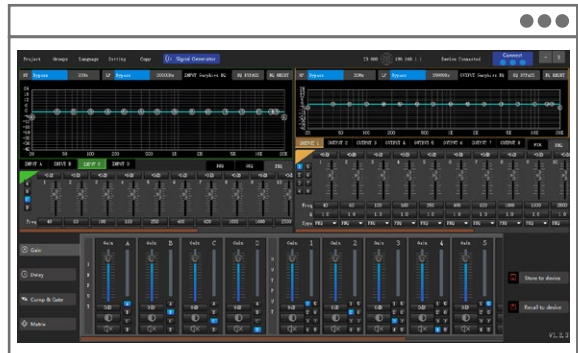
SMS 24



SMS 36



SMS 48



Software Included

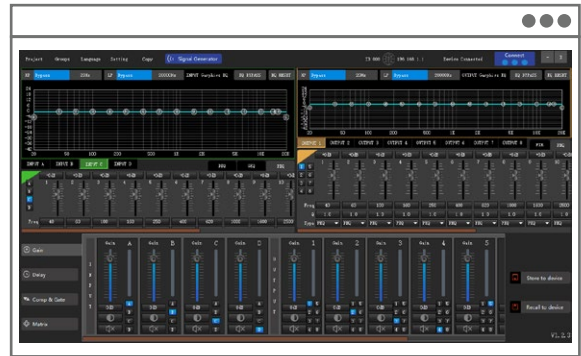
DSP / Matrix Processor

	SMS 24	SMS 36	SMS 48
Input Channels	2 (Balanced)	3 (Balanced)	4 (Balanced)
Output Channels	4 (Balanced)	6 (Balanced)	8 (Balanced)
Frequency Response	+0/-0.3dB (20Hz-20kHz@+4dBu)	+0/-0.3dB (20Hz-20kHz@+4dBu)	+0/-0.3dB (20Hz-20kHz@+4dBu)
Total Harmonic Distortion	<0.003% (20Hz-20kHz@+4dBu)	<0.003% (20Hz-20kHz@+4dBu)	<0.003% (20Hz-20kHz@+4dBu)
Signal-to-Noise Ratio	110dB A-weighted	110dB A-weighted	110dB A-weighted
Dynamic Range	>116dB (20Hz-20kHz, 0dB)	>116dB (20Hz-20kHz, 0dB)	>116dB (20Hz-20kHz, 0dB)
Max Gain (Input to Output)	48dB	48dB	48dB
Max Delay (Input to Output)	750ms	750ms	750ms
Channel Separation	>80dB (Between channels @1kHz)	>80dB (Between channels @1kHz)	>80dB (Between channels @1kHz)
Common Mode Rejection Ratio	60Hz >100dB @+20dBu	60Hz >100dB @+20dBu	60Hz >100dB @+20dBu
Input Impedance	Balanced: 20K / Unbalanced: 10K	Balanced: 20K / Unbalanced: 10K	Balanced: 20K / Unbalanced: 10K
Output Impedance	Balanced: 100Ω / Unbalanced: 50Ω	Balanced: 100Ω / Unbalanced: 50Ω	Balanced: 100Ω / Unbalanced: 50Ω
Max Input Level	+20dBu	+20dBu	+20dBu
Max Output Level	+20dBu	+20dBu	+20dBu
Input Gain Range (Adjustable)	-80dB ~ +12dB	-80dB ~ +12dB	-80dB ~ +12dB
Output Gain Range (Adjustable)	-80dB ~ +12dB	-80dB ~ +12dB	-80dB ~ +12dB
A/D Chip	AK5552	AK5552	AK5552
A/D Sampling Rate	768kHz	768kHz	768kHz
A/D Converter Bit Width	32bit	32bit	32bit
D/A Chip	AD1955	AD1955	AD1955
D/A Sampling Rate	192kHz	192kHz	192kHz
D/A Converter Bit Width	24bit	24bit	24bit
DSP Chip	ADSP-21571	ADSP-21571	ADSP-21571
DSP Frequency	500MHz	500MHz	500MHz
DSP Bit Width	32/40/64-bit Floating Point, Dual-core SHARC+ ARM Cortex-A5TM	32/40/64-bit Floating Point, Dual-core SHARC+ ARM Cortex-A5TM	32/40/64-bit Floating Point, Dual-core SHARC+ ARM Cortex-A5TM
Power Consumption	220V 22W	220V 22W	220V 22W

DSP / Matrix Processor

SMS 36S | Enhanced Loudspeaker Management System SMS 48S | Enhanced Loudspeaker Management System

Introducing our Loudspeaker Management System, a powerful addition to our DSP/Matrix Processor category. This series embodies cutting-edge technology to optimize and control audio signals with precision. Tailor your sound experience effortlessly, from equalization and filtering to seamless distribution, ensuring unparalleled audio quality and clarity. Elevate your audio setup with our state-of-the-art Loudspeaker Management System, designed for maximum control and performance in diverse environments.



 Software Included



SMS 36S



SMS 48S

	SMS 36S	SMS 48S
Frequency Response	20Hz-20kHz@+4dBu: +0/-0.3dB	20Hz-20kHz@+4dBu: +0/-0.3dB
Total Harmonic Distortion	<0.003%	<0.003%
Signal-to-Noise Ratio	110dB A weighting	110dB A weighting
Ground Noise	< -90dBu	< -90dBu
Dynamic Range	>116 dB	>116 dB
Maximum Gain (Input to Output)	48dB	48dB
Maximum Delay (Input to Output)	750ms	750ms
Channel Separation	>80dB @ 1kHz between channels	>80dB @ 1kHz between channels
Common-Mode Rejection Ratio	60Hz > 100dB@ +20dBu	60Hz > 100dB@ +20dBu
Input Impedance (Bal/Unbal)	Bal: 20K / Unbal: 10K	Bal: 20K / Unbal: 10K
Output Impedance (Bal/Unbal)	Bal: 100Ω / Unbal: 50Ω	Bal: 100Ω / Unbal: 50Ω
Maximum Input Level	+20dBu	+20dBu
Maximum Output Level	+20dBu	+20dBu
Input Gain Range	-80dB ~ +12dB	-80dB ~ +12dB
Output Gain Range	-80dB ~ +12dB	-80dB ~ +12dB
A/D Chip	AK5552	AK5552
A/D Sampling Rate	768kHz	768kHz
A/D Converter Bit Width	32bit	32bit
D/A Chip	AD1955	AD1955
D/A Sampling Rate	192kHz	192kHz
D/A Converter Bit Width	24bit	24bit
DSP Chip	ADSP-21571	ADSP-21571
DSP Master Frequency	500MHz	500MHz
DSP Bit Width	32/40/64-bit floating point	32/40/64-bit floating point
Input/Output Configuration	3 Inputs, 6 Outputs	4 Inputs, 8 Outputs

AFS 0201 | Advanced 2-channel Feedback Destroyer

The AFS 0201 utilizes advanced echo cancellation and reverb elimination algorithms to effectively filter out room reverb and prevent acoustic feedback. By adding inaudible noise to the output signal or varying the frequency by 5 Hz, the feedback suppressor can detect and remove components causing reverb before feedback occurs, while preserving the original signal. It features 2 channels of balanced line/mic inputs or selectable 2-channel 6.35mm unbalanced inputs, with a 24V phantom power module for powering up to 2 microphones. The AFS 0201 automatically adapts to acoustic environments without the need for manual adjustment, offering up to 12dB gain while maintaining excellent performance even with multiple microphones in use.



AFS 0201

Input Channels	2 channels (balanced line/mic or 6.35mm unbalanced)
Phantom Power	2 channels, 24V
Rated Voltage	AC-220V±10% 50Hz/60Hz
Frequency Response	125Hz~15KHz
Distortion	<0.1% @ 1KHz
Signal-to-Noise Ratio	>90dB
Input Impedance	20KΩ
Output Impedance (Balanced)	200Ω
Temperature Range	-10~55 °C
Weight	3.5kg
Dimensions	480×220×44mm

DSP / Matrix Processor

AFS 0202 | 2-channel Feedback Destroyer

The AFS 0202 features new DSP digital processing technology, providing automatic feedback suppression with high sound quality. Ideal for conference rooms, multipurpose halls, small performances, KTV rooms, and home theaters, it has a 2-in/2-out design with volume control and new rotary indicator lights for easy volume monitoring. The unit includes multiple input and output options (XLR and 6.5mm), with each channel equipped with frequency indicators and an automatic feedback suppression mode upon startup. Utilizing a DSP chip with 68 filter points for dynamic filtering, the AFS 0202 ensures sound quality is preserved while preventing feedback.



AFS 0202

Power Supply	220V
Transmission Gain	-1dB or 11dB
Line Input Impedance	15k Ω
Line Output Impedance	300 Ω
Frequency Response	80Hz-15KHz
Signal-to-Noise Ratio	82dB
Design	2-in/2-out
Volume Control	Yes, with rotary indicator lights
Indicator Light Colors	Green (normal), Yellow (distortion warning), Red (danger)
Input/Output Connectors	XLR and 6.5mm
Automatic Feedback Suppression	Yes
DSP Processing	68 filter points, dynamic filtering
Filter Recovery	2 seconds
Automatic Compression	Yes, to prevent signal overload and distortion

AFS 0802 | 8-channel Feedback Destroyer

Introducing the Feedback Destroyer an advanced solution in the AFS 0802 lineup designed to combat feedback issues in live sound environments. This robust unit features eight input channels with composite XLR female interfaces, each equipped with individual MIC1-MIC8 input potentiometer adjustments and 48V phantom power supply switches. Unique to this model, MIC8 offers a switch to toggle between feedback suppression mode and a bypass mode.

In bypass mode, outputs are routed exclusively through the LINE line and system interface. The "Destroyer" boasts impressive input and output impedance levels, ensuring optimal signal integrity. It comes with a high SNR of over 95db (A weighting), ensuring clear, noise-free performance. Each channel's sensitivity can be finely tuned from -30db to 56db. The frequency response varies, offering a range of 120hz-15khz in feedback suppression mode and a full 20Hz-20kHz in through mode. The unit's power consumption is economical at 50W. A 1.77" color screen on the panel displays current working status and supports both Chinese and English menu displays, making it user-friendly and versatile. Additionally, the panel features MIC1-MIC8 input level debugging lights, assisting in achieving standard microphone input levels. The Destroyer is a powerhouse, adept at managing feedback while maintaining audio clarity and ease of use.



AFS 0802

Power Input Mode	AC220V/50HZ
Input Channels	8 Channels with Composite XLR Female Interfaces
Phantom Power	48V Phantom Power Supply Switch per Channel
Feedback Suppression Switch	Available on MIC8
Input Impedance	MIC Balanced: 68KO, MIC Unbalanced: 10KO, LINE Input: 10KO, MUSIC Input: 10KO
Output Impedance	System XLR: 1 KO, LINE Output: 2KO, REC Output: 2KO
Signal-to-Noise Ratio (SNR)	> 95db (A weighting)
Input Sensitivity	MIC1-MIC8: -30db-56db
Frequency Response	Feedback Mode: 120hz-15khz, Through Mode: 20Hz-20kHz
Power Consumption	50W
Display	1.77" Color Screen, Supports Chinese and English
Additional Features	Fade Out Function, Power Protection, Input Level Debugging Lights



Premium Audio Power Amplifier

Ignite your audio with our Audio Power Amplifiers. Unleash raw, undistorted power for an immersive sonic experience. Elevate your sound to new heights with precision and clarity.

LA 101 | 2 x 200W Premium Audio Power Amplifier

LA 102 | 2 x 400W Premium Audio Power Amplifier

LA 103 | 2 x 600W Premium Audio Power Amplifier

LA 104 | 2 x 800W Premium Audio Power Amplifier

LA 105 | 2 x 1300W Premium Audio Power Amplifier

LA 106 | 2 x 1600W Premium Audio Power Amplifier

Introducing our LA Series Premium Audio Power Amplifier, the pinnacle of audio amplification excellence. Designed to deliver raw, undistorted power, this series combines precision and efficiency for an immersive sound experience. The 200W, 400W, and 600W versions utilize Class AB amplification for superior audio fidelity, while the 800W, 1300W, and 1600W versions feature Class H technology for higher

efficiency and greater power handling. Whether you're powering a high-energy live performance or elevating your home entertainment setup, the LA Series ensures clarity and impact. With advanced technology and a sleek design, this premium amplifier redefines audio power, providing the perfect balance between performance and sophistication for audio enthusiasts and professionals alike.



LA 101



LA 104



LA 102



LA 105



LA 103



LA 106

Premium Audio Power Amplifier

	LA 101	LA 102	LA 103
Power	2x200W	2x400W	2x600W
Total Harmonic Distortion (THD)	THD1/2WP (20Hz-20KHz) <= 0.1%	THD1/2WP (20Hz-20KHz) <= 0.1%	THD1/2WP (20Hz-20KHz) <= 0.1%
Signal-to-Noise Ratio (SNR)	SNR WP (1KHz) > 85dB (A-weighted)	SNR WP (1KHz) > 85dB (A-weighted)	SNR WP (1KHz) > 90dB (A-weighted)
Frequency Response (8Ω 1/10 Power)	20Hz-22KHz < ±0.2dB	20Hz-22KHz < ±0.2dB	20Hz-22KHz < ±0.2dB
Crosstalk (35Hz-10KHz)	>= 50dB	>= 50dB	>= 50dB
Damping Factor (Rated Power)	>= 500	>= 500	>= 500
Amplifier Class	Class AB	Class AB	Class AB
Input Impedance	20KΩ Balanced, 10KΩ Unbalanced	20KΩ Balanced, 10KΩ Unbalanced	20KΩ Balanced, 10KΩ Unbalanced
Output Impedance	8Ω, 4Ω	8Ω, 4Ω	8Ω, 4Ω
Input Sensitivity	0.775V, 1V, 1.44V	0.775V, 1V, 1.44V	0.775V, 1V, 1.44V
Rated Power (AC 220V/50Hz)	8Ω: 2x200W 4Ω: 2x300W 8Ω Bridged: 600W	8Ω: 2x400W 4Ω: 2x600W 8Ω Bridged: 1200W	8Ω: 2x600W 4Ω: 2x900W 8Ω Bridged: 1800W
Operating Voltage	220V/50Hz or 60Hz	220V/50Hz or 60Hz	220V/50Hz or 60Hz
Dimensions	483 x 315 x 88 mm (W x D x H)	483 x 315 x 88 mm (W x D x H)	483 x 315 x 88 mm (W x D x H)
Weight	10.5 kg	12.7 kg	13.8 kg

	LA 104	LA 105	LA 106
Power	2x800W	2x1300W	2x1600W
Total Harmonic Distortion (THD)	THD1/2WP (20Hz-20KHz) <= 0.1%	THD1/2WP (20Hz-20KHz) <= 0.1%	THD1/2WP (20Hz-20KHz) <= 0.1%
Signal-to-Noise Ratio (SNR)	SNR WP (1KHz) > 90dB (A-weighted)	SNR WP (1KHz) > 90dB (A-weighted)	SNR WP (1KHz) > 90dB (A-weighted)
Frequency Response (8Ω 1/10 Power)	20Hz-22KHz < ±0.2dB	20Hz-22KHz < ±0.2dB	20Hz-22KHz < ±0.2dB
Crosstalk (35Hz-10KHz)	>= 50dB	>= 50dB	>= 50dB
Damping Factor (Rated Power)	>= 500	>= 500	>= 500
Amplifier Class	Class H	Class H	Class H
Input Impedance	20KΩ Balanced, 10KΩ Unbalanced	20KΩ Balanced, 10KΩ Unbalanced	20KΩ Balanced, 10KΩ Unbalanced
Output Impedance	8Ω, 4Ω	8Ω, 4Ω	8Ω, 4Ω
Input Sensitivity	0.775V, 1V, 1.44V	0.775V, 1V, 1.44V	0.775V, 1V, 1.44V
Rated Power (AC 220V/50Hz)	8Ω: 2x800W 4Ω: 2x1200W 8Ω Bridged: 2400W	8Ω: 2x1300W 4Ω: 2x2500W 8Ω Bridged: 2600W	8Ω: 2x1600W 4Ω: 2x2500W 8Ω Bridged: 3000W
Operating Voltage	220V/50Hz or 60Hz	220V/50Hz or 60Hz	220V/50Hz or 60Hz
Dimensions	483 x 315 x 88 mm (W x D x H)	483 x 315 x 88 mm (W x D x H)	483 x 315 x 88 mm (W x D x H)
Weight	16.5 kg	18 kg	20 kg

Premium Audio Power Amplifier





Digital Power Amplifier

Enter a new era of sound amplification with our Digital Power Amplifiers. Harness cutting-edge technology for efficient, high-fidelity audio delivery. Redefine power and clarity in your audio experience effortlessly.

- PD 1060 | Digital Power Amplifier - Compact Range**
- PD 1120 | Digital Power Amplifier - Compact Range**
- PD 1160 | Digital Power Amplifier - Compact Range**
- PD 1230 | Digital Power Amplifier - Compact Range**
- PD 1260 | Digital Power Amplifier - Compact Range**
- PD 1415 | Digital Power Amplifier - Compact Range**
- PD 1430 | Digital Power Amplifier - Compact Range**

AEX System PD 1000 Series Digital Power Amplifiers are specially designed to be a small form factor compact 100Vline power amplifier with no compromise on its output capacity. The Digital Power Amplifiers provide amplification for all audio signals after a preamplifier, digital matrix or any Network Audio Extract device. It uses a high efficiency and robust Class-D amplifier technology. The power amplifiers provide a wide frequency response, low THD+Noise and a high Signal-to-Noise ratio. The PD 1000 series uses a transformerless, technology that reduces electromagnetic noise and improves power efficiency. This results in an extremely low power consumption and a low carbon footprint product.

The compact PD Series design allows the amplifiers to require less rack space in any equipment room and application that has space constrain. The PD 1000 Series Digital Power Amplifier consist of the following 7 models; PD 1060 (600W Digital Power Amplifier), PD 1160 (1600W Digital Power Amplifier), PD 1415 (4 x 150W Digital Power Amplifier), PD 1230 (2 x 300W Digital Power Amplifier), PD 1430 (4 x 300W Digital Power Amplifier), PD 1260 (2 x 600W Digital Power Amplifier) and PD 1120 (1200W Digital Power Amplifier)



- PD 1060
- PD 1120
- PD 1160
- PD 1230
- PD 1260
- PD 1415
- PD 1430



Digital Power Amplifier

	PD 1060	PD 1120	PD 1160	PD 1230	PD 1260	PD 1415	PD 1430
Rated Output Power	1x600W	1x1200W	1x1600W	2x300W	2x600W	4x150W	4x300W
Output Voltage	100Vline / 8Ω						
Frequency Response	20 Hz to 20kHz (+1/-2dB) (High Pass Filter Off) 120 Hz to 20kHz (+1/-3dB) (High Pass Filter On)						
Total Harmonic Distortion (1kHz)	Less than 1%						
Total Harmonic Distortion (1/3 Rated)	Less than 0.05%						
Signal-to-Noise Ratio	>=105 dB						
Input Connections (per channel)	1 Balanced Program Signal Input (RJ45) with Pilot Tone						
Input Level	Balanced 0 dB						
Input Impedance	10 kΩ (balanced)						
Power Efficiency	Super High Efficiency of >92%						
Max Load Impedance (per channel)	16.6 Ω	8.3 Ω	6.25 Ω	33.3 Ω	16.6 Ω	66.6 Ω	33.3 Ω
Power Consumption	652W	1304W	1739W	652W	1304W	652W	1304W
Power Requirement	220 - 240Vac 50/60Hz or 24Vdc Backup Power						
Standby Idle Power (per channel)	Ultra Low Power Consumption of 1.2W						
Operating Temperature	-10 C to 40 C						
Storage Temperature	-40 C to 70 C						
Relative Humidity	Less than 95%						
Material & Finish	Mild Steel Casing, Epoxy Coated, Textured Black						
Dimensions	484 x 44 x 383 mm (W x H x D)						
Weight	6.9 kg	6.9 kg	6.9 kg	7 kg	7 kg	7.2 kg	7.2 kg

Digital Power Amplifier

LD 101 | 2 x 300W Digital Power Amplifier

LD 102 | 2 x 500W Digital Power Amplifier

LD 103 | 2 x 800W Digital Power Amplifier

Introducing the LD Series Digital Power Amplifier, a cutting-edge evolution in audio amplification. This series/model name embodies the fusion of advanced digital technology and powerful amplification. Offering an unparalleled combination of efficiency and precision, the LD Series redefines the audio landscape, ensuring a dynamic and crystal-clear sound experience. Whether optimizing your sound system in a professional setting or enhancing your personal audio setup, the LD Series Digital Power Amplifier stands as a testament to innovation, providing unmatched performance and clarity for discerning audio enthusiasts.



LD 101



LD 102



LD 103

	LD 101	LD 102	LD 103
Protection	Power on delay, overheat protection, overload protection, short circuit protection, DC protection, auto recovery after fault cleared	Power on delay, overheat protection, overload protection, short circuit protection, DC protection, auto recovery after fault cleared	Power on delay, overheat protection, overload protection, short circuit protection, DC protection, auto recovery after fault cleared
Input Impedance	20KΩ Balanced, 10KΩ Unbalanced	20KΩ Balanced, 10KΩ Unbalanced	20KΩ Balanced, 10KΩ Unbalanced
Frequency Response	20HZ-20KHZ	20HZ-20KHZ	20HZ-20KHZ
S/N Ratio	105dB / Distortion: <0.1%	105dB / Distortion: <0.1%	105dB / Distortion: <0.1%
Input Sensitivity	0.775V/1.0V/1.4V/	0.775V/1.0V/1.4V/	0.775V/1.0V/1.4V/
Input Level	3.75V	3.75V	3.75V
Rated Output Power	4-8 Ω Output Power 2*300W, Peak Power 400W, Bridge Power 500W	4-8 Ω Output Power 2*500W, Peak Power 600W, Bridge Power 900W	4-8 Ω Output Power 2*800W, Peak Power 900W, Bridge Power 1500W
Efficiency	Full Load Efficiency >88%	Full Load Efficiency >88%	Full Load Efficiency >88%
Power Supply	AC180V-240V 3A 47-63HZ Rated Power 700W	AC180V-240V 5A 47-63HZ Rated Power 1000W	AC180V-240V 5A 47-63HZ Rated Power 1000W
Weight	3.5KG (Net Weight)	3.6KG (Net Weight)	3.6KG (Net Weight)
Dimensions	482 x 300 x 45 mm	482 x 300 x 45 mm	482 x 300 x 45 mm

Digital Power Amplifier

LD 201 | 4 x 300W Digital Amplifier

LD 202 | 4 x 500W Digital Amplifier

LD 203 | 4 x 800W Digital Amplifier

Meet the LD Series Digital Power Amplifier. This innovative amplifier lineup fuses advanced digital technology with robust power - available in 4 x 300W, 4 x 500W, and 4 x 800W configurations to match your needs. The LD Series represents the next evolution in multi-channel amplification. With remarkable efficiency and precision, it delivers stunning clarity and dynamic range, ensuring an unparalleled listening experience. Whether optimizing a commercial sound system or personal audio setup, the LD Series stands apart. It reshapes expectations with its fusion of digital intelligence and sheer power - redefining precision amplification for discerning audio enthusiasts.



LD 201



LD 202



LD 203

	LD 201	LD 202	LD 203
Protection	Power on delay, overheat protection, overload protection, short circuit protection, DC protection, auto recovery after fault cleared	Power on delay, overheat protection, overload protection, short circuit protection, DC protection, auto recovery after fault cleared	Power on delay, overheat protection, overload protection, short circuit protection, DC protection, auto recovery after fault cleared
Input Impedance	20KΩ Balanced, 10KΩ Unbalanced	20KΩ Balanced, 10KΩ Unbalanced	20KΩ Balanced, 10KΩ Unbalanced
Frequency Response	20HZ-20KHZ	20HZ-20KHZ	20HZ-20KHZ
S/N Ratio	105dB / Distortion: <0.1%	105dB / Distortion: <0.1%	105dB / Distortion: <0.1%
Input Sensitivity	0.775V/1.0V/1.4V/	0.775V/1.0V/1.4V/	0.775V/1.0V/1.4V/
Input Level	3.75V	3.75V	3.75V
Rated Output Power	4-8 Ω Output Power 4*300W, Peak Power 400W	4-8 Ω Output Power 4*500W, Peak Power 600W	4-8 Ω Output Power 4*800W, Peak Power 900W
Efficiency	Full Load Efficiency >88%	Full Load Efficiency >88%	Full Load Efficiency >88%
Power Supply	AC180V-240V 5A 47-63HZ Rated Power 1300W	AC180V-240V 5A 47-63HZ Rated Power 2100W	AC180V-240V 5A 47-63HZ Rated Power 2100W
Weight	3.95 KG (Net Weight)	3.95 KG (Net Weight)	3.95 KG (Net Weight)
Dimensions	484 x 268 x 44 mm	484 x 268 x 44 mm	484 x 268 x 44 mm

Digital Power Amplifier

DA 8842 | 4 x 200W DSP Matrix Amplifier

DA 8844 | 4 x 400W DSP Matrix Amplifier

DA 8846 | 4 x 600W DSP Matrix Amplifier

DA 8848 | 4 x 800W DSP Matrix Amplifier

The DA 8842, DA 8844, DA 8846, and DA 8848 are powerful audio management centers equipped with 8 analog inputs and outputs, alongside four-channel Class-D amplifiers with PFC switching power supplies. These models feature advanced audio processing capabilities, including 48V phantom power, 8-band parametric EQ, noise suppression, and extensive delay and limiting options. The built-in USB sound card supports playback, recording, and video conferencing, while the Ethernet control interface allows for seamless integration with local networks and mobile devices. The intuitive PC software interface ensures easy configuration and real-time monitoring of all audio parameters, making these devices ideal for professional audio environments.



 Software Included



DA 8842



DA 8844



DA 8846



DA 8848

Digital Power Amplifier

	DA 8842	DA 8844	DA 8846	DA 8848
Sampling Rate	48kHz, ±100ppm	48kHz, ±100ppm	48kHz, ±100ppm	48kHz, ±100ppm
Quantization Number	24 bits	24 bits	24 bits	24 bits
Frequency Response	(20~20kHz): ±0.5dB	(20~20kHz): ±0.5dB	(20~20kHz): ±0.5dB	(20~20kHz): ±0.5dB
System Delay	Phantom Power Supply: +48V/10mAmax	Phantom Power Supply: +48V/10mAmax	Phantom Power Supply: +48V/10mAmax	Phantom Power Supply: +48V/10mAmax
Maximum Level	+18dBu	+18dBu	+18dBu	+18dBu
Input Gain	0/6/12/18/24/30/36/42/48 dB	0/6/12/18/24/30/36/42/48 dB	0/6/12/18/24/30/36/42/48 dB	0/6/12/18/24/30/36/42/48 dB
Input Channels	8 balanced Phoenix ports	8 balanced Phoenix ports	8 balanced Phoenix ports	8 balanced Phoenix ports
Output Channels	8 balanced Phoenix ports	8 balanced Phoenix ports	8 balanced Phoenix ports	8 balanced Phoenix ports
Input Dynamic Range	110dB	110dB	110dB	110dB
Output Dynamic Range	110dB	110dB	110dB	110dB
Input Impedance (Balanced)	5.4KΩ	5.4KΩ	5.4KΩ	5.4KΩ
Output Impedance (Balanced)	600Ω	600Ω	600Ω	600Ω
Channel Isolation	@1kHz: 108dB	@1kHz: 108dB	@1kHz: 108dB	@1kHz: 108dB
Total Harmonic Distortion + Noise	0.002%@+4dBu	0.002%@+4dBu	0.002%@+4dBu	0.002%@+4dBu
Working Power Supply	AC220V, 50Hz	AC220V, 50Hz	AC220V, 50Hz	AC220V, 50Hz
Amplifier Stereo 8 Ohms Load	200W x 4	400W x 4	600W x 4	800W x 4
Amplifier Stereo 4 Ohms Load	420W x 4	660W x 4	930W x 4	1290W x 4
Bridge Mode 8 Ohms Load	900W x 2	1400W x 2	-	-
Bridge Mode 4 Ohms Load	1650W x 2	2550W x 2	-	-
Sensitivity	1V	1V / 1.4V / 2.0V / 2.4V	1V / 1.4V / 2.0V / 2.4V	1V / 1.4V / 2.0V / 2.4V
Input Impedance (Amplifier)	Balanced input 20K, Unbalanced input 10K	Balanced input 20K, Unbalanced input 10K	Balanced input 20K, Unbalanced input 10K	Balanced input 20K, Unbalanced input 10K
THD Total Harmonic Distortion (Amplifier)	0.02%	0.02%	0.02%	0.02%
Conversion Rate	40V/USEC	40V/USEC	40V/USEC	40V/USEC
Signal to Noise Ratio	98dB	98dB	98dB	98dB
Damping Coefficient	>400	>400	>400	>400
Heat Dissipation Mode	Intelligent fan speed	Intelligent fan speed	Intelligent fan speed	Intelligent fan speed
Operating Voltage Range	100-265VAC, 50/60Hz	100-265VAC, 50/60Hz	100-265VAC, 50/60Hz	100-265VAC, 50/60Hz

Digital Power Amplifier





Power Sequencer

Experience unprecedented control with Power Sequencer, a revolutionary system offering flexible power distribution across multiple rails for enhanced efficiency. Redefine how you harness and optimize power effortlessly.

PSQ 08 | Power Sequencer

Meet our revolutionary PSQ 08 Power Sequencer, advancing our Power lineup. This sophisticated series ensures seamless, efficient power distribution - whether safeguarding delicate electronics or optimizing high-performance systems. Power Sequencer exemplifies reliability and precision, standing as a hallmark of cutting-edge power management technology. The PSQ 08 blends advanced technology with modern demands, guaranteeing smooth, uninterrupted power. It takes sophisticated power management to the next level - making Power Sequencer the pinnacle of efficiency, reliability and connectivity.



PSQ 08

Rated Output Voltage	AC 220V, 50Hz-60Hz
High-Power Circuit	Suitable for large power consumption systems
Chip Control	Ensures a stable and reliable circuit
Sockets	Universal (Accommodates various plug types)
Controllable Power Outlets	8
Delay Time for Each Outlet	1 second
Power Supply	Built-in transformer
Total Power Outlets in Use	9 (1 direct 220V on the panel, 8 controlled on the rear panel)
Independent Control Switch for Each Outlet	Yes
USB Interface	For phone charging, lighting, and various 5V digital devices
Daisy Chain Function	Allows stacking for simultaneous use in large-scale power management projects
Maximum Limit for Single Outlet Output Power	2800W
Maximum Total Output Power for the Whole Unit	6000W



Passive SR Speakers

Introducing our Passive 2-Way SR Speakers – a perfect blend of durability and audio excellence. Experience clear, immersive sound with a speaker designed for both resilience and precision.



D 8 | 8" Dynamo Series D 12 | 12" Dynamo Series
D 10 | 10" Dynamo Series D 15 | 15" Dynamo Series

Introducing the Dynamo Series 2-way Passive Speaker, a standout in our Passive 2-Way SR Speakers category. This series represents a perfect fusion of durability and superior audio quality. Ideal for various applications, the Dynamo Series Passive Speaker ensures clear and immersive sound reproduction. As a passive speaker design, it delivers reliable performance while integrating seamlessly into diverse environments, without the need for its own amplification source. Elevate your audio experience with the precision and resilience embodied by the Dynamo Series Passive 2-way Speaker, setting a new standard for versatile and high-quality sound reproduction.



D 8



D 10



D 12



D 15

Passive SR Speakers

S 8 | 8" Symphony Series S 12 | 12" Symphony Series S 10 | 10" Symphony Series S 15 | 15" Symphony Series

Introducing the Symphony Series 2-way Speaker, a standout within our category of Passive 2-Way SR Speakers. Engineered for versatility and quality, this series/model name signifies a harmonious balance between resilient design and superior audio performance. The Symphony Series guarantees clear and immersive sound reproduction, making it an ideal choice for various applications. This speaker seamlessly blends durability with aesthetic appeal, ensuring it complements diverse environments effortlessly. Immerse yourself in an enhanced audio experience as the Symphony Series 2-way Speaker sets a benchmark for reliability and quality in every setting.



S 8



S 10



S 12



S 15

Passive SR Speakers

W 8 | 8" TimberVox Series W 12 | 12" TimberVox Series
W 10 | 10" TimberVox Series W 15 | 15" TimberVox Series

Introducing the TimberVox Series 2-way Speaker, a standout within our Passive 2-Way SR Speakers. This series/model name signifies a perfect blend of timeless craftsmanship and exceptional audio performance. Ideal for various settings, the TimberVox Series guarantees clear, rich sound reproduction that resonates with warmth. The enclosure not only enhances acoustic quality but also adds an aesthetic touch, seamlessly integrating the speaker into diverse environments. Immerse yourself in an elevated audio experience with the TimberVox Series 2-way Speaker, where the artistry of design meets uncompromising sound quality for a truly immersive listening journey.



W 8



W 10



W 12



W 15

Passive SR Speakers

	D 8	D 10	D 12	D 15
Frequency Range (-10 dB)	65Hz - 20KHz	60Hz - 20KHz	50Hz - 20KHz	40Hz - 20KHz
Maximum Peak Output	117dB	117dB	121dB	124dB
Power Rated	100W RMS	100W RMS	150 RMS	180W RMS
System Impedance	8Ω	8Ω	8Ω	8Ω
Transducers LF Driver	LF: Diameter:8" cone, Voice Coil: 1.5" 30oz, Magnet: Ferrite	LF: Diameter:10" cone, Voice Coil: 1.5" 30oz, Magnet: Ferrite	LF: Diameter:12" cone, Voice Coil: 2.0" 40oz, Magnet: Ferrite	LF: Diameter:15" cone, Voice Coil: 2.5" 50oz, Magnet: Ferrite
Transducers HF Driver	HF: Diaphragm: 1" , Type: 1" throat compression driver, Magnet: Ferrite	HF: Diaphragm: 1" , Type: 1" throat compression driver, Magnet: Ferrite	HF: Diaphragm: 1.35" , Type: 1" throat compression driver, Magnet: Ferrite	HF: Diaphragm: 1.75" , Type: 1" throat compression driver, Magnet: Ferrite
Enclosure	Professional Plastic Speaker	Professional Plastic Speaker	Professional Plastic Speaker	Professional Plastic Speaker
Dimensions (H x W x D)	290 x 240 x 440 mm	350 x 290 x 540 mm	450 x 380 x 560 mm	480 x 390 x 750 mm
Weight	6 kg	7.5 kg	12 kg	16.5 kg

	S 8	S 10	S 12	S 15
Frequency Range (-10 dB)	65Hz - 20KHz	60Hz - 20KHz	50Hz - 20KHz	40Hz - 20KHz
Maximum Peak Output	121dB	121dB	124dB	125dB
Power Rated	150W RMS	150W RMS	350W RMS	350W RMS
System Impedance	8Ω	8Ω	8Ω	8Ω
Transducers LF Driver	LF: Diameter:8" cone, Voice Coil: 1.5" 32oz, Magnet: Ferrite	LF: Diameter:10" cone, Voice Coil: 1.5" 32oz, Magnet: Ferrite	LF: Diameter:12" cone, Voice Coil: 3.0" 60oz, Magnet: Ferrite	LF: Diameter:15" cone, Voice Coil: 3.0" 60oz, Magnet: Ferrite
Transducers HF Driver	HF: Diaphragm: 1" , Type: 1" throat compression driver, Magnet: Ferrite	HF: Diaphragm: 1.35" , Type: 1" throat compression driver, Magnet: Ferrite	HF: Diaphragm: 1.75" , Type: 1" throat compression driver, Magnet: Ferrite	HF: Diaphragm: 1.75" , Type: 1" throat compression driver, Magnet: Ferrite
Enclosure	Professional Plastic Speaker	Professional Plastic Speaker	Professional Plastic Speaker	Professional Plastic Speaker
Dimensions (H x W x D)	330 x 305 x 495 mm	365 x 320 x 560 mm	445 x 415 x 670 mm	475 x 425 x 800 mm
Weight	9 kg	10.5 kg	17 kg	23 kg

	W8	W10	W12	W15
Low Frequency Driver	1x 8"	1x 10"	1x 12"	1x 15"
High Frequency Driver	1x 25mm	1x 25mm	1x 34mm	1x 44mm
Power Rating (RMS)	150W	200W	300W	400W
Power Rating (Peak)	300W	400W	600W	800W
Frequency Response	60Hz-18KHz (±3dB)	60Hz-18KHz (±3dB)	55Hz-20KHz (±3dB)	55Hz-20KHz (±3dB)
Sensitivity	94dB / 1W / 1M	95dB / 1W / 1M	98dB / 1W / 1M	98dB / 1W / 1M
Maximum SPL (RMS)	106dB	108dB	116dB	118dB
Maximum SPL (Peak)	112dB	114dB	122dB	124dB
Nominal Impedance	8Ω	8Ω	8Ω	8Ω
Coverage Angle (H×V)	N/A	80°× 50°	70°× 60°	70°× 60°
Suspension Hardware	8 x M8 screw suspension points	8 x M8 screw suspension points	12 x M8 screw suspension points	12 x M8 screw suspension points
Connectors	2× NL4 Socket, +1, -1	2× NL4 Socket, +1, -1	2× NL4 Socket, +1, -1	2× NL4 Socket, +1, -1
Speaker Pole Mount	N/A	N/A	35mm pole mount	35mm pole mount
Enclosure Material	CNC manufactured, high-density MDF	CNC manufactured, high-density MDF	CNC manufactured, high-density MDF	CNC manufactured, high-density MDF
Weight	6.5Kg	8.8Kg	14.5Kg	20.8Kg
Dimensions (W x D x H)	240 x 253 x 377mm	280 x 300 x 440mm	337 x 362 x 585mm	367 x 410 x 728mm

Passive SR Speakers





Passive Sub-Woofers

Unleash deep, resonant bass with our Passive Subwoofers. Designed for pure low-frequency power, these speakers deliver an immersive audio experience, enhancing your sound system's depth and impact effortlessly.



HS 10 | 10" Sub-woofer

HS 12 | 12" Sub-woofer

Introducing the HS Series Subwoofer, a premier choice in our Passive Subwoofer lineup. Engineered for excellence, this subwoofer delivers deep, resonant bass that elevates your audio experience to new heights. Perfect for large performances, entertainment events, business functions, bar lobbies, multipurpose halls, and fixed installations, the HS Series offers precise and impactful low-frequency reproduction. With its robust performance and versatility, the HS Series Subwoofer sets a new benchmark for low-end sound quality, ensuring an immersive and dynamic listening experience in any setting.



HS 10



HS 12

	HS 10	HS 12
Low Frequency Driver	1x 10" (65mm voice coil, 170mm magnet)	1x 12" (75mm voice coil, 190mm magnet)
Power Rating (RMS)	300W	400W
Power Rating (Peak)	600W	800W
Frequency Response	44Hz-280Hz (±3dB)	42Hz-290Hz (±3dB)
Sensitivity	96dB/1W/1M	98dB/1W/1M
Maximum SPL (RMS)	112dB	115dB
Maximum SPL (Peak)	118dB	121dB
Nominal Impedance	8Ω	8Ω
Suspension Hardware	8 x M8 screw suspension points	8 x M8 screw suspension points
Handles	2	2
Connectors	2x NL4 Socket, +1, -1	2x NL4 Socket, +1, -1
Enclosure Material	CNC manufactured, high-density plywood	CNC manufactured, high-density plywood
Weight	14Kg	18Kg
Dimensions (W x D x H)	447 x 365 x 324mm	469 x 369 x 405mm

Passive Sub-Woofers

HS 15 | 15" Sub-woofer

HS 18 | 18" Sub-woofer

Presenting the HS Series Subwoofer, a standout in our category of Passive Subwoofers. This series/model name signifies a powerful addition to your audio setup, designed to deliver deep and resonant bass for an immersive sound experience. Ideal for various applications, the HS Series guarantees impactful low-frequency reproduction, enriching your audio with precision and depth. Immerse yourself in the dynamic sound of the HS Series Subwoofer, where robust performance meets versatility, setting a new standard for low-end excellence in any setting



HS 15

HS 18

	HS 15	HS 18
Speaker type	15" 1-way	18" 1-way
Frequency range (-10dB)	40-150Hz	35-150Hz
Nominal Coverage Angle	360°	360°
Max.SPL	123dB	124dB
Power	600W RMS	600W RMS
Components	LF: Diameter:15" cone, Voice Coil:4", 1000Z, Magnet:Ferrite	LF: Diameter:18" cone, Voice Coil:4", 1000Z, Magnet:Ferrite
Impedance	8 ohm	8 ohm
Weight (Net/Gross)	35kg/37kg	38kg/40kg
Dimensions	55.5 x 69 x 66cm (W x D x H)	59 x 74 x 72.5cm (W x D x H)

Passive Sub-Woofer





Powered SR Speakers

Elevate your audio experience with Powered 2-Way SR Speakers. Enjoy seamless integration of amplification and clarity, providing a powerful and durable solution for immersive sound.

D 12A | 12" Dynamo Series Powered SR Speaker
D 15A | 15" Dynamo Series Powered SR Speaker

Unveiling the Powered Dynamo Series 2-way Active Speaker, a powerhouse in our Powered 2-Way SR Speakers lineup. This series/model name represents the epitome of audio excellence, seamlessly blending robust durability and superior sound quality. Immerse yourself in a rich sonic experience as the Powered Dynamo Series delivers clear and dynamic audio, setting a new benchmark for versatility and high-performance within the Powered 2-Way SR Speakers category. Elevate your audio journey with the impeccable design and impactful sound of the Powered Dynamo Series 2-way Active Speaker.



	D 12A	D 15A
Speaker type	12" Professional Plastic Speaker	15" Professional Plastic Speaker
Frequency range (-10dB)	50Hz - 20KHz	40Hz - 20KHz
Max. SPL	121dB	124dB
Impedance	4 ohm	4 ohm
Components	LF: Diameter:12" cone, Voice Coil:2.0" 40OZ, Magnet:Ferrite HF: Diaphragm:1.35", Type: 1" throat compression driver, Magnet:Ferrite	LF: Diameter:15" cone, Voice Coil:2.5" 50OZ, Magnet:Ferrite Diaphragm:1.75", Type: 1" throat compression driver, Magnet:Ferrite
Output power	Class AB with MP3, Bluetooth 5.1 with TWS, 600W PEAK,150W RMS	Class AB with MP3, Bluetooth 5.1 with TWS, 720W PEAK,180W RMS
Enclosure	Professional Plastic Speaker	Professional Plastic Speaker
Weight (Net/Gross)	12KG/13KG	16.5kg/18.5kg
Dimensions	45 x 38 x 65 cm (W x D x H)	48 x 39 x 75 cm (W x D x H)

Powered SR Speakers

S 12A | 12" Symphony Series Powered SR Speaker

S 15A | 15" Symphony Series Powered SR Speaker

Introducing the Powered Symphony Series 2-way Active Speaker, a pinnacle in our Powered 2-Way SR Speakers category. This series/model name signifies the seamless integration of power and precision, offering an immersive audio experience. Immerse yourself in crystal-clear sound as the SA Series redefines expectations, combining sleek design with impactful performance. Elevate your auditory journey with the versatile and powerful Series 2-way Active Speaker, where clarity and excellence converge for an unparalleled listening experience.



S 12A

S 15A

S 12A

S 15A

	S 12A	S 15A
Speaker type	12" Professional Plastic Speaker	15" Professional Plastic Speaker
Frequency range (-10dB)	50Hz - 20KHz	40Hz - 20KHz
Max. SPL	124dB	125dB
Impedance	4 ohm	4 ohm
Components	LF: Diameter:12" cone, Voice Coil:3.0" 60OZ, Magnet:Ferrite HF: Diaphragm:1.75", Type: 1" throat compression driver, Magnet:Ferrite	LF: Diameter:15" cone, Voice Coil:3.0" 60OZ, Magnet:Ferrite HF: Diaphragm:1.75", Type: 1" throat compression driver, Magnet:Ferrite
Output power	Class H 1800W PEAK, 450W RMS	Class H 1800W PEAK, 450W RMS
Enclosure	Professional Plastic Speaker	Professional Plastic Speaker
Weight (Net/Gross)	17kg/18.5 kg	23kg/25 kg
Dimensions	44.5 x 41.5 x 67cm (W x D x H)	47.5 x 42.5 x 80 cm (W x D x H)

Powered SR Speakers





Powered Sub-Woofer

Immerse yourself in powerful, low-end frequencies with our Powered Subwoofers. Engineered for deep bass and dynamic impact, these speakers elevate your audio experience with precision and intensity.

SS 15 | 15" Powered Sub-woofer

SS 18 | 18" Powered Sub-woofer

Unleash the SS Series Powered Subwoofer, a dominating force in our Powered Sub-Woofers category. This series/model name ensures an extraordinary audio experience with its deep, resonant bass and efficient performance. Immerse yourself in a world of impactful low-end frequencies, as the SS Series redefines audio excellence. Elevate your sound system with the powerful and reliable SS Series Powered Subwoofer, where every beat resonates with precision and depth, setting a new standard for immersive bass reproduction.



SS 15

SS 18

	SS 15	SS 18
Speaker type	15" 1-way	18" 1-way
Frequency range (-10dB)	35Hz - 150Hz	35Hz - 150Hz
Nominal Coverage Angle	360°	360°
Max.SPL	122dB	123dB
Power	Class D, 1600W PEAK,400W RMS	Class D, 1600W PEAK,400W RMS
Impedance	4 ohm	4 ohm
Components	LF: Diameter:15" cone, Voice Coil:3.0", 80OZ, Magnet:Ferrite	Diameter:18" cone, Voice Coil:3.0", 80OZ, Magnet:Ferrite
Weight (Net/Gross)	35kg/37kg	38kg/40.5kg
Dimensions	55.5 x 69 x 66cm (W x D x H)	59 x 74 x 72.5cm (W x D x H)



Line Array Speaker

Achieve precise and powerful sound distribution with our Line Array Speakers, designed for large venues and events to deliver consistent, high-quality audio.

BL 5 | Line Array Speaker System

BL 405 | 5" Line Array Speaker

BL 12 | 12" Line Array Speaker System Sub woofer

The BL 405 and BL 12 Line Array speakers are designed for high-performance audio in professional settings such as conference rooms and auditoriums. The BL 405 features four 5.25-inch low-frequency drivers and two 1-inch high-frequency drivers, offering clear and powerful sound. The BL 12 includes a single 12-inch low-frequency driver for robust low-end reinforcement. Both models are constructed with durable birch plywood and feature multiple installation options, steel grilles for protection, and NL4 connectors for reliable signal transmission, ensuring exceptional audio quality and versatility.



BL 5

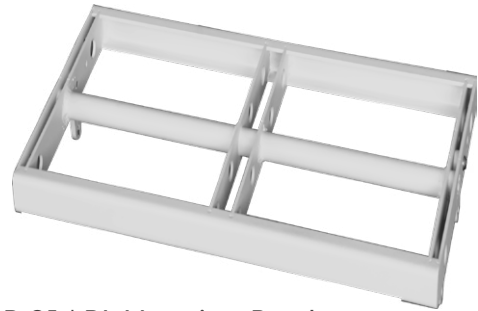
Line Array Speaker



BL 405



BL 12



BLB 01 | BL Hanging Bracket

	BL 405	BL 12
High Frequency Driver	2×1" (25mm)/1" voice coil	N/A
Low Frequency Driver	4×5.25" (130mm)/1" voice coil	1×12" (300mm)/2" voice coil
Rated Impedance	4 ohm	4 ohm
Rated Power	200W	300W
Peak Power	800W	1200W
Frequency Response	90Hz-20KHz	60Hz-300Hz
Directivity	90°×10°	N/A
Sensitivity	97dB/M/W	97dB/M/W
Maximum SPL	118dB	118dB
Enclosure Material	Birch plywood, rainproof paint finish	Birch plywood, rainproof paint finish
Protective Grille	Steel grille	Steel grille
Connectors	NL4*2	NL4*2
Net Weight	11kg	12.5kg
Dimensions (W x D x H)	450×188×319mm	450×220×351mm

BLB 01	
Bracket Frame	1 piece
Material	Cold rolled steel plate
Dimensions (W × D × H)	445mm × 235mm × 30mm
Appearance	White
U-shaped Clamps	15mm × 4 pieces
U-shaped Clamps Appearance	Galvanized
Maximum Load Capacity	≤ 500Kg
Minimum Distance from Back Wall	≥ 100mm

Line Array Speaker

JL 6 | 6" J-shape Line Array Speaker System

JL 206 | 6" Line Array Speaker

JLS 15 | 15" Line Array Sub-woofer

JL 8 | 8" J-shape Line Array Speaker System

JL 208 | 8" Line Array Speaker

JLS 18 | 18" Line Array Sub-woofer

JL 10 | 10" J-shape Line Array Speaker System

JL 210 | 10" Line Array Speaker

JLS 18-10 | 18" Line Array Sub-woofer

The JL Series J-Shape Line Array Speakers are meticulously crafted for superior audio performance across various professional environments, including large-scale events, bar lobbies, luxury hotels, sports venues, conference centers, multifunction halls, and permanent installations. This series comprises three models—JL 6, JL 8, JL 10—each designed to deliver precise and powerful sound through advanced technology and high-quality components. The speakers feature configurable directivity, achieved through sophisticated DSP control, which enhances speech clarity and reduces unwanted reflections. Accompanied by dedicated subwoofers, these models provide comprehensive audio coverage, ensuring an immersive and dynamic listening experience.



JL 6



JL 8



JL 10

Line Array Speaker



JLS 15



JLS 18



JL 206



JL 208



JL 210



JLS 18-10

Line Array Speaker

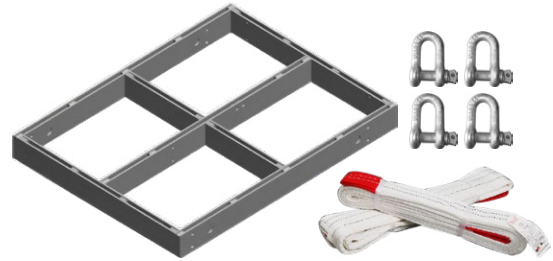
	JL 206	JL 208	JL 210
Low Frequency Driver	2x 6.5" (45mm)	2x 8" (65mm)	2x 10" (65mm)
High Frequency Driver	1x 44mm	1x 75mm	1x 75mm
Rated Power (RMS)	350W	600W	700W
Peak Power	700W	1200W	1400W
Frequency Response	55Hz-20KHz (±3dB)	55Hz-20KHz (±3dB)	55Hz-20KHz (±3dB)
Sensitivity	97dB / 1W / 1M	98dB / 1W / 1M	99dB / 1W / 1M
Maximum SPL (RMS)	126dB	126dB	128dB
Maximum SPL (Peak)	132dB	132dB	134dB
Nominal Impedance	8Ω	8Ω	8Ω
Coverage Angle (H x V)	100° x N°	110° x 15°	110° x 15°
Suspension Hardware	Bracket	Dedicated hanging hardware	Dedicated hanging hardware
Handles	2	4	4
Connectors	2× NL4 Socket, +1, -1	2× NL4 Socket, +1, -1	2× NL4 Socket, +1, -1
Enclosure Material	CNC manufactured, high-density birch plywood	CNC manufactured, high-density birch plywood	CNC manufactured, high-density birch plywood
Weight	16.5kg	22.5kg	27.8kg
Dimensions (W x D x H)	550x418x234mm	680x370x275mm	800x420x278mm

	JLS 15	JLS 18	JLS 188
Low Frequency Driver	1x 15" (100mm)	1x 18" (100mm)	1x 18" (100mm)
Rated Power (RMS)	500W	600W	600W
Peak Power	1000W	1200W	1200W
Frequency Response	35Hz-3000Hz (±3dB)	40Hz-300Hz (±3dB)	40Hz-300Hz (±3dB)
Sensitivity	98dB / 1W / 1M	104dB / 1W / 1M	106dB / 1W / 1M
Maximum SPL (RMS)	120dB	130dB	132dB
Maximum SPL (Peak)	126dB	136dB	138dB
Nominal Impedance	8Ω	8Ω	8Ω
Suspension Hardware	Bracket	Dedicated hanging hardware	Dedicated hanging hardware
Handles	2	4	4
Connectors	2× NL4 Socket, +1, -1	2× NL4 Socket, +1, -1	2× NL4 Socket, +1, -1
Enclosure Material	CNC manufactured, high-density birch plywood	CNC manufactured, high-density birch plywood	CNC manufactured, high-density birch plywood
Weight	30.1kg	51.4kg	56.6kg
Dimensions (W x D x H)	733x500x546mm	680x680x580mm	800x650x550mm

Line Array Speaker



JLB 6 | JL 6 Hanging Bracket



JLB 10 | JL 10 Hanging Bracket



JLB 8 | JL 8 Hanging Bracket

	JLB 6	JLB 8	JLB 10
Cross Bracket	1 piece	1 piece	1 piece
Material	Cold-rolled steel	Cold-rolled steel	Cold-rolled steel
Dimensions (W×D×H)	600mm×780mm×80mm	722mm×824mm×80mm	864mm×824mm×80mm
Appearance	Black	Black	Black
U-shaped Buckle	22mm * 4 pieces	22mm * 4 pieces	22mm * 4 pieces
Appearance (U-shaped Buckle)	Galvanized	Galvanized	Galvanized
Strong Rope	1.5m * 2 pieces	1.5m * 2 pieces	1.5m * 2 pieces
Appearance (Strong Rope)	Red ends, white middle	Red ends, white middle	Red ends, white middle
Maximum Load	≤ 2000kg	≤ 2000kg	≤ 2000kg
Minimum Distance from Back Wall	≥ 100mm	≥ 100mm	≥ 100mm

Line Array Speaker





Monitor Speaker

Ensure flawless performance with our Monitor Speakers, delivering accurate and detailed sound for professional stage monitoring and critical listening environments.

MS 110 | 10" Monitor Speaker

MS 112 | 12" Monitor Speaker

The MS Series Professional Stage Monitor Speakers are designed to provide exceptional sound quality and reliability for stage monitoring, large performances, entertainment events, business functions, bar halls, multifunctional rooms, and fixed installations. These speakers are engineered with high-quality components and robust construction to ensure durability and superior audio performance in demanding environments.



MS 110



MS 112

	MS 110	MS 112
Low Frequency Driver	1x10" (44mm high, 65mm 156 magnet low) coaxial driver	1x12" (65.5mm high, 76mm 190 magnet low) coaxial driver
Power Handling	400W (RMS), 800W (PEAK)	500W (RMS), 1000W (PEAK)
Frequency Response	50Hz-18KHz (±3dB)	55Hz-18KHz (±3dB)
Sensitivity	96dB/1W/1M	98dB/1W/1M
Maximum SPL	116dB (RMS), 122dB (PEAK)	118dB (RMS), 124dB (PEAK)
Nominal Impedance	8Ω	8Ω
Coverage Angle	60°×40° (H×V)	60°×40° (H×V)
Mounting Hardware	4 x M8 screw mounting points	4 x M8 screw mounting points
Handles	2	2
Speaker Stand Mount	35mm pole socket	35mm pole socket
Connectors	2×NL4 Socket, +1, -1	2×NL4 Socket, +1, -1
Enclosure Material	CNC-made, high-density MDF board	CNC-made, high-density MDF board
Weight	11KG	18KG
Dimensions (W x D x H)	318x352x268mm	400x470x328mm



Column Array Speaker

Discover sleek and versatile audio solutions with our Column Array Speakers, providing excellent sound coverage and aesthetic appeal for both indoor and outdoor installations.

SL 42 | Premium Slim Line Array Speaker SL 122 | Premium Slim Line Array Speaker
SL 92 | Premium Slim Line Array Speaker SL 162 | Premium Slim Line Array Speaker

Explore sonic perfection with the Premium Slim Line Array Speaker, a distinguished addition to our Slim Line Array Speaker category. This series/model name embodies the epitome of audio sophistication, marrying sleek design with superior sound quality. Immerse yourself in a captivating auditory experience as the Premium Slim Line Array Speaker delivers crystal-clear highs and dynamic lows. Elevate your sound setup with this premium series, where aesthetics meet unparalleled audio performance, setting a new standard for excellence in the Slim Line Array Speaker category.



SLB 01 | SL Mounting Bracket

SL 42
 SL 92
 SL 122
 SL 162



	SL 42	SL 92	SL 122	SL 162
Frequency Range	200-18KHz	200-18KHz	200-18KHz	200-18KHz
Unit	4*2.25"	9*2.25"	12*2.25"	16*2.25"
Voice Coil Size	25mm VC	25mm VC	25mm VC	25mm VC
Rate Impedance	4 Ohm	4 Ohm	6 Ohm	4 Ohm
Rate Power (Continuous/Max)	160W/320W	360W/720W	480W/960W	640W/1280W
Sensitivity (1m/1W)	91dB	92dB	92dB	92dB
Max SPL	113dB	118dB	119dB	120dB
Coverage Angle	H100°*V25°	H100°*V18°	H100°*V16°	H100°*V14°
Connector	2*NL4 speakon	2*NL4 speakon	2*NL4 speakon	2*NL4 speakon
Dimension	68 x 85 x 245 mm (W x D x H)	68 x 85 x 542 mm (W x D x H)	68 x 85 x 720 mm (W x D x H)	68 x 85 x 956 mm (W x D x H)
Weight (Kg)	1.3	2.5	3.4	4.5

Column Array Speaker

SLW 43 | 3" Weatherproof Column Array Speaker

SLW 83 | 3" Weatherproof Column Array Speaker

The SLW Series Column Speakers are designed for high-performance sound in both indoor and outdoor environments. These speakers, featuring durable extruded aluminum housings and painted aluminum grilles, are ingress protected to IP55, ensuring reliability in various weather conditions. The SLW 43 model includes four full-range transducers and one tweeter, while the SLW 83 model is equipped with eight full-range transducers and two tweeters, making them ideal for long-throw applications. With built-in 70V and 100V transformers and direct 8 ohm/4 ohm capability, these speakers offer versatile installation options. Their slim, attractive construction and included swivel (pan)/tilt wall aluminum alloy bracket make them a practical choice for accurate sound distribution in commercial settings.



SLWB 01 | SLW Mounting Bracket



SLW 43

SLW 83

Column Array Speaker

	SLW 43	SLW 83
Frequency Range (-10dB)	100Hz-20KHz	95Hz-20KHz
Sensitivity (1W/1m)	90dB	93dB
Max SPL	108dB	114dB
Nominal Impedance	4Ω (in Thru mode)	8Ω (in Thru mode)
Power Taps	3.75W@70V; 7.5W@100V (1333Ω) 7.5W@70V; 15W@100V (666Ω) 15W@70V; 30W@100V (333Ω) 30W@70V; N/C@100V (166Ω)	7.5W@70V; 15W@100V (666Ω) 15W@70V; 30W@100V (333Ω) 30W@70V; 60W@100V (166Ω) 60W@70V; N/C@100V (83Ω)
Power Capacity	60W (240W peak), 100hrs/4Ω	120W (480W peak), 100hrs/8Ω
Coverage Pattern (H×V)	120° × 70°	120° × 70°
Drivers	4 × 2.7" Full-Range 1 × 1" Tweeter	8 × 2.7" Full-Range 2 × 1" Tweeters
Material	Housing: Extruded aluminum Grille: Aluminum	Housing: Extruded aluminum Grille: Aluminum
Outdoor Capability	IP55	IP55
Colour/Finish	Black	Black
Connector	Euro Terminal Block 5.08×4P	Euro Terminal Block 5.08×4P
Dimensions (H×W×D)	594 × 91 × 120 mm	1170 × 91 × 120 mm
Net Weight	3.3 kg	6.5 kg
Mounting	Aluminum alloy wall bracket	Aluminum alloy wall bracket

Column Array Speaker

VA 204 | Premium Column Speaker

VA 404 | Premium Column Speaker

VA 604 | Premium Column Speaker

VA 804 | Premium Column Speaker

VA 204-L | Premium Column Speaker

VA 404-L | Premium Column Speaker

VA 604-L | Premium Column Speaker

VA 804-L | Premium Column Speaker

The VA series is a versatile and powerful range of full-range column speakers designed for a variety of applications, such as conference centers, broadcast rooms, educational facilities, and small entertainment venues. Each model in the VA Series is built with a high-sensitivity 4-inch full-range driver housed in a wooden enclosure, providing excellent sound coupling and a quasi-line source characteristic. This design ensures sharp vertical directivity and wide horizontal dispersion, making it ideal for delivering clear and powerful sound over long distances. The series includes four high-impedance models: VA 204 with two units, VA 404 with four units, VA 604 with six units, and VA 804 with eight units. It also comes in a low-impedance version: VA 204-L with two units, VA 404-L with four units, VA 604-L with six units, and VA 804-L with eight units, allowing flexibility to match different venue sizes and sound reinforcement needs.



SLB 01 | SL Mounting Bracket



VA 204



VA 404



VA 604



VA 804

Column Array Speaker



SLB 01 | SL Mounting Bracket



VA 204-L



VA 404-L



VA 604-L



VA 804-L

Column Array Speaker

High Impedance

	VA 204	VA 404	VA 604	VA 804
Frequency Range	90-18KHz	90-18KHz	90-18KHz	90-18KHz
Driver Units	2*4"	4*4"	6*4"	8*4"
Voice Coil Size	20mm VC	20mm VC	20mm VC	20mm VC
Rated Impedance	500 Ohm	250 Ohm	167 Ohm	125 Ohm
Power (RMS/Peak)	20W	40W	60W	80W
Sensitivity (1m/1W)	93dB	96dB	97dB	99dB
Max SPL	113dB	118dB	119dB	123dB
Coverage Angle (H x V)	100° x 30°	100° x 18°	100° x 16°	100° x 14°
Connector	2*NL4	2*NL4	2*NL4	2*NL4
Dimensions (W x D x H)	120 x 145 x 260 mm	120 x 145 x 525 mm	120 x 145 x 806 mm	120 x 145 x 1006 mm
Weight	3 kg	5.5 kg	8 kg	10.3 kg

Low Impedance

	VA 204-L	VA 404-L	VA 604-L	VA 804-L
Frequency Range	90-18KHz	90-18KHz	90-18KHz	90-18KHz
Driver Units	2*4"	4*4"	6*4"	8*4"
Voice Coil Size	20mm VC	20mm VC	20mm VC	20mm VC
Rated Impedance	4 Ohm	8 Ohm	6 Ohm	4 Ohm
Power (RMS/Peak)	60W/120W	120W/240W	180W/360W	240W/480W
Sensitivity (1m/1W)	95dB	98dB	98dB	101dB
Max SPL	111dB	117dB	119dB	123dB
Coverage Angle (H x V)	100° x 30°	100° x 18°	100° x 16°	100° x 14°
Connector	2*NL4	2*NL4	2*NL4	2*NL4
Dimensions (W x D x H)	120 x 145 x 260 mm	120 x 145 x 525 mm	120 x 145 x 806 mm	120 x 145 x 1006 mm
Weight	2.8 kg	5.3 kg	7.8 kg	10 kg

Column Array Speaker





Steerable Column Array Speaker

Discover sleek and versatile audio solutions with our Steerable Column Array Speakers, providing excellent sound coverage and aesthetic appeal for indoor installations.

AL 803 | 3" Steerable Column Array Speaker

AL 804 | 4" Steerable Column Array Speaker

Introducing the AL 803 and AL 804 Steerable Array Speakers, the latest advancements in our audio lineup designed for precise and dynamic sound delivery. These speakers utilize directional waveguide technology to suppress unwanted side lobes and achieve desired directivity, enhancing speech clarity and reducing interference from reflections. With powerful DSP capabilities, users can adjust the vertical radiation angle, control beam shaping, and manage various audio parameters through an intuitive software interface. The sleek wooden enclosures are aesthetically pleasing and available in black, seamlessly blending into any environment. Supporting multiple installation methods, these speakers are ideal for diverse applications.

The AL 803 features eight 3-inch full-range drivers and delivers an impressive performance with a power rating of 180W RMS and 720W peak. The AL 804, equipped with eight 4-inch full-range drivers, offers a robust 200W RMS and 800W peak power. Both models incorporate high-efficiency Class-D amplifiers and comprehensive protective features, ensuring reliable and powerful audio performance while maintaining energy efficiency. Experience unparalleled sound quality and versatility with the AL 803 and AL 804 Steerable Array Speakers.



SLB 01 | SL Mounting Bracket



AL 803

AL 804

Steerable Column Array Speaker

	AL 803	AL 804
Full-range Drivers	8×3" (75mm)/0.75" voice coil	8×4" (100mm)/0.75" voice coil
Rated Power (RMS)	180W	200W
Peak Power	720W	800W
Frequency Response	80Hz-20KHz	78Hz-20KHz
Directivity	120°×30° ±20°	120°×30° ±20°
Sensitivity	93dB/M/W	96dB/M/W
Maximum SPL	115dB	120dB
Enclosure Material	Wooden, rainproof paint finish	Wooden, rainproof paint finish
Protective Grille	Steel grille	Steel grille
Amplifier Type	Class-D with integrated digital audio switch power	Class-D with integrated digital audio switch power
DSP	24-bit AD/DA, 96kHz sampling rate	24-bit AD/DA, 96kHz sampling rate
Connectors	NL4*2	NL4*2
Weight	8.8kg	11.8kg
Dimensions (W x D x H)	115×142×694mm	131×150×966mm

Steerable Column Array Speaker





Powered Column Array Loudspeaker

Experience unparalleled audio projection with our Powered Column Array Loudspeaker. This sleek, vertical design combines power and clarity, delivering immersive sound coverage for a superior listening experience in any setting.

X 8 | HF Array with Sub-woofer

X 10 | HF Array with Sub-woofer

Introducing our Powered Column Array Loudspeaker, featuring the Speaker with Subwoofer – a dynamic addition to our category. This series/model name emphasizes powerful audio projection and immersive low-end frequencies without the HF Array. Immerse yourself in a complete audio experience, redefining sound reinforcement for your events or performances. Elevate your sound setup with the Speaker with Subwoofer, where impactful lows and clear mids seamlessly blend, setting a new standard for versatility and performance in the Powered Column Array Loudspeaker category.



X 8

X 10



X 8

X 10

	X 8	X 10
Max.SPL	115dB	117dB
Frequency range (-10dB)	40 Hz - 20 kHz	40 Hz - 20 kHz
Crossover frequency	170Hz	170Hz
Rechargeable battery	14.8V 5200MA lithium	14.8V 5200MA lithium
Overall system height	151cm	170cm
SUB Weight (Net/Gross)	12.5kg/13.5kg	16kg/17kg
Column Weight (Net/Gross)	5.5kg/ 6 kg	5.5 kg/6 kg
SUB Dimensions	42.5 x 38 x 45.5cm (W x D x H)	62.5 x 40 x 52.5cm (W x D x H)
Column Dimensions	32.5 x 19.5 x 35 cm (W x D x H)	32.5 x 19.5 x 39 cm (W x D x H)
Components	LF: 1 x 8" Woofer, 2" VC 300Z HF: 4*2.75" MF (Neodymium)	LF: 1 x 10" Woofer, 2" VC 400Z HF: 4*3" MF
System includes	1x Subwoofer 1x AC Power Cord 1x Column 2x Spacer	1x Subwoofer 1x AC Power Cord 1x Column 2x Spacer
Power amplifier output	Class D Bi-amp with DSP (4 modes) Bluetooth 5.7 with TWS 5V 7A USB charger for your smart phone 800W PEAK,200W RMS(100W column + 100W sub)	Class D Bi-amp with DSP (4 modes) Bluetooth 5.7 with TWS 5V 7A USB charger for your smart phone 800W PEAK,200W RMS(100W column + 100W sub)

Powered Column Array Loudspeaker

X 10-2 | HF Array with Sub-woofer

X 12 | HF Array with Sub-woofer

X 15 | HF Array with Sub-woofer

Presenting our Powered Column Array Loudspeaker, featuring the Speaker and HF Array with Subwoofer – a revolutionary addition to our lineup. This series/model name signifies a harmonious combination of powerful audio projection and immersive low-end frequencies. Immerse yourself in a complete audio experience as this system redefines sound reinforcement. Elevate your events, performances, or presentations with the Speaker and HF Array with Subwoofer, where seamless integration and impactful sound converge, setting a new standard in the Powered Column Array Loudspeaker category.



	X 10-2	X 12	X 15
Max SPL	125 dB	125 dB	128 dB
Frequency range (-10dB)	40 Hz - 20 KHz	40 Hz - 20 KHz	47 Hz - 20 KHz
Crossover frequency	170 Hz	170 Hz	170 Hz
Overall System height	201cm	190 cm	200 cm
SUB Weight (Net/Gross)	24kg/25kg	22kg/23kg	35kg/37kg
Column Weight (Net/Gross)	5.5kg/6kg	5.5kg/6kg	6.15kg/6.65kg
SUB Dimensions	41 x 56.5 x 69.5 cm (W x D x H)	45 x 59.5 x 58.5 cm (W x D x H)	52.5 x 69 x 66.5 cm (W x D x H)
Column Dimensions	83.5 x 32.5 x 19.5 cm (W x D x H)	83.5 x 32.5 x 19.5 cm (W x D x H)	83.5 x 32.5 x 19.5 cm (W x D x H)
Components	LF: 2 x 10" Woofer, 2" VC 44OZ HF: 6*3MF (Neodymium)+1*HF(Neodymium)	LF: 1 x 12" Woofer, 2" VC 2*54OZ HF: 6*3MF (Neodymium)+1*HF(Neodymium)	LF: 1 x 15" Woofer, 3" VC 80OZ HF: 2 X 6*3" MF (Neodymium)+1 "HF (Neodymium)
System includes	1x Subwoofer 1x Column, 1x Spacer, 1x AC Power Cord	1x Subwoofer 1x Column, 1x Spacer, 1x AC Power Cord	1X Subwoofer , 2x Column, 1x AC Power Cord
Power Amplifier Output	Class D Bi-amp with DSP (4 modes) Bluetooth 5.1 with TWS 4000W PEAK, 1000W RMS(500W Column + 500W Sub)	Class D Bi-amp with DSP (4 modes) Bluetooth 5.1 with TWS 4000W PEAK, 1000W RMS(500W Column + 500W Sub)	Class D Bi-amp with DSP (4 modes) Bluetooth 5.1 with TWS 4000W PEAK, 1000W RMS(500W Column + 500W Sub)

Powered Column Array Loudspeaker





Portable Battery/AC Powered Speaker System

Unleash portability and power with our Portable Battery/AC Powered Speaker System. This streamlined solution packs robust sound, making it ideal for on-the-go events, presentations, and gatherings, ensuring clear, amplified audio with ease.

CS 10 | Portable Party Speaker

Introducing our Portable Battery/AC Powered Speaker System, featuring the Portable Battery Speaker with a Wired Microphone – a versatile addition to our lineup. This series/model name signifies the perfect blend of portability and functionality, providing an all-inclusive solution for on-the-go audio needs. Immerse yourself in a hassle-free audio experience with the convenience of a wired microphone. Elevate your events, presentations, or gatherings with the Portable Battery Speaker, setting a new standard for compact and efficient sound solutions as the Portable Battery/AC Powered Speaker System



CS 10

Portable Battery/AC Powered Speaker System



CS 10

Speaker Type	2*10" Portable PA System
MAX. SPL	124dB
Frequency Range (-10dB)	60Hz - 20KHz
Rechargeable Battery	14.8V 5200MA Lithium
Weight (Net/Gross)	19kg/21kg
Dimensions	71 x 34.5 x 60 cm (W x D x H)
Components	LF: Diameter:10" cone, Voice Coil:1.5" 320Z, Magnet:Ferrite HF: Diaphragm:1" , Type:1" throat compression driver, Magnet:Ferrite
System Includes	1xCS 10, 1x Wire Microphone, 2x Speaker Stand, 2x Speaker Cables, 1x AC Power Cord
Power Amplifier Output	Class D Bi-amp with DSP (4 modes) & MP3 Bluetooth 5.1 with TWS 5V 1A USB Charger for your smart phone 400W PEAK, 200W RMS(100W HF + 100W LF)

Portable Battery/AC Powered Speaker System

MS 12W | Portable Battery Speaker

Introducing our Battery Speaker category, featuring the Portable Battery Speaker – a versatile audio solution designed for ultimate portability. This series/model name signifies a harmonious balance of convenience and performance, providing a reliable and rechargeable speaker for on-the-go audio needs. Immerse yourself in a wireless audio experience that goes wherever you do. Elevate your outings, events, or spontaneous gatherings with the Portable Battery Speaker, setting a new standard for convenience and quality in the Battery Speaker category.



MS 12W

MS 12W

Speaker Type	12" Portable Battery Speaker
MAX. SPL	122dB
Frequency Range (-10dB)	50Hz - 20KHz
Rechargeable Battery	12V 7000MA Lead acid
Weight (Net/Gross)	14kg/15kg
Dimensions	40 x 36.5 x 60 cm (W x D x H)
Components	LF: Diameter:12" Cone, Voice Coil:1.5" 32Oz, Magnet:Ferrite HF: Diaphragm:1" , Type 1" throat compression driver, Magnet:Ferrite
System Includes	1xMS 12W, 2x UHF Wireless Microphone, 1x AC Power Cord
Power Amplifier Output	Class D Bi-amp with DSP (4 modes) & MP3 Bluetooth 5.1 with TWS 5V 1A USB charger for your smart phone 800W PEAK, 200W RMS(100W HF + 100W LF)

Portable Battery/AC Powered Speaker System

JS 100 | Portable Musicbox Speaker

The JS 100 Music Box is a versatile and powerful audio solution designed to meet the needs of various settings, including conference halls, cafes, schools, supermarkets, outdoor performances, live streaming, and background music. With its comprehensive features and robust design, it delivers high-quality sound and reliable performance, making it an ideal choice for both indoor and outdoor applications. The JS 100 comes with two UHF wireless microphones and one remote control, providing users with the flexibility and convenience needed for various audio setups.



JS 100

Low-Frequency Driver	1 x 6.5"
Mid-Frequency Driver	1 x 3"
High-Frequency Driver	1 x 2.5"
Power Output	100W (RMS)
Frequency Response	50Hz-18KHz (± 3 dB)
Number of Channels	2
Rated Current	2500mAh
Battery Capacity	3 x 26800mAh Lithium Batteries
Supported Functions	Bluetooth/USB/BT/FM/AUX Audio Output/Karaoke Input/MIC/TWS Bluetooth Connection
Net Weight	6.8 kg
Gross Weight	8.5 kg
Dimensions (W x D x H)	365 x 200 x 252 mm
Packaging Dimensions (W x D x H)	420 x 250 x 309 mm
Accessories	2 UHF Wireless Microphones, 1 Remote Control

Portable Battery/AC Powered Speaker System





Ceiling Speakers

Seamlessly integrate audio into your space with our Ceiling Speakers. Discreet and high-performing, these speakers provide immersive sound, effortlessly blending into your environment for a sophisticated audio experience.

HC 631 | Music Ceiling Speaker

HC 631E | Music Ceiling Speaker

The H Series speaker range caters to the evolving needs of the AV and BGM industry, ideal for diverse settings like hotels, conference rooms, auditoriums, and more. Tailor your audio experience with flexibility—choose High Impedance for centralized systems, Low Impedance for distributed quality, or Wireless for cable-free installations. Our H Series speakers, with a power output of 30W, offer a versatile solution, allowing you to mix and match systems based on your unique project requirements for unparalleled audio quality in any environment.



HC 631



HC 631E

	HC 631	HC 631E
Rated Input	100V : (30 - 15 - 7.5 W) 70V : (15 - 7.5 - 3.8 W)	100V : (30 - 15 - 7.5 W) 70V : (15 - 7.5 - 3.8 W)
Rated Impedance	330Ω (330 - 670 - 1300 Ω)	330Ω (330 - 670 - 1300 Ω) / 8Ω
Maximum Power	45W	45W
Frequency Response (-10 dB)	35 - 20kHz	35 - 20kHz
Frequency Response (-3dB)	60 - 18kHz	60 - 18kHz
Sensitivity 1W @ 1m	92 / 107 dB	92 / 107 dB
Coverage Angle (1kHz, -6dB)	130 °	130 °
Speaker Component	160 mm 2-Way Coaxial Loudspeaker	160 mm 2-Way Coaxial Loudspeaker
Safety	EN 62368-1	EN 62368-1
Material & Finish	Frame: ABS, white Grille: Treated Steel Mesh, white	Frame: ABS, white Grille: Treated Steel Mesh, white Enclosure: ABS, white
Dimensions	Dia. 230 x 75 mm	Dia. 260 x 178 mm
Weight	1 kg	2 kg

Ceiling Speakers

HC 831 | Music Ceiling Speaker

HC 831E | Music Ceiling Speaker

The H Series 8-inch speakers, boasting a robust 30W power output, are tailor-made for the dynamic demands of the AV and BGM industry. Perfectly suited for diverse applications such as hotels, conference rooms, and auditoriums, these speakers offer a versatile solution. Choose High Impedance for centralized systems, Low Impedance for distributed audio excellence, or Wireless for cable-free installations. With the H Series 8-inch speakers, enjoy the flexibility to mix and match systems, ensuring exceptional audio quality tailored to your project needs.



HC 831



HC 831E

	HC 831	HC 831E
Rated Input	100 V : 30W (30 - 15- 7.5 W) 70 V : 15 W (15 - 7.5 - 3.8 W)	100 V : 30W (30 - 15- 7.5 W) 70 V : 15 W (15 - 7.5 - 3.8 W)
Rated Impedance	330 Ω (330- 670 - 1330 Ω)	330 Ω (330- 670 - 1330 Ω)
Maximum Power	40 W	40 W
Frequency Response	55 Hz - 20 kHz	55 Hz - 20 kHz
Sensitivity 1W @ 1m	96 / 108 dB	96 / 108 dB
Coverage Angle (1kHz, -6dB)	120 °	120 °
Speaker Component	200 mm 2-Way Coaxial Loudspeaker	200 mm 2-Way Coaxial Loudspeaker
Safety	EN 62368-1	EN 62368-1
Material & Finish	Frame: ABS Grille: Treated Steel Mesh	Frame: ABS Grille: Treated Steel Mesh Enclosure: Steel
Dimensions	Dia. 275 x 95 mm	Dia. 275 x 180 mm
Weight	2.3 kg	3.3 kg

Ceiling Speakers

HC 851| Music Ceiling Speaker

HC 851E | Music Ceiling Speaker

Tailored for the dynamic requirements of the AV and BGM industry, the H Series 8-inch speakers boast an impressive 50W power output. Suited for various applications such as hotels, conference rooms, and auditoriums, these speakers provide a flexible solution. Opt for High Impedance in centralized systems, with the H Series 8-inch speakers, you have the freedom to mix and match systems, ensuring superior audio quality customized to the unique needs of your project. The speaker allows easy adjustment of transformer taps to match different ceiling speaker impedance requirements, providing further installation flexibility.



HC 851



HC 851E

	HC 851	HC 851E
Rated Input	100 V : 50 W (50 - 25 - 12.5 W)/8 Ω 70 V : 25 W (25 - 12.5 - 6.25 W)/8 Ω	100 V : 50 W (50 - 25 - 12.5 W)/8 Ω 70 V : 25 W (25 - 12.5 - 6.25 W)/8 Ω
Rated Impedance	200 Ω (200 - 400 - 800 Ω)	200 Ω (200 - 400 - 800 Ω)
Maximum Power	50 W	50 W
Frequency Response	55 Hz - 20kHz	55 Hz - 20kHz
Sensitivity 1W @ 1m	94 / 106 dB	94 / 106 dB
Coverage Angle (1kHz, -6dB)	120 °	120 °
Speaker Component	275 mm 2-Way Coaxial Loudspeaker	275 mm 2-Way Coaxial Loudspeaker
Safety	EN 62368-1	EN 62368-1
Material & Finish	Frame: ABS Grille: Treated Steel Mesh	Frame: ABS Grille: Treated Steel Mesh Enclosure: Steel
Dimensions	Dia. 275 x 105 mm	Dia. 275 x 175 mm
Weight	2 kg	3 kg

Ceiling Speakers

CX 530-BT | 30W Bluetooth Ceiling Coaxial Speaker

CX 530 | Ceiling Coaxial Speaker (Slave)

The CX530-BT is a truly flexible Bluetooth Ceiling Speaker system that is suitable to complement the Business Audio Solution AEX System introduced. The unit has a built-in Bluetooth module that can pair to any smartphones, iPod, tablet or any Bluetooth enabled device, be it iOS or Android. Once it is paired, it allows Bluetooth music to be played from any mobile devices on the fly. The CX530-BT consists of a 135mm coaxial loudspeaker driver, capable of delivering up to 105dB of Sound Pressure Level (SPL) and providing high fidelity music reproduction. It can be paralleled to up to 3 slave 8-ohm passive coaxial CX 530 speakers for larger area coverage. Its simple and easy to install design makes it a suitable high quality music and audio solution for restaurants, cafes, hotel guest room, offices, gym, and spa.



CX 530-BT



CX 530

	CX 530-BT	CX 530-Slave
Power Supply	adapter AC100V-AC240V±10% 50-60Hz	NA
Power Consumption	Max 50W (4CH)	15W
Frequency Response	100Hz - 18kHz	100Hz - 18kHz
Coverage Angle (1kHz, -6dB)	180 °	180 °
Speaker Component	full range 5.25"	full range 5.25"
Wireless	Bluetooth 4.2	NA
THD	<0.05% at 1kHz, 1/3 rated power	<0.05% at 1kHz, 1/3 rated power
S/N	>70dB	>70dB
Protocols	HFPV1.5, A2DPV1.2, AVRCPV1.4, HSP1.2, GA VDP1.2, IOP	NA
Material & Finish	Frame: ABS, white Grille: Treated Steel Alloy Mesh, white	Frame: ABS, white Grille: Treated Steel Alloy Mesh, white
Dimensions	Dia. 188 x 76 mm	Dia. 188 x 76 mm
Weight	0.9 Kg	0.6 KG

Ceiling Speakers





HiFi In-Ceiling/In-Wall Speaker

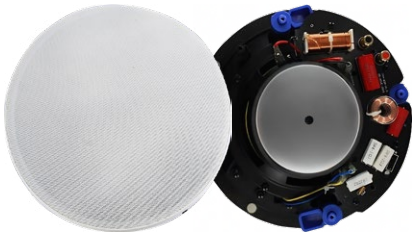
Immerse yourself in premium audio discreetly with our HiFi In-Ceiling/In-Wall Speakers. Designed for exceptional sound quality, these speakers seamlessly blend into your space for an elevated listening experience.

HC 522 | 2-Way HiFi In-Ceiling Speaker

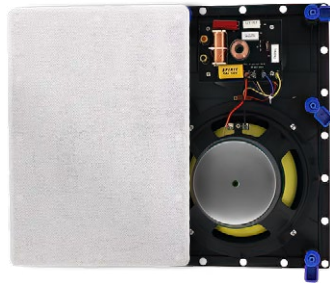
HC 523 | 2-Way HiFi In-Wall Speaker

HC 524 | Double 2-Way HiFi In-Wall Speaker

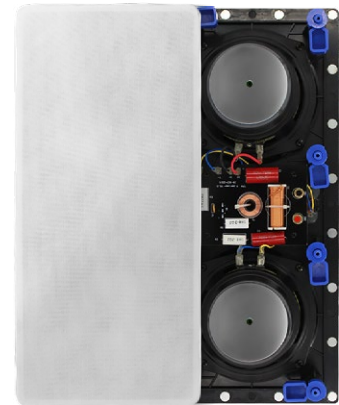
Explore premium audio discreetly with our Hifi In-Ceiling/In-Wall Speaker category, featuring the HC Series HiFi 5inch – a pinnacle of acoustic excellence. This series/model name represents a meticulous fusion of high-fidelity sound and seamless integration. Immerse yourself in a refined auditory experience, whether hidden in your ceiling or wall. Elevate your home audio setup with the HC Series HiFi 5inch, where sophisticated design meets uncompromising sound quality, setting a new standard for in-ceiling and in-wall speakers in the Hifi category.



HC 522



HC 523



HC 524

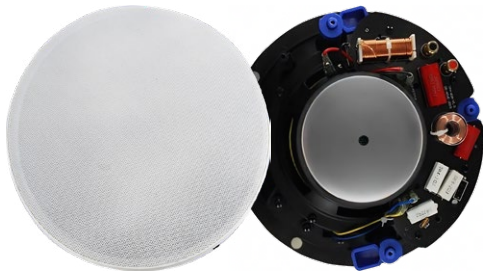
	HC 522	HC 523	HC 524
Rated Input	20W-10W-5W 100V/8Ω	20W-10W-5W 100V/8Ω	50W-25W-12.5W 100V/8Ω
Impedance	500/1.0 kΩ/2.0 kΩ/8 ohms	500/1.0 kΩ/2.0 kΩ/8 ohms	200/400/800/8 ohms
Specification	5.25" 2-way Hi-Fi in-ceiling speaker	5.25" 2-way Hi-Fi in-wall speaker	Double 5.25" 2-way Hi-Fi in-wall speaker
Type	In-Ceiling Speaker	In-Wall Speaker	In-Wall Speaker
Frequency Response	65Hz-20KHz	65Hz-20KHz	70Hz-20KHz
RMS Power	40 W	40 W	50 W
Impedance	8 ohms	8 ohms	8 ohms
Sensitivity (1w/1m)	86 dB	86 dB	90 dB
Woofers	5.25" kevlar woven cone	5.25" kevlar woven cone	Double 5.25" kevlar woven cone
Tweeter	0.76" silk dome, pivoting	0.76" silk dome, pivoting	0.76" silk dome, pivoting
Tweeter Equalizer	+2dB/-2dB	+2dB/-2dB	+2dB/-2dB
Enclosure Material	ABS	ABS	ABS
Grill Material	Steel	Steel	Steel
Cutout Dimensions	Ø 180 mm	252 x 152mm	384 x 155mm
Over Dimensions	Ø 218 x 88 mm	290 x 190 x 84 mm	Depth with 1/2" drywall: 75mm, Overall Dimensions: 425 x 197 x 80mm

HiFi In-Ceiling/In-Wall Speaker

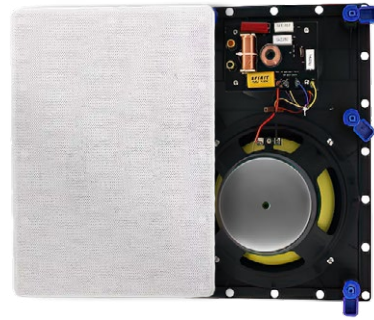
HC 632 | 2-Way HiFi In-Ceiling Speaker

HC 633 | 2-Way HiFi In-Wall Speaker

Introducing the HC Series HiFi 6inch, a pinnacle in our HiFi In-Ceiling/In-Wall Speaker category. This series/model name signifies a meticulous blend of high-fidelity sound and seamless integration, setting a new standard for audio excellence. Immerse yourself in a refined auditory experience with this speaker discreetly nestled in your ceiling or wall. Elevate your home audio setup with the HC Series HiFi 6inch, where sophisticated design meets uncompromising sound quality, delivering an immersive listening experience that redefines expectations in the HiFi In-Ceiling/In-Wall Speaker category.



HC 632



HC 633

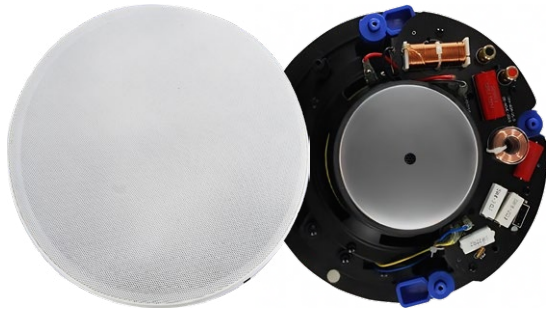
	HC 632	HC 633
Rated Input	30W-15W-7.5 100V/8Ω	30W-15W-7.5W 100V/8Ω
Impedance	333/666/1.33 kΩ /8 ohms	333/666/1.33 kΩ /8 ohms
Specification	6.5" 2-way Hi-Fi in-ceiling speaker	6.5" 2-way Hi-Fi in-wall speaker
Type	In-Ceiling Speaker	In-Wall Speaker
Frequency Response	60Hz-20KHz	60Hz-20KHz
RMS Power	60 W	60 W
Impedance	8 ohms	8 ohms
Sensitivity (1w/1m)	88 dB	88 dB
Woofer	6.5" kevlar woven cone	6.5" kevlar woven cone
Tweeter	0.76" silk dome, pivoting	0.76" silk dome, pivoting
Tweeter Equalizer	+2dB/-2dB	+2dB/-2dB
Enclosure Material	ABS	ABS
Grill Material	Steel	Steel
Cutout Dimensions	Ø 208 mm	282 x 182mm
Over Dimensions	Ø248 x 97mm	323 x 223 x 88 mm

HiFi In-Ceiling/In-Wall Speaker

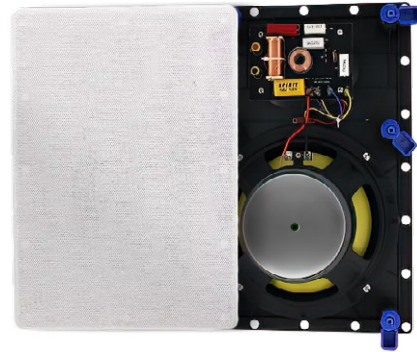
HC 852 | 2-Way HiFi In-Ceiling Speaker

HC 853 | 2-Way HiFi In-Wall Speaker

Introducing the HC Series HiFi 8inch, the epitome of audio excellence in our HiFi In-Ceiling/In-Wall Speaker category. This series/model name represents an impeccable fusion of high-fidelity sound and seamless integration, setting a new benchmark for superior audio quality. Immerse yourself in a refined auditory experience, discreetly embedded in your ceiling or wall. Elevate your home audio setup with the HC Series HiFi 8inch, where sophisticated design harmonizes with uncompromising sound, delivering an immersive listening encounter that redefines expectations in the HiFi In-Ceiling/In-Wall Speaker category.



HC 852



HC 853

	HC 852	HC 853
Rated Input	50W-25W-12.5W 100V/8Ω	50W-25W-12.5W 100V/8Ω
Impedance	200/400/800/8 ohms	200/400/800/8 ohms
Specification	8" 2-way Hi-Fi in-ceiling speaker	8" 2-way Hi-Fi in-wall speaker
Type	In-Ceiling Speaker	In-Wall Speaker
Frequency Response	45Hz-20KHz	45Hz-20KHz
RMS Power	80 W	80 W
Impedance	8 ohms	8 ohms
Sensitivity (1w/1m)	88 dB	88 dB
Woofer	8" kevlar woven cone	8" kevlar woven cone
Tweeter	0.76" silk dome, pivoting	0.76" silk dome, pivoting
Tweeter Equalizer	+2dB/-2dB	+2dB/-2dB
Enclosure Material	ABS	ABS
Grill Material	Steel	Steel
Cutout Dimensions	Ø 248 mm	322 x 222 mm
Over Dimensions	Ø286 x 108 mm	363 x 263 x 108 mm



Foreground Music Speakers

Elevate your audio ambiance with Foreground Music Speakers. Purposefully designed for clarity and presence, these speakers deliver exceptional sound quality, making them the ideal choice for foreground music and immersive experiences.

HB 105B | 5" Single Point Source Coaxial Speaker
HB 105W | 5" Single Point Source Coaxial Speaker

The HB 105 Single Point Source Coaxial Speaker is a versatile and high-performance audio solution designed for various professional applications such as business conferences, broadcast systems, educational facilities, fitness clubs, auditoriums, cafes, performance halls, and multifunctional venues. This speaker is equipped with a 5-inch coaxial driver, delivering clear and balanced sound with a power rating of 100W RMS and a peak power of 200W. With a frequency response of 70Hz-20KHz and a sensitivity of 94dB, it ensures excellent sound reproduction. The robust construction features high-density plywood and multiple mounting points for flexible installation.



HB 105B



HB 105W

HB 105B / HB 105W

Low Frequency Driver	1x5" (31mm, 85 magnet, 15mm tweeter neodymium magnet) coaxial driver
Power Handling	100W (RMS), 200W (PEAK)
Frequency Response	70Hz-20KHz (±3dB)
Sensitivity	94dB / 1W / 1M
Maximum SPL	106dB (RMS), 112dB (PEAK)
Nominal Impedance	8Ω
Mounting Hardware	6 x M8 screw mounting points (with dedicated hanging hardware)
Connectors	Terminal connectors
Enclosure Material	CNC-made, high-density plywood
Weight	2.2 kg
Dimensions (W x D x H)	160 x 160 x 170 mm

Foreground Music Speakers

FG 421W | 2-Way Foreground Music Speaker

FG 531W | 2-Way Foreground Music Speaker

FG 641W | 2-Way Foreground Music Speaker

The FG Series presents a remarkable 2-Way Foreground Music Speaker, meticulously crafted for applications demanding superior audio quality and precise sound projection. Ideally suited for dynamic environments like hypermarkets, exhibition centers, and sports complexes, this speaker boasts a 120 mm dynamic full-range transducer for rich low frequencies and a 25 mm dome tweeter for crisp high frequencies. Versatility is key, and the FG Series offers flexible mounting options, including surface mounting. With three distinct models to choose from, the FG Series ensures a tailored audio solution to elevate your auditory experience in various settings.



FG 421W



FG 531W



FG 641W

	FG 421W	FG 531W	FG 641W
Rated Input	100 V : 20 W (20 - 10 - 5 - 2.5W) / 8 Ω	100 V : 30 W (30 - 15 - 7.5 - 3.75 W) / 8 Ω	100 V : 40 W (40 - 20 - 10 - 5 W) / 8 Ω
Impedance	500/1.0 kΩ/2.0 kΩ/4.0 kΩ /8 ohms	333/666/1.33 kΩ/2.66 kΩ /8 ohms	250/500/1.0 kΩ/2.0 kΩ /8 ohms
Maximum Power	40 W	60 W	80 W
Frequency Response	75Hz - 20KHz	55 Hz - 20 kHz	45Hz-20KHz
Sensitivity 1W @ 1m	88dB	90dB	92dB
Coverage Angle (1kHz, -6dB)	90 x 90°	90 x 90°	90 x 90°
Speaker Component	Woofer: 4" (103mm)	Woofer: 5.25" (135mm)	Woofer: 6.5" (166mm)
Tweeter	Tweeter: 1" (25mm) Silk dome	Tweeter: 1" (25mm) Silk dome	Tweeter: 1" (25mm) Silk dome
Safety	IEC-62368-1:2018	IEC-62368-1:2018	IEC-62368-1:2018
Dust & Water Protection	IP65 (acc. to IEC 529)	IP65 (acc. to IEC 529)	IP65 (acc. to IEC 529)
Material & Finish	Enclosure: ABS, white Grille: Aluminium Treated Mesh, white Bracket: Aluminium Bracket, white	Enclosure: ABS, white Grille: Aluminium Treated Mesh, white Bracket: Aluminium Bracket, white	Enclosure: ABS, white Grille: Aluminium Treated Mesh, white Bracket: Aluminium Bracket, white
Dimensions	170 x 228 x 140 mm (W x H x D)	185 x 255 x 180 mm (W x H x D)	216 x 285 x 205 mm (W x H x D)
Weight	2.3 kg	2.8 kg	3.3 kg

Foreground Music Speakers





PRIME series

Experience superior audio aesthetics with our Premium Surface-Mounted Speakers. Meticulously designed for both style and performance, these speakers deliver premium sound quality while seamlessly complementing your space.

HD 420W | Premium AV Surface-Mounted Loudspeaker**HD 530W | Premium AV Surface-Mounted Loudspeaker****HD 640W | Premium AV Surface-Mounted Loudspeaker**

Discover sonic luxury with our Premium Surface-Mounted Speakers category, featuring the HD Series Premium AV Surface-Mounted Loudspeaker. This series/model name signifies the pinnacle of audio and visual excellence, offering a harmonious blend of premium design, superior sound quality, and advanced cross-over circuit technology. Immerse yourself in a heightened auditory and visual experience, where sleek aesthetics meet uncompromising performance. Elevate your audio setup with the HD Series, setting a new standard for premium surface-mounted speakers that redefine expectations in the Premium Surface-Mounted Speakers category.



HD 420W

HD 530W

HD 640W

	HD 420W	HD 530W	HD 640W
Impedance	100V: 20W-10W-5W-2.5W & 8 ohms	100V: 30W-15W-7.5W-3.25W & 8ohms	100V: 40W-20W-10W-5W & 8ohms
Woofers	4" (103mm)	5.25" (135mm)	6.5" (165mm)
Tweeter	0.5" (13mm) Mylar dome	0.5" (13mm) Mylar dome	0.5" (13mm) Mylar dome
Sensitivity (1w/1m)	90dB	91dB	91dB
Frequency Response	90Hz-20KHz	80Hz-20KHz	80Hz-20KHz
Power (RMS)	20W	30W	40W
Switch Transformer	20W-10W-5W-2.5W /100V/8Ω	30W-15W-7.5W-3.75W /100V/8Ω	40W-20W-10W-5W/100V/8Ω
Color	White	White	White
Material & Finish	ABS + Aluminum	ABS + Aluminum	ABS + Aluminum
Dimension	135 x 180 x 218 mm (W x D x H)	170 x 210 x 260 mm (W x D x H)	206 x 250 x 300 mm (W x D x H)

PRIME series

HD 641W | Premium AV Surface-Mounted Loudspeaker

HD 851W | Premium AV Surface-Mounted Loudspeaker

Experience audio opulence with the HD Series Premium AV Surface-Mounted Loudspeaker, the crown jewel of our Premium Surface-Mounted Speakers category. Showcasing a harmonious fusion of sleek aesthetics and uncompromising performance, the HD Series immerses you in a heightened auditory experience. Its 1" (25mm) silk dome tweeter delivers pristine high frequency reproduction, complemented by the precision and power of its low frequency driver. Together, these components produce expansive, crystal clear audio that will elevate your listening experience. When only the best will do, trust the HD Series to redefine expectations with its exceptional blend of premium design and superior sound.



HD 641W

HD 851W

	HD 641W	HD 851W
Impedance	100V: 40W-20W-10W-5W & 8ohms	100V: 50W-25W-12.5W-6.25W & 8ohms
Woofers	6.5" (166mm)	8" (203mm)
Tweeter	1" (25mm) silk dome	1" (25mm) silk dome
Sensitivity (1w/1m)	92dB	92dB
Frequency Response	60Hz-20KHz	65Hz-20KHz
Power (RMS)	40W	60W
Switch Transformer	40W-20W-10W-5W/100V/8Ω	50W-25W-12.5W-6.25W/100V/8Ω
Color	White	White
Material & Finish	ABS + Aluminum	ABS + Aluminum
Dimension	218 x 263 x 330 mm (W x D x H)	270 x 338 x 428 mm (W x D x H)





Music Horn Speaker

Amplify your outdoor audio experience with our Music Horn Speaker. Designed for powerful projection, these speakers deliver clear, dynamic sound, making them the perfect choice for open spaces and outdoor events.



MH 60 | Music Horn Speaker

Elevate your outdoor audio experience with our Music Horn Speaker category, delivering powerful sound projection. Whether for public announcements or large events, this series promises unparalleled clarity and reach. Immerse yourself in dynamic and impactful audio that resonates across open spaces. Elevate your events or gatherings with the Music Horn Speaker series, setting a new standard for outdoor audio solutions that prioritize both power and precision in the Music Horn Speaker category.



MH 60

Load Rating	100V : 60W (60-30-15-7.5W) / 8ohm
Impedance	166/333/666/1.33 kΩ / 8 ohms
Sensitivity	97dB(1W/1m)
Frequency Range	200Hz-20KHz
Power Selection	Terminal Block
Ingress Protected	IEC529 @ IP66
Horn Materials	ABS
LF Driver Materials LF	6.5 inch cone Speaker
HF Driver Materials HF	1 inch dome tweeter
Mounting Bracket	3- Ø10mm holes with 60mm (2.36 inch) space
Dimension	370 x 270 x 305 mm (W x H x D)

Music Horn Speaker

MH 200 | 200W Music Horn Speaker

The MH 200 is a 12-inch coaxial dual-frequency all-weather speaker designed for a variety of indoor and outdoor environments, such as schools, stations, shopping malls, parks, and stadiums. Built with an engineering plastic injection molding housing, it meets IP65 standards, ensuring it can withstand all weather conditions. The speaker incorporates a medium-low sound speaker and a treble driver in a coaxial configuration with a horn design, offering excellent voice and music playback. Its simple and convenient installation, combined with a constant resistance design, diverse usage scenarios, and compliance with CE and IP65 standards, make the MH 200 an ideal choice for delivering clear and reliable sound performance in any setting.



MH 200

Input Power	OFF-50W-100W-200W-8Ω (100V)
Nominal Impedance	OFF-1600-800-400-80
Sensitivity	Sensitivity 1W @ 1m: 92/105dB
Coverage Angle	(1kHz, -6dB): 180°
Frequency Response	60Hz to 20k Hz
Loudspeaker Unit	Bass 12" x 1, Treble 1" x 1
Mounting Hole Size	3 x Ø10 mm, Distance between holes: 100mm
Mounting Method	Set Swinging
Connection Type	4-bit wiring terminals
Materials	Shell (PP+ barium), Mesh cover (Aluminum)
Size	410 x 410 x 443mm
Weight	20 kg/1PC
Operational Temperature	-25°C to +55°C
Storage Temperature	-40°C to +70°C
Relative Humidity	<=95%

Music Horn Speaker





Website | avl.aexsystem.com
Email | sales@aexsystem.com



In line with our continuous product improvement policy, AEX System retains the right to alter specifications, features, and artwork without prior notification. While we made every effort to ensure the accuracy of the information in this Product Overview when printed, minor errors may have been inadvertently included. If you have any doubts, please do not hesitate to contact us for clarification.